

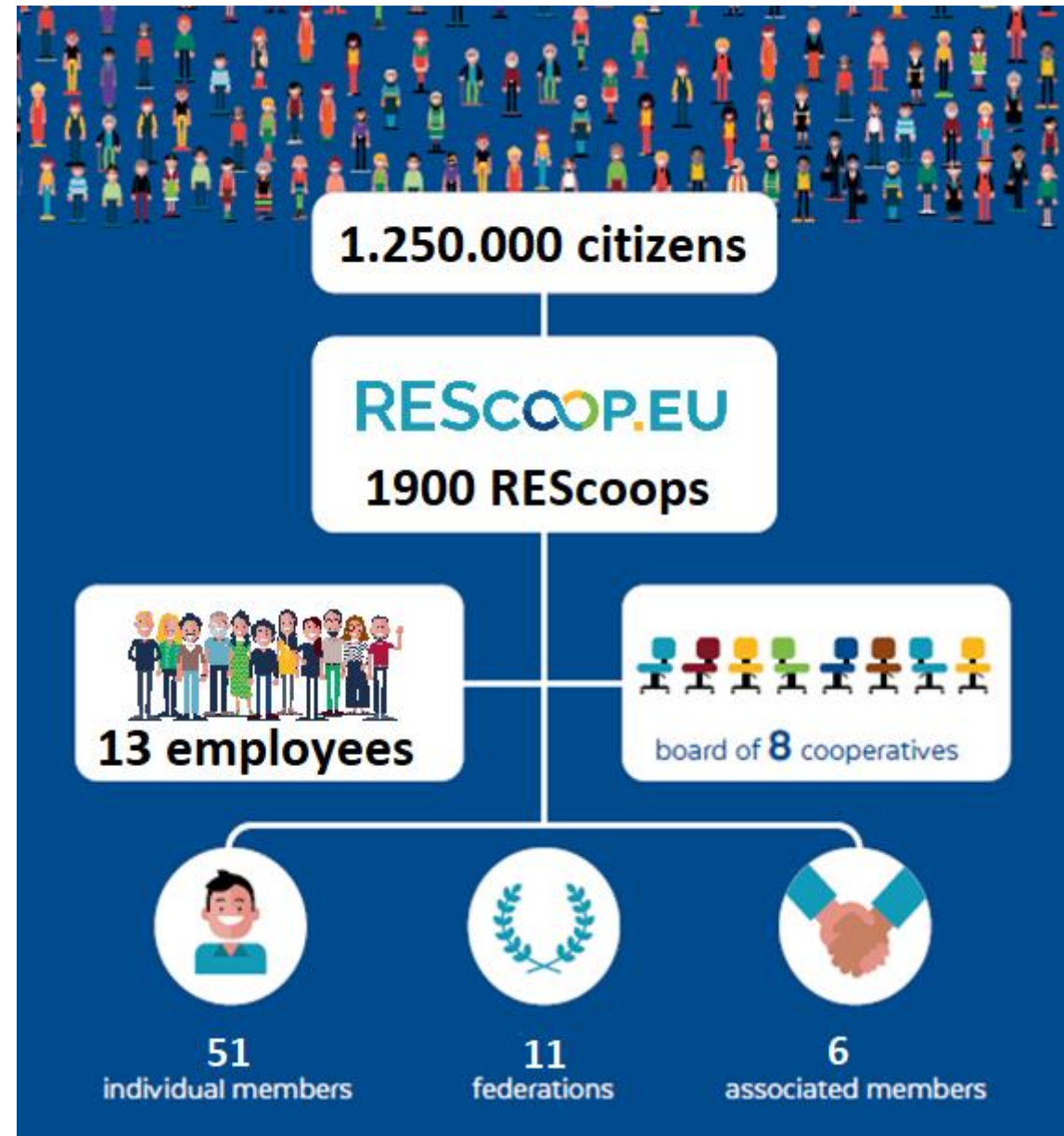
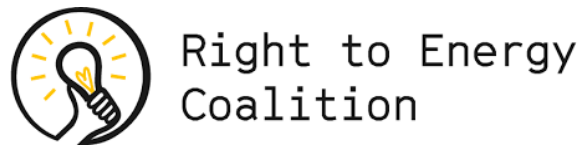
# Drivers for success in community renewable energy

Energy Community Secretariat – Renewable Energy Coordination Group

Josh Roberts, Senior Policy Advisor – REScoop.eu

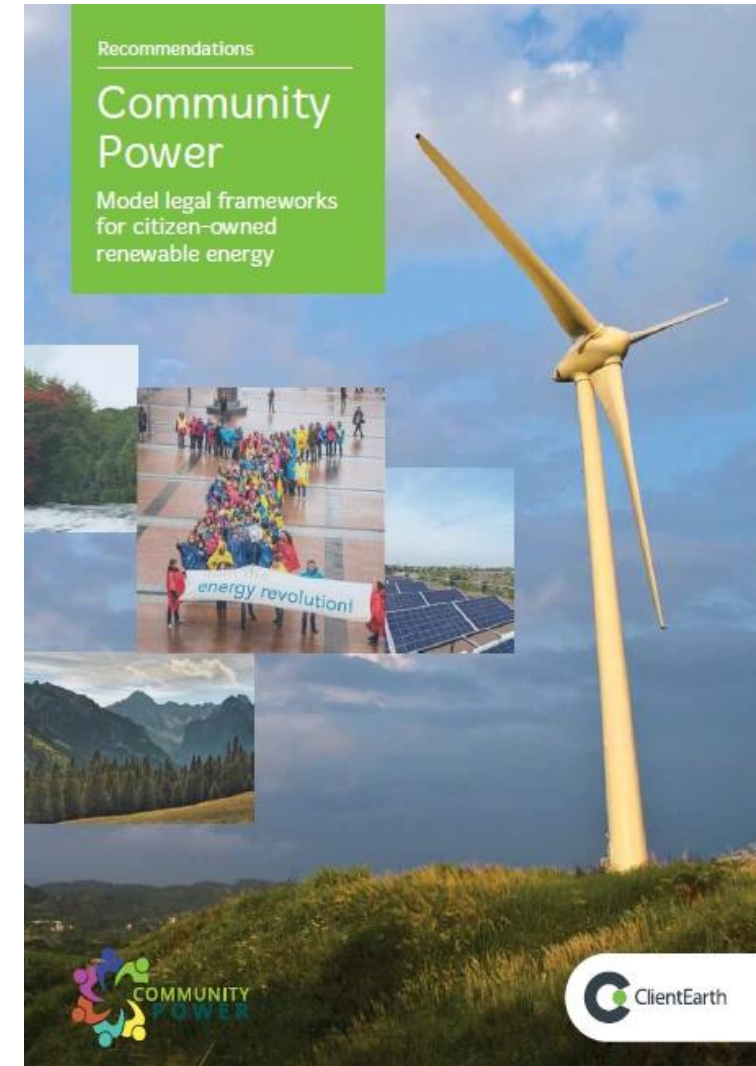
09/12/2021

# What is REScoop.eu?



# 'Model Legal Frameworks for Citizen-owned Renewable Energy'

- Report intended to identify national best practices for supporting community energy
- ClientEarth carried out research and analysis of law and policy in Germany, Denmark, Spain and the UK
- Contains recommendations for creating a legal framework that enables community energy at national level



# Strategic Planning

Community energy needs a framework

- **Strategy** – government commitment to identify and address specific challenges
- Government **support** and **communication**/dialogue
- **Buy-in/participation** by other government institutions and stakeholders
- High level **policy objectives** at national/or local level (installed capacity, local ownership objectives)
- **Define** what is meant by community energy



# Incentives to invest

## Operational support

- Financial support once a project is operational (E.g. Feed-in-tariffs, green certificates or premiums)
- Most successful have been ones that were simple and understandable

Best examples: UK (< 5MW), DK, DE, BE

An example from the US: Renewables portfolio standards that include a community energy component

## Investment support

- Assistance for pre-construction activities (e.g. feasibility studies, planning, grid connection, consultancy/legal fees, etc)

Best examples: Scotland's CARES Scheme, Danish scheme

- **For participants:** Special tax treatment to incentivise investment by citizens

Best examples:

- Netherlands' Postcoderos
- UKSEIS scheme
- Local tax incentives in Spain

# Grids & local administrative support

## Grid connection

- Bike-lane for obtaining a grid connection
- Grid connection fees that are simple and not over-burdensome (e.g. shallow vs deep connection cost)
- Incentives to manage connection to limit impact on grid/provide services
- Local grid plan to help provide clarity and transparency

## Local planning and assistance

- Urban planning (e.g. building ordinances that require RES/EE integration in new and renovated buildings)
- Guidance/tools for citizens (e.g. online solar/heat maps) and one-stop-shops
- Allocating public spaces for community RES projects (public procurement criteria)



# Addressing regulatory barriers

- Simplifying regulatory burdens of becoming a supplier or generator
  - Examples: Bike lane for procedures, Reducing costs, guarantee requirements
- License exemptions for local supply
- License light for retail supply



# Promoting Inclusiveness

- Integrating the objective of tackling energy poverty into the concept of community (e.g. Greece)
- Financing programmes to help low-income households invest (e.g. on-bill finance)
- Requirements vs incentives for project developers
- Allowing for organization of citizens living in social housing (e.g. 'tenants' democracy' in Denmark)
- Reduced requirements for participation for target groups (buy-in, representation)





# Relating best practice to the EU legal framework for RECs

- 1) **First:** Member States must assess potential, and existing barriers
  
- 2) **Second.** Member States must create an enabling framework, which should:
  - Address unjustified regulatory and administrative barriers
  - Ensure proportionate and non-discriminatory treatment
  - Tools to access finance and technical expertise (coupled with new informational rights)
  - Regulatory capacity building for local authorities
  - Promote inclusion of vulnerable/low-income households, tenants
  - Should utilize single contact points for renewables

# Recommendations

- 1) Identify and model/assess potential, and existing barriers
- 2) Assessments should be inclusive and transparent
- 3) Set objectives and develop a strategy, i.e. an enabling framework
- 4) Enabling frameworks should go hand-in-hand with one-stop-shops and adequate design of support schemes for RECs
- 5) Strategy implementation needs to be monitored over time to integrate lessons and ensure transparency

# Useful resources

- Transposition Guidance (REScoop.eu, ClientEarth): <https://www.rescoop.eu/news-and-events/press/energy-communities-under-the-clean-energy-package>
- Community Power: Model legal frameworks for citizen-owned energy (ClientEarth): [https://www.communitypower.eu/images/Clientearth\\_report.pdf](https://www.communitypower.eu/images/Clientearth_report.pdf)
- Transposition Tracker (REScoop.eu): <https://www.rescoop.eu/policy#transposition-tracker>
- Potential for energy citizens in the EU (CE Delft): <https://cedelft.eu/publications/the-potential-of-energy-citizens-in-the-european-union/>
- Assessment report of potentials for RES community energy in the target regions (Come RES): <https://come-res.eu/resource?t=Assessment%20report%20of%20potentials%20for%20RES%20community%20energy%20in%20the%20target%20regions>
- Community Renewable Electricity Generation – Potential Sector Growth to 2020 (Department of Energy and Climate Change, UK): [https://assets.publishing.service.gov.uk/government/uploads/system/uploads/attachment\\_data/file/274746/20140108\\_Community\\_Energy\\_Modelling\\_FinalReportJan.pdf](https://assets.publishing.service.gov.uk/government/uploads/system/uploads/attachment_data/file/274746/20140108_Community_Energy_Modelling_FinalReportJan.pdf)
- Community Energy Strategy: Full Report (DECC, UK): [https://assets.publishing.service.gov.uk/government/uploads/system/uploads/attachment\\_data/file/275163/20140126Community\\_Energy\\_Strategy.pdf](https://assets.publishing.service.gov.uk/government/uploads/system/uploads/attachment_data/file/275163/20140126Community_Energy_Strategy.pdf)
- Roadmap for citizen renewable energy in France (Ministere de la Transition Ecologic): <https://www.ecologie.gouv.fr/10-mesures-developpement-des-energies-renouvelables-citoyennes>
- Barriers to renewable energy communities and opportunities in Hungary (Hnuti Duha, EMLA): [https://mtvsz.hu/uploads/files/Megujuloenergia-kozossegek\\_Ertekelo\\_tanulmany\\_MTVSZ-SZGK-EMLA\\_final.pdf](https://mtvsz.hu/uploads/files/Megujuloenergia-kozossegek_Ertekelo_tanulmany_MTVSZ-SZGK-EMLA_final.pdf)
- The local economic impact of citizen projects (Energie Partagee): <https://energie-partagee.org/ressource/etude-retombees-eco-2/>

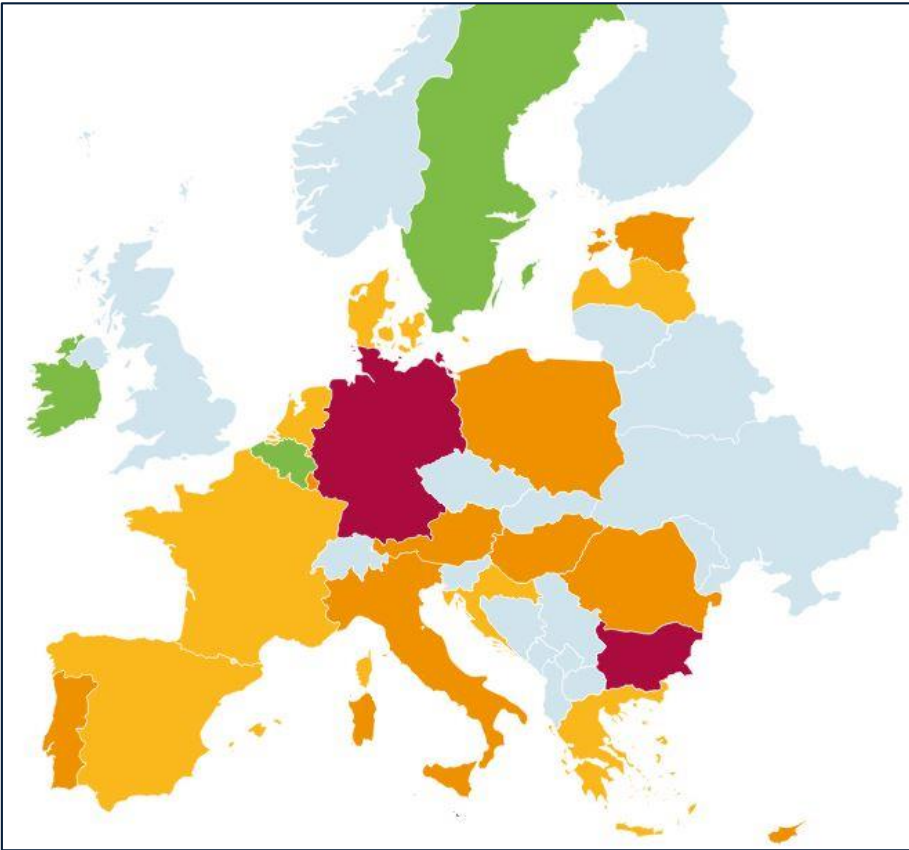
# REScoop.eu follows the transposition of the clean energy package's provisions on energy communities

REScoop.EU ClientEarth

**Energy Communities under the Clean Energy Package**

Transposition Guidance

Transposition tracker – energy community definitions



# REScoop.EU

[www.rescoop.eu](http://www.rescoop.eu)

*If you want to know more, please contact us!*

[josh.roberts@rescoop.eu](mailto:josh.roberts@rescoop.eu)

 [@rescoop.eu](https://www.facebook.com/rescoop.eu)

 [REScoopVideos](https://www.youtube.com/REScoopVideos)

 [rescoop.eu](https://www.instagram.com/rescoop.eu)

 [@REScoop.eu](https://twitter.com/REScoop.eu)

 [REScoop.eu](https://www.linkedin.com/company/REScoop.eu)

