

The background is a satellite-style image of Europe at night, with city lights visible. Overlaid on this is a complex network of glowing blue lines that connect various points across the continent, symbolizing a network or infrastructure.

REMIT investigation coordination by ECRB

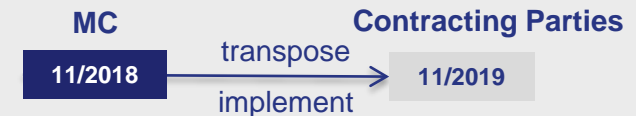
REMIT “light”



Geographic scope - Contracting Parties



- **Applicable** provisions
 - Transparency requirements
 - prohibition of market abuse
 - registration of market participants with regulators
 - investigatory and enforcement powers to regulators (incl. penalty regime)
- **No central** data collection and market surveillance of ACER_[at this stage]
 - ECRB to cover coordination of investigations instead



Article 16

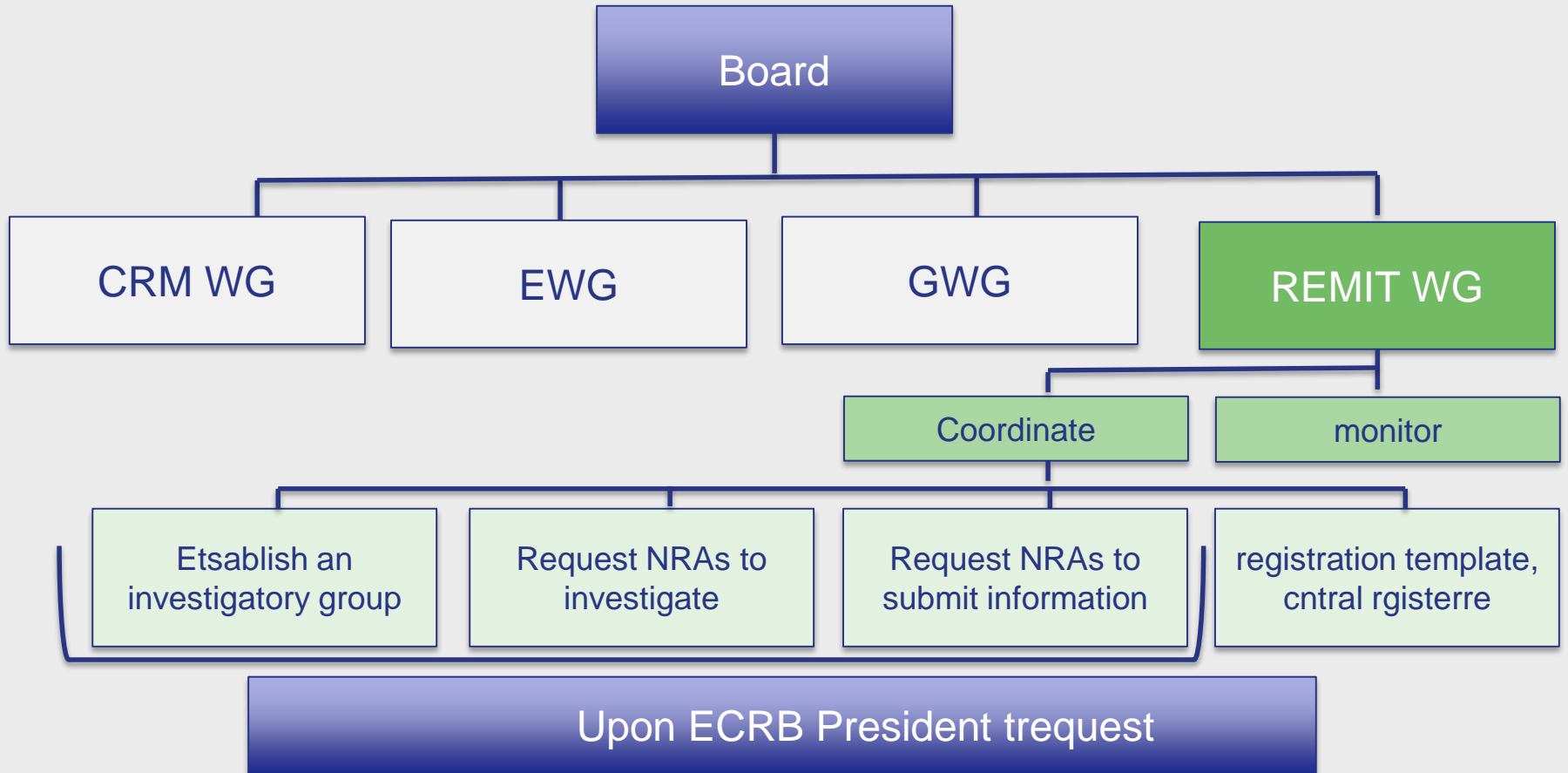
Cooperation at ~~Union~~Energy Community and national level


1. The ~~Agency~~Energy Community Regulatory Board shall ~~aim to ensure~~facilitate that national regulatory authorities carry out their tasks under this Regulation in a coordinated and consistent way.

~~The Agency shall publish non-binding guidance on the application of the definitions set out in Article 2, as appropriate.~~

4. In order to carry out its functions under paragraph 1, where, inter alia, on the basis of initial assessments or analysis, the Energy Community Regulatory Board~~Agency~~ suspects that there has been a breach of this Regulation, it shall ~~have the power~~be entitled:

- (a) to request one or more national regulatory authorities to supply any information related to the suspected breach;
- (b) to request one or more national regulatory authorities to commence an investigation of the suspected breach, and to take appropriate action to remedy any breach found. Any decision as regards the appropriate action to be taken to remedy any breach found shall be the responsibility of the national regulatory authority concerned;
- (c) where it considers that the possible breach has, or has had, a cross-border impact, to establish and coordinate an investigatory group consisting of representatives of concerned national regulatory authorities to investigate whether this Regulation has been breached and in which ~~Member State~~Contracting Party the breach took place. Where appropriate, the Agency~~ECRB~~ may also ~~request~~seek the participation of representatives of ACER~~the competent financial authority~~ or other relevant authority of one or more Contracting Party and/or Member States in the investigatory group.



The background of the slide is a satellite-style image of Europe at night, with city lights visible. Overlaid on this is a complex network of glowing blue lines that connect various points across the continent, representing a network or infrastructure. The lines are bright and have a slight glow, creating a sense of connectivity and energy flow.

Thank you very much
for your attention!