



Introducing PRISMA European Capacity Platform

Background of the company and current developments

Allocation of Gas Transmission Capacities in the Energy Community

Workshop 14 March 2016, Vienna

Agenda

I. Background and status of the company

II. PRISMA governance

III. Development of the PRISMA Platform

PRISMA in numbers

Usability project

Shipper services

Agenda

I. Background and status of PRISMA

The joint PRISMA platform was built on the experience of all its participating TSOs

The involved TSOs reached significant synergy effects

Significantly reduced the overhead costs for all involved TSOs.

Created easy access to a high number of markets for the European gas traders.

Created a best practice for TSOs.

Helped in the creation of a transparent European gas market.



PRISMA platform's evolution

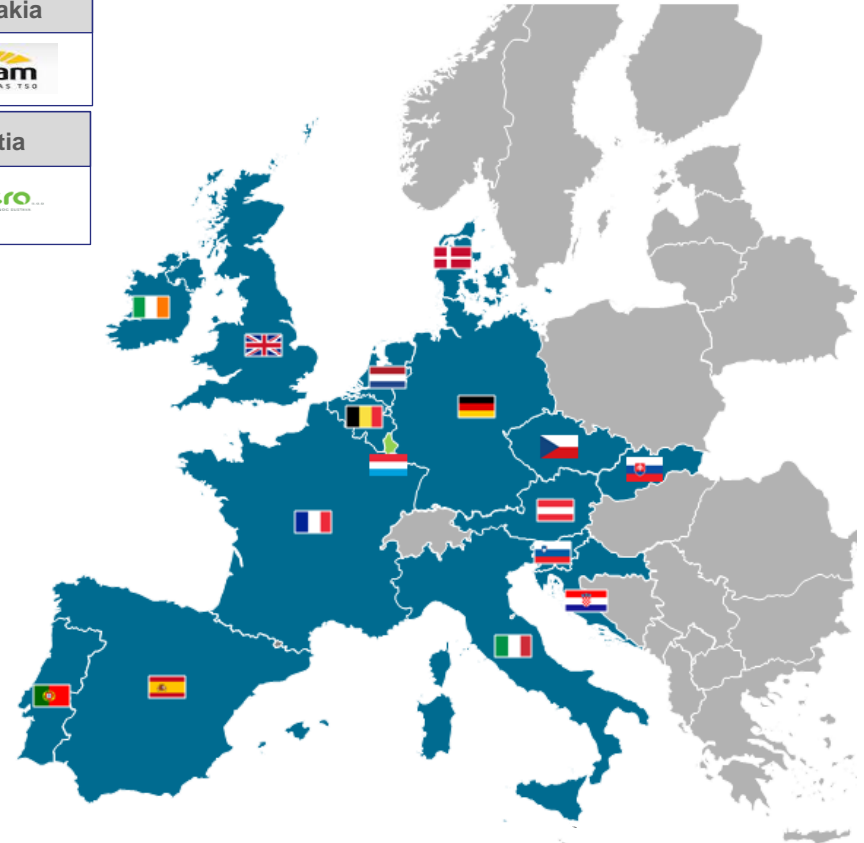
1 April 2013 Early CAM	1 October 2013 Platform Upgrade	1 January 2014 Secondary Trading	1 October 2014 Platform Upgrade	1 October 2015 Full CAM implementation	Q1 2016 Platform redesign
Go-live of the European PRISMA platform	Reverse Auctions	Integration of secondary marketing	Multi-currency	Within-day auctions	New information architecture
Auctioning of primary capacity	Asynchronous FCFS bookings & special contracting services	Trader lists, anonymous trading	Extension of comfort bidding	Bid roll-over	Update of visual design
FCFS booking	Automated FCFS booking Confirmation	Different trading procedures (CFO, FCFS, OTC)	More transparent competition information	Extension of automated shipper connection	Reporting functionality
Surrender of capacity	Usability improvements				

PRISMA connects 16 countries

■ Current PRISMA shareholders / customers

■ PRISMA project TSOs

 Austria	 Belgium	 France	 Slovakia
 	 	 	
 Germany	 Denmark	 Italy	 Croatia
    <p>Wir transportieren Gas.</p>  			
 Ireland		 Portugal	
  	 Netherlands	 Spain	
	 Slovenia	 Czech Republic	
		 UK	 Luxemburg
   			
	 		



Agenda

II. PRISMA governance

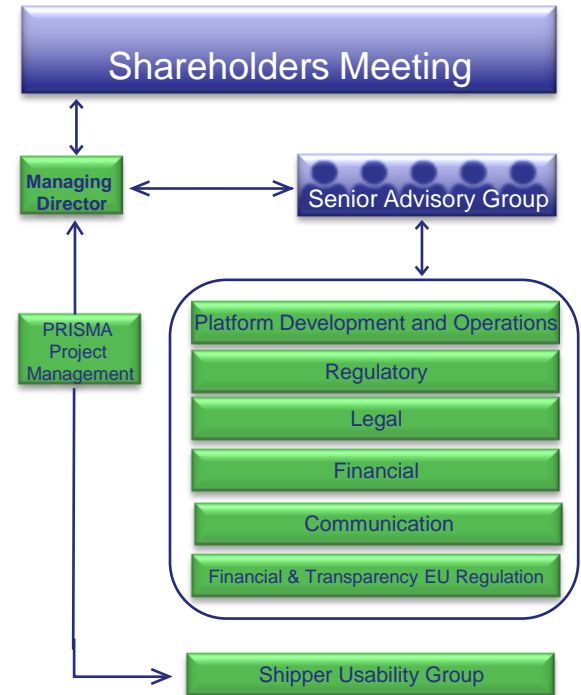
PRISMA , an open cooperation which allows all European TSOs to become shareholders

- **PRISMA: A company open to new TSOs for an integrated European capacity market.**
- The PRISMA shares are distributed in accordance with the **ENTSOG voting rights**.
- By using the ENTSOG voting rights, PRISMA ensures that **every shareholder participates** in the decision-making process
- With every new European TSO the **shares are re-allocated using the ENTSOG voting rights**.
- **PRISMA does not have an independent strategy** but is fully built on the strategy and the decisions of its shareholders.

PRISMA's working group structure

The internal governance of the PRISMA is set out in the Articles of Association. Pursuant to this, PRISMA shares are distributed in accordance with the ENTSOG voting rights. By **using the ENTSOG voting rights**, PRISMA ensures that:

- Every shareholder participates in the decision-making process.
- With every new European TSO as new shareholder the shares are re-allocated using the ENTSOG voting rights.
- As an independent company operated by all participating TSOs, PRISMA's contractual structure ensures that all shareholders have a strong vote in PRISMA's decisions.

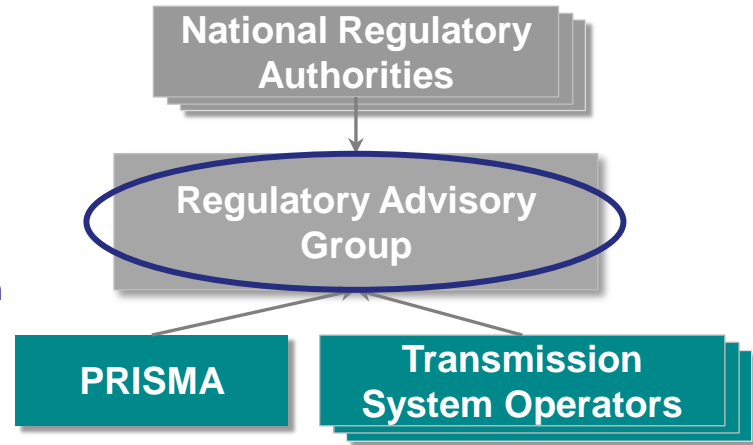


Cooperation with National Regulatory Authorities

The TSOs and National Regulatory Authorities (NRAs) directly involved in PRISMA founded at the beginning of 2014 the Regulatory Advisory Group.

The main tasks of the Regulatory Advisory Group are:

- inform and discuss with NRAs about future developments;
- inform and discuss with NRAs about future changes of General Terms and Conditions of PRISMA;
- discuss open issues related to the allocation of transmission capacity at interconnection points between entry-exit systems that need harmonization of different national regulations;
- receive information from NRAs about developments in EU regulation that could have impact on PRISMA



Agenda

III. Development of the PRISMA Platform

PRISMA in numbers

PRISMA in numbers



+1 800

Users active on the platform



+540

Shipper companies registered on the PRISMA platform



+900 000

Number of successful auctions



+1 500

Network Points connected to the PRISMA platform



37

Transmission System Operators

Allocation experiences

Primary market	Bundling	Secondary market
<p>New functionalities successfully introduced</p> <ul style="list-style-type: none">• Within-day• Reverse auctions•	<ul style="list-style-type: none">• 1.300 bundled network points• >245.000 bundled auctions• Robust algorithm	<ul style="list-style-type: none">• >2.140 secondary trades• Data Reporting Services required as of 7 April 2016

Agenda

III. Development of the PRISMA Platform

Usability project

User involvement is key to success

- Most users experienced the renewed platform as a big change, but easy to learn and easier to work with
- Users considered it to look more user friendly and expect that the new design will let them work more efficiently
- Direct access to frequently used functionality right from the users dashboard

"It's totally different, but after an hour using it you know it."

" Thank you for making our job more easy."

PRISMA FCFs Booking Auctions Network points Secondary Trading Reporting

Dashboard Activity Account settings Platform settings

Welcome René,
TestCompany S.A.

Live and upcoming auctions > See all upcoming auctions

Short term

DAILY Intermittible
Runtime: 29.01.2016 06:00 - 30.01.2016 06:00
Starts in 00:27:29

WITHIN DAY Live
Runtime: 28.01.2016 21:00 - 29.01.2016 06:00
Join now
1 Network points

Long term

MONTHLY Firm
Runtimes: 02.2016 - 03.2016
8 auctions closed
Join now
1 Network points

YEARLY Firm
Runtimes: 2016 - 2017
1 auction closed
Join now

Your network points

ID	Location	Status	Actions
TSO1LoadTest002	TSO 1 (South)	EXIT	Book FCFs
TSO1LoadTest003	TSO 1 (South)	EXIT	Book FCFs
TSO1LoadTest004	TSO 1 (South)	EXIT	Book FCFs
TSO1LoadTest005	TSO 1 (South)	EXIT	Book FCFs
TSO1LoadTest006	TSO 1 (South)	EXIT	Book FCFs

Book FCFs
Create Trade proposal
Show proposals to sell
Show proposals to buy
Place day-ahead comfort bid
Show details

Full transparency on recent activity on the platform

- The activity feed allows users to have a clear overview on the activities performed across their whole company
- Ongoing, successful and unsuccessful activities are clearly highlighted

"good to see what I did today, email doesn't provide good overview"

"aha! Recent activity of company or user? I prefer the company."

The screenshot displays the PRISMA platform interface. The top navigation bar includes 'PRISMA', 'FCFS Booking', 'Auctions', 'Network points', 'Secondary Trading', and 'Reporting'. Below this, there are tabs for 'Dashboard', 'Activity', 'Account settings', and 'Platform settings'. A search bar for 'Find a network point' is visible. The main heading is 'Your company activities in the last 30 days', with a sub-note 'Sorted by latest activity | Sort by product runtime'. On the left, a 'Refine' sidebar allows filtering by 'NETWORK POINT' (with a search box) and 'TYPE' (including Auction, Secondary Trading, FCFS Bookings, Surrendered, and Comfort Bids). The 'ACTIVITY DATE' section has 'From' and 'To' date pickers. The main activity feed lists several items:

- Reverse auction ID 56690045**: Includes 'YOUR BID' (0.001 MWh/h, 0.03 EUR/kWh/h), 'MARKETED' (1 MWh/h), and 'YOUR ALLOCATION' (0.001 MWh/h, 0.05 EUR/kWh/h runtime). Product runtime: 28.01.2016 20:00 - 28.01.2016 22:00. Bid submitted by René Lindner on: 28.01.2016 13:49.
- Booking ID 55246867**: Includes 'YOUR ALLOCATION' (100 MWh/h, 0.02012121 EUR/kWh/d). Product runtime: 01.02.2016 06:00 - 01.03.2016 06:00. Booking created by René Lindner on: 28.01.2016 13:14.
- Proposal ID 16711680**: Includes 'YOUR REQUEST' (0.5 MWh/h, 0.01 EUR/kWh/h/d). Product runtime: 01.04.2016 06:00 - 01.05.2016 06:00. Proposal created by René Lindner on: 27.01.2016 21:29.
- Booking ID 55246849**: Includes 'YOUR ALLOCATION'.

Agenda

III. Development of the PRISMA Platform

Shipper services

Automated Shipper Connection: Benefits for shippers

- Optimized data handling

Automated provision of auction and booking results to support integrated Front-to-Back-Office processes.

- Increased audit compliance

Increased audit compliance due to automated booking confirmations.

- Improvement of data quality

With the interface, shippers can increase their efficiency and eliminate manual input errors.

- Enforcing internal policies

With the automated connection, shippers can set individual trading limits for each of their users in their back-end system.

- Automated participation in a high number of auctions

Automating the trading activities helps mitigating the challenges of the NC CAM day-ahead and within day bidding windows.

Many shippers already use the system

Registration steps:

1. Accept the connection agreement

PRISMA's standardized agreement ensures non-discriminatory access to the offered services.

2. Select the communication solution provider

PRISMA provides a standardized project based approach, amongst others, on the PONTON X/P solution.

3. Technical connection

http(s) connection – ebXML messages – EFET standard.

4. Successful functional Testing

PRISMA provides a full set of test cases to the connecting shippers and full support during the testing process.

5. Go-live

The PRISMA helpdesk support is available for any questions after the go-live.

REMIT reporting service is high on demand

- Shippers are obliged to report their secondary capacity transaction to ACER as of Apr 7, 2016
- PRISMA is offering a service to report such transactions on their behalf
- Currently a large number of shippers are requesting PRISMA's REMIT reporting service
- Possible extensions can allow reporting of additional trades e.g. trades concluded on national points



Thank you very much
for your attention

Dr. Götz Lincke

Managing Director of PRISMA

Agenda

BACK UP

PRISMA platform

- PRISMA is **Europe's leading gas capacity trading platform**. With the **ability to serve a high number of TSO** backend systems, PRISMA provides a single platform through which TSOs and shippers may auction transmission gas capacity at primary and secondary market level respectively.
- There are currently **37 European TSOs from Austria, Belgium, Croatia, Czech Republic, Denmark, France, Germany, Ireland, Italy, Luxembourg, the Netherlands, Portugal, Slovenia, Slovakia, Spain and United Kingdom** connected to the PRISMA platform.



PRISMA'S pillars

Supported by the full ownership of its **24 shareholders** and international workforce, PRISMA benefits from an European wide and profound expertise in European gas markets.



Integration



Transparency



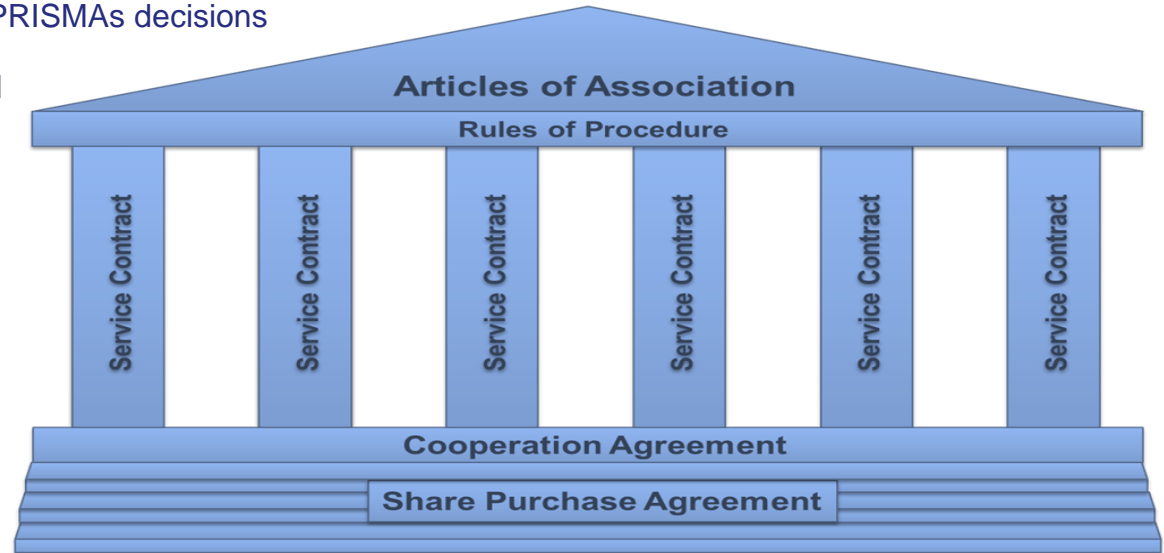
Cooperation

The contractual structure has been created in a way to support the joint strategy of the PRISMA

shareholders

As an independent company operated by all participating TSOs, PRISMA's contractual structure ensures that all shareholders have a strong vote in PRISMA's decisions

- All changes to PRISMA's contractual structure need to be discussed through the PRISMA working groups & decided by the shareholders
- Service contracts, which are concluded between PRISMA and the involved TSOs, are standardised to ensure fair and equal treatment of all partners



The contractual pillars of PRISMA

Agenda

Development of the PRISMA platform

2 years ahead of time

The platform has implemented almost all main European regulatory requirements 2 years before the NC CAM became binding.

Functionalities early implemented:

- ✓ Bundling of capacity in 1-n situations (competition and a-priori)
- ✓ Comfort functions for automated bidding
- ✓ Multi-currency trading
- ✓ Secondary capacity trading (OTC, FCFS, CFO)
- ✓ Surrender of capacity
- ✓ Shipper and user registration on the platform
- ✓ Authorisation level management
- ✓ Network point display and administration
- ✓ TSO automated communication

Product harmonisation and new functionalities as of Oct 2016

- ❑ Introduction of “kWh/d”
- ❑ Within-Day (WID) auctions
- ❑ Display of additional capacity
- ❑ Harmonization (Bundling)
- ❑ Changes to reverse auctions

Zooming in – Within day auctions

- ❑ The uniform-price auction algorithm would be the same as for the Day-Ahead auctions
- ❑ The auctions would be published and started at the same time (same behaviour as the Day-Ahead auctions)

Zooming in – introduction of kWh/d

- ❑ Besides “kWh/h” the platform also supports the flow unit “kWh/d”
- ❑ The decision on the used flow unit is with the TSOs
- ❑ The usage of the flow unit is connected to the network point and can be either “kWh/d” or “kWh/h”
- ❑ TSO already using “kWh/h” will not change to “kWh/d” on short notice
- ❑ Bundling and calculation between the different flow units would not be supported by the PRISMA platform

“With its concept of an open cooperation, PRISMA has already reached significant acceptance and utilisation in the market.”

Status update on REMIT reporting obligation

REMIT reporting obligation

- Being considered as OMP, PRISMA needs to become a RRM and to provide a reporting service for the secondary market
- consequently, PRISMA has shaped a reporting service for shippers

Current status of developments

- PRISMA is about to finalise the registration process as RRM with ACER
- Test phase of REMIT reporting feature has recently started
- Shippers have already started to apply for the reporting service
- Both TSOs and shippers have asked PRISMA to evaluate additional reporting services

PRISMA REMIT Reporting Services

PRISMA conducted a public consultation between 1 - 24 July 2015 to investigate possible services for reporting secondary transactions on behalf of the registered shippers. Based on the feedback and the legal requirements, a REMIT Reporting Service was developed and announced in November 2015.

PRISMA offers services through which the data can be reported in the following combinations:

- to ACER via Edig@as files
- to the shipper via Edig@as files sent by email
- to the shipper via Edig@as files sent via the Automated Shipper Connection
- a combination of the first two solutions
- a combination of the first and third solutions

REMIT reporting service sees a high demand

- Shippers are obliged to report their secondary capacity transactions to ACER as of Apr 7, 2016.
- PRISMA is offering a service to report such transactions on their behalf.
- Currently a large number of shippers are requesting PRISMA's REMIT reporting service.
- Possible extensions can allow reporting of additional trades e.g. trades concluded on national points.
- PRISMA created a dedicated website page for the REMIT services, shippers can find all the necessary information here: <https://corporate.prisma-capacity.eu/remit-reporting/>.

The screenshot shows the PRISMA website's 'REMIT Reporting Service' page. The page has a dark blue header with the PRISMA logo and navigation links: Company, Press, User Info, Legal Information, LHM, and REMIT Service. Below the header, the page title is 'REMIT Reporting Service'. A sub-header reads: 'As an Organised Market Place (OMP) PRISMA offers its registered shippers to report their capacity bookings on the secondary market.' A dark blue 'Contact Us' button is centered. Below this, a paragraph explains that PRISMA offers to compile trade data on behalf of shippers. A list of five reporting options is provided: 1. to ACER via XML files; 2. to the shipper via ACER XML files sent by email; 3. to the shipper via ACER XML files sent via the Automated Shipper Connection; 4. a combination of 1. and 2.; 5. a combination of 1. and 3. Three service packages are listed in colored boxes: 'Service Package A' (dark blue) for 'REMIT reporting as part of PRISMA Automated Shipper Connection' with 'no additional charge'; 'Service Package B' (green) for 'Reporting data sent via PRISMA to ACER and to the shipper' at '125,-EUR p.m.'; and 'Service Package C' (teal) for 'Reporting data sent to one party only' at '100,-EUR p.m.'. Each package has a 'Show more information' link.