

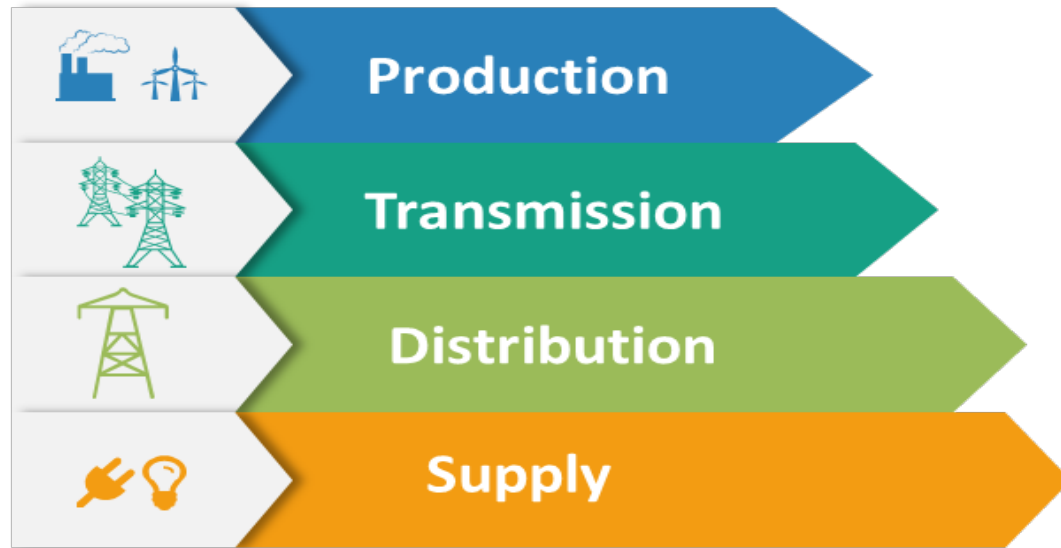


Security of Supply CG- 5th Meeting of Sub-Group for Electricity

KOSOVO

Vienna, 19th December 2018

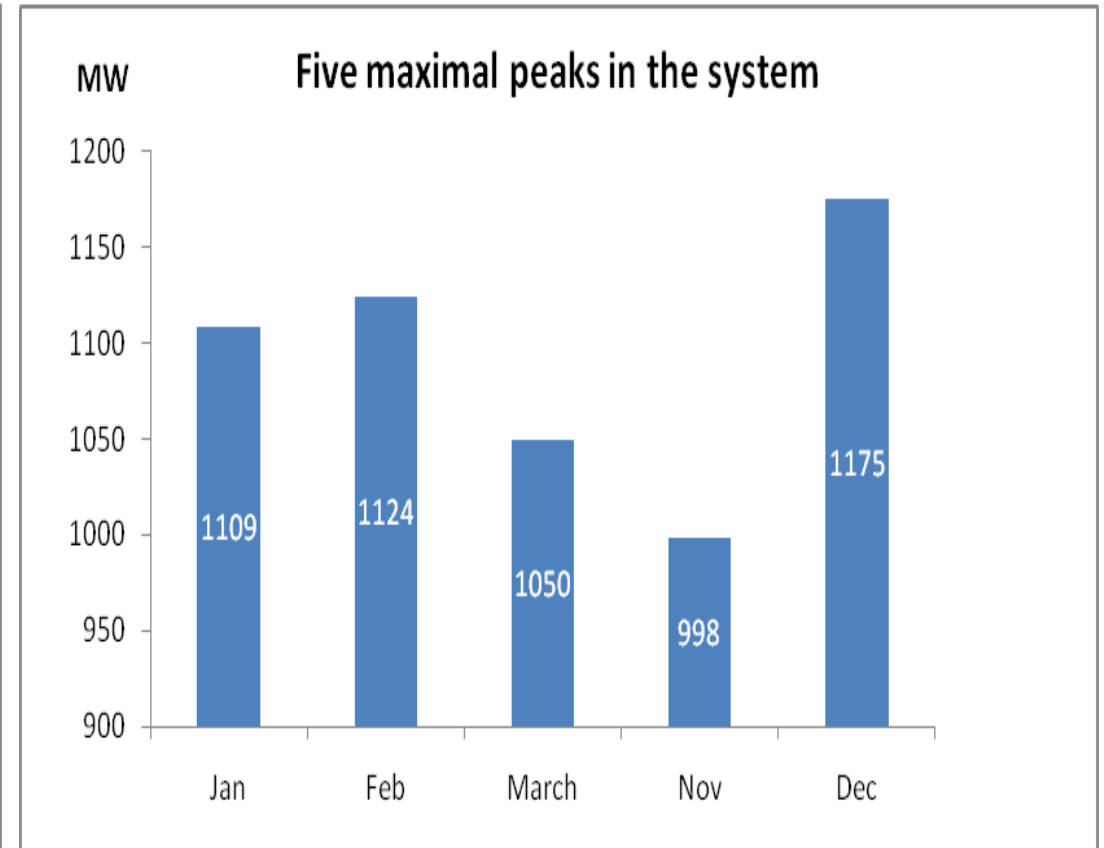
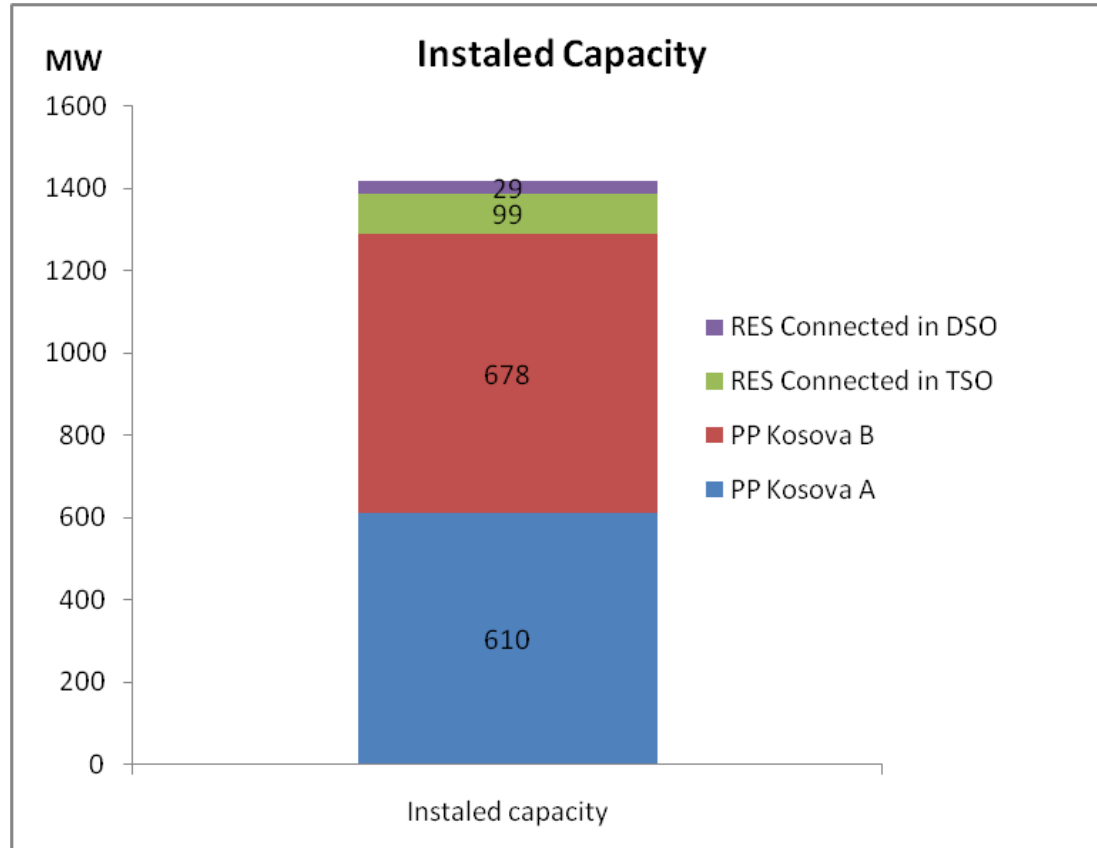
Content



- Coal reserves and generation availability
- TSO operation facts
- DSO energy flows
- Appointment of the Supplier of Last Resort for 3 years

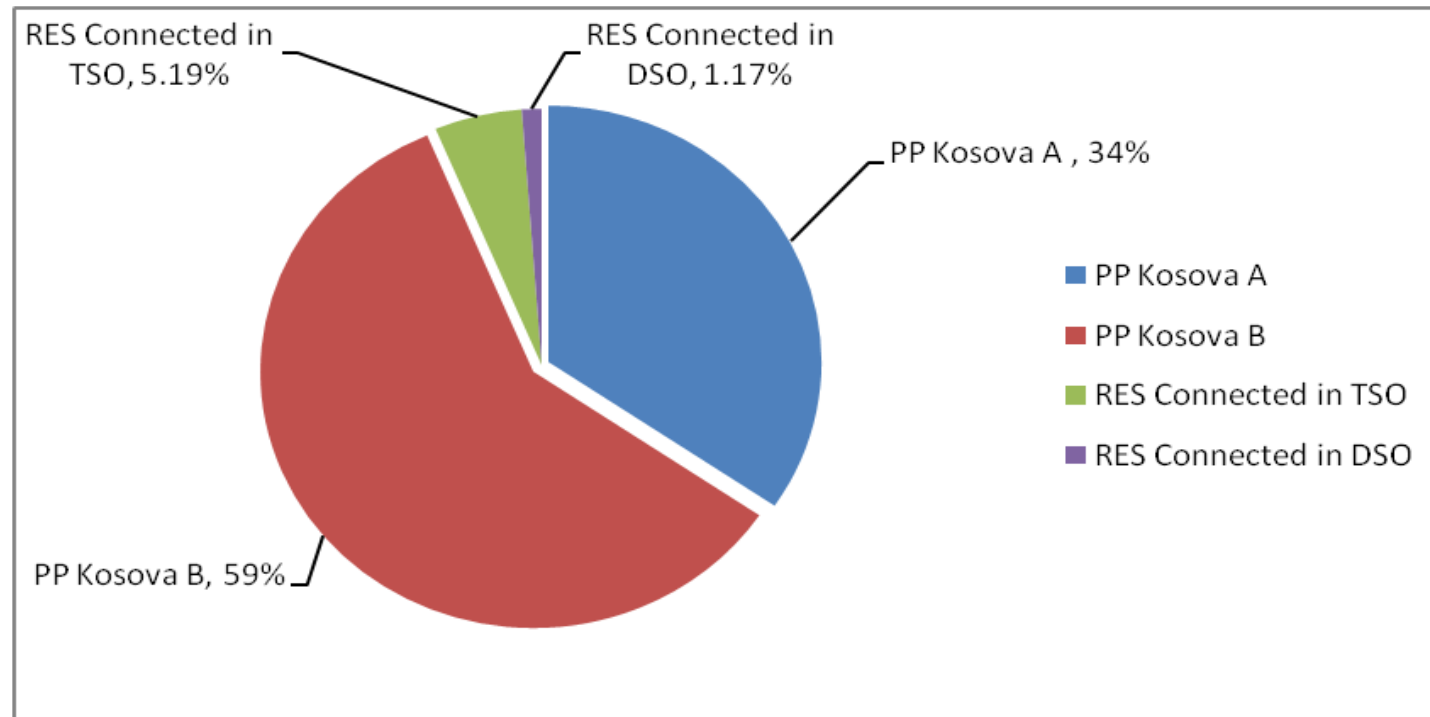
General note: *Main activates of the electricity sector during the period were not facing any unusual issue in terms of SoS.*

Installed Capacity vs Demand



A1 and A2 Unit of Thermal Power Plant Kosova A are out of operation from 2006

Generation capacity resources by types



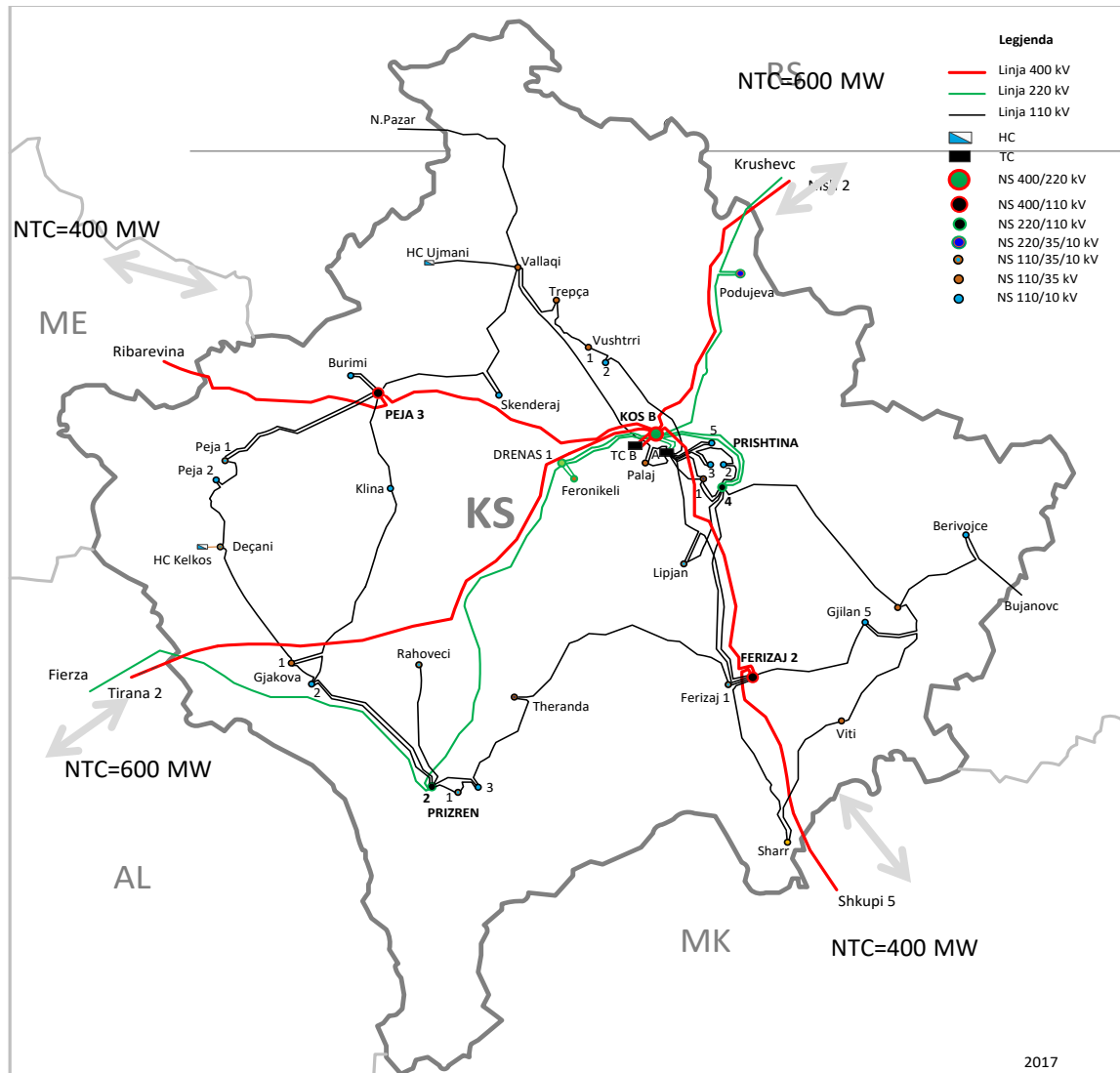
~95% of generation capacity is from Thermal Power Plants (PP Kosova A and PP Kosova B)

Generation

Description MWh	Total	Oct'18	Nov'18	Dec'18	Jan'19	Feb'19	Mar'19
PP Kosova A	1,073,229	204,975	166,306	169,402	172,323	162,323	197,900
PP Kosova B	1,935,417	179,522	340,251	352,938	365,276	328,180	369,250
TSO conn. Gener	129,553	13,670	15,245	18,345	22,604	30,351	29,338
DSO conn.gener	42,803	9,493	10,175	7,424	4,027	4,679	7,005
Import (regulated)	419,904	78,722	41,070	41,939	82,677	68,369	107,127
Total	3,600,906	486,382	573,047	590,048	646,907	593,902	710,620
Gross Consumption	3,222,937	433,250	471,932	574,829	633,697	555,128	554,101
Export	377,969	53,132	101,115	15,219	13,210	38,774	156,519

- Export are occurred during off-peak, due to the surplus of energy
- Steady coal exploration and energy production is continuing
- Around 12% of the energy is secured from import

Transmission main infrastructure and system data (actual)



Transmission lines

HV Lines in KOSTT	Line length km
400 kV	279.7
220 kV	231.8
110 kV	841.8

Total line length =1353.4 km

Power Transformers and Substations

Autotransformers	3750 MVA
Transformers	2080 MVA
Main HV Substations	6
Load Substations	28

Peak demand

Y-2015	Y-2016	Y-2017	Y-2018
1129 MW	1160 MW	1161 MW	1162

Electricity demand

Y-2015	Y-2016	Y-2017	Y-2018
5.66 TWh	5.43 TWh	5.78 TWh	5.81 TWh

~ 60million CAPEX forecast (2018-2022)

Transmission operations facts (1)

➤ **Interconnection 400kV line with Albania**

- Non-operation of in reducing the possibility of exporting or importing electricity to Albania
- The Agreement signed for secondary regulating frequency/power remains unimplemented

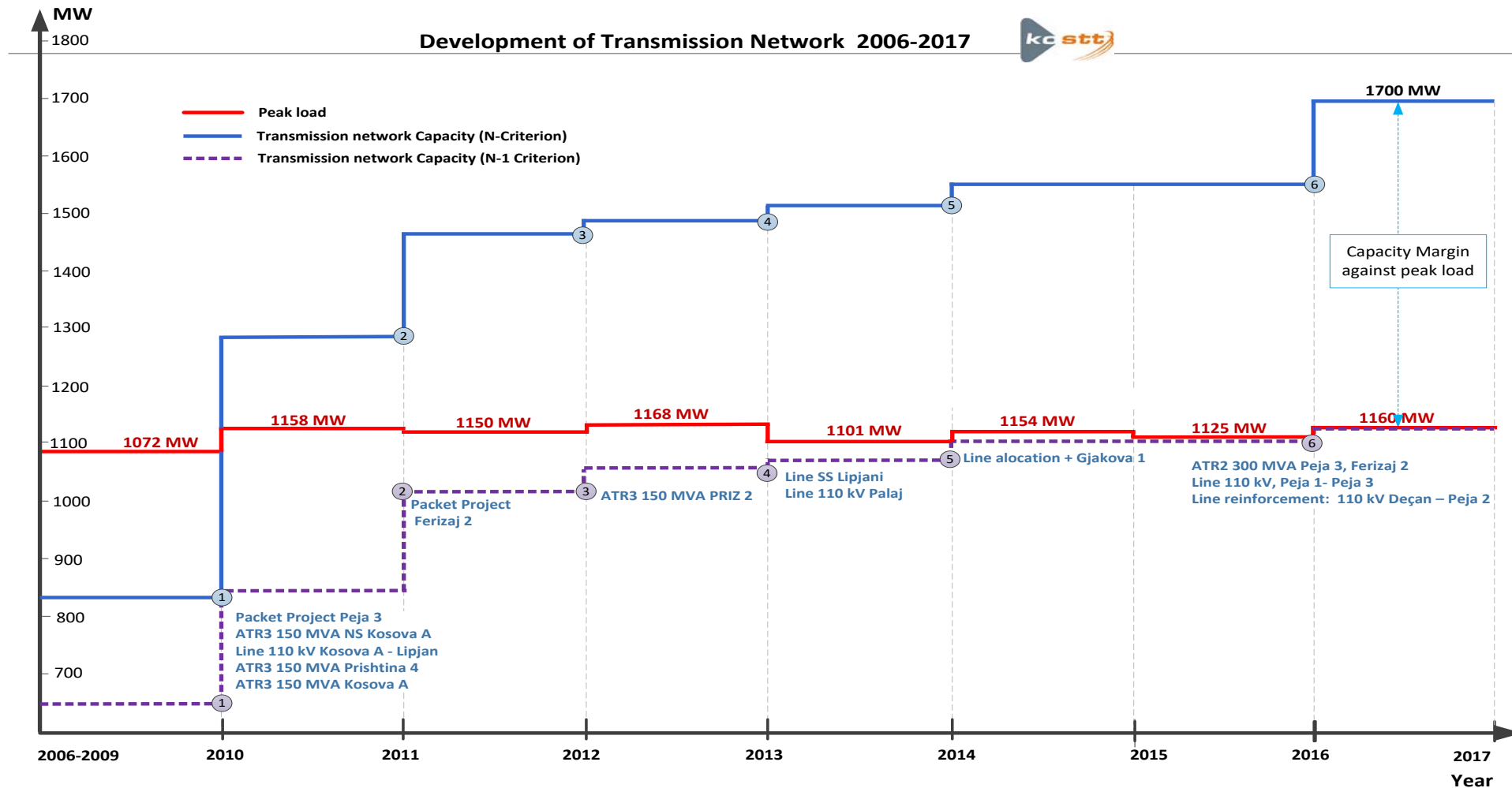
➤ **Political obstacles:**

- Non implementation of Connection Agreement with ENTSO-E;
- Financial impact (loss of revenues)

➤ **Imbalances:**

- Imbalances are created by injecting energy from system and are returned to the system when there is surplus of generation, this issue is related with supply of the north of Kosova.

Transmission operations facts (2)



Distribution

Total EED is expected to be increased by 1.4%, whereas billed energy is increased around 4% .

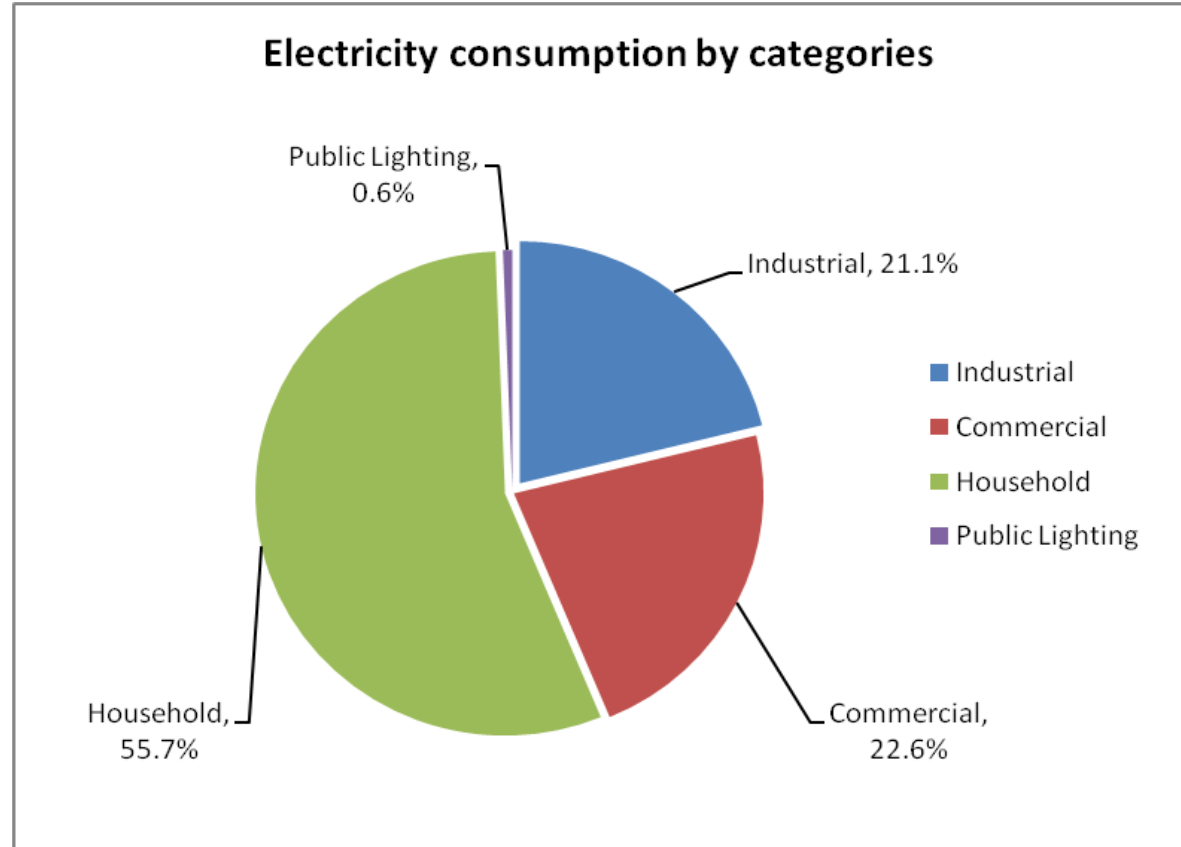
~134mil€ CAPEX forecast (2018-2022) period.

Month	Demand	Billed energy	Technical Losses*		Commercial		Total losses	
	MWh	MWh	MWh	%	MWh	%	MWh	%
Oct'18	392,417	290,117	46,954	12%	33,840	8.6%	80,794	21%
Nov'18	455,971	311,045	61,266	13%	54,857	12.0%	116,123	25%
Dec'18	459,873	331,296	62,826	14%	65,752	14.3%	128,577	28%
Jan'19	548,911	377,485	76,566	14%	94,858	17.3%	171,424	31%
Feb'19	473,140	351,782	53,486	11%	67,873	14.3%	121,359	26%
Mar'19	474,864	325,385	70,714	15%	78,765	16.6%	149,479	31%
Total	2,805,176	1,987,110	371,812	13.3%	395,945	14.1%	767,756	27.4%

**Commercial losses includes north unbilled supplies (political losses ~ 5 %)*

Supply

- Appointment of the Supplier of Last Resort. Imposition of the PSO obligation to KECO for 3 year. (ERO decision in November 2018)
- Registration in MTI of “Elektrosever” supply company. ERO has sent format to “Elektrosever” for the licensee application, and has prepared drat license.



Thank you for your attention!

