

Smart city logistics concept supporting air quality measures

EX ANTE CONSULTING



EX ANTE

EX ANTE CONSULTING - WHO WE ARE

- A Budapest based consulting firm
- 20 years in strategic and management consulting, supporting successful development strategies and projects
- Extensive international experience
- Our clients are international organisations, central administrative bodies, city governments and enterprises





Spatial & urban development



Logistics & freight forwarding



International cooperation

EVALUATION AND ANALYSIS

STRATEGY DEVELOPMENT

PROJECT PLANNING AND MANAGEGEMENT

FUNDING



EX ANTE



EXPERTS IN EU FUNDING

Our experts have 20 years of experience in EU funding for infrastructure projects, having submitted successful grant applications over the value of 300 million euros.

FOCUSING ON SMART CITY LOGISTICS

URBAN LAST-MILE DELIVERY EMISSIONS ARE ON TRACK TO INCREASE BY OVER 30 PERCENT BY 2030 IN THE TOP 100 CITIES GLOBALLY. WITHOUT INTERVENTION, THESE EMISSIONS COULD REACH 25 MILLION TONS OF CO₂ EMITTED ANNUALLY BY THAT DATE

THE LAST MILE DELIVERY OF A 250 GRAMS CONSUMER ELECTRONICS PRODUCT CAUSES UP TO 226 GRAMS OF CO₂ EMISSION

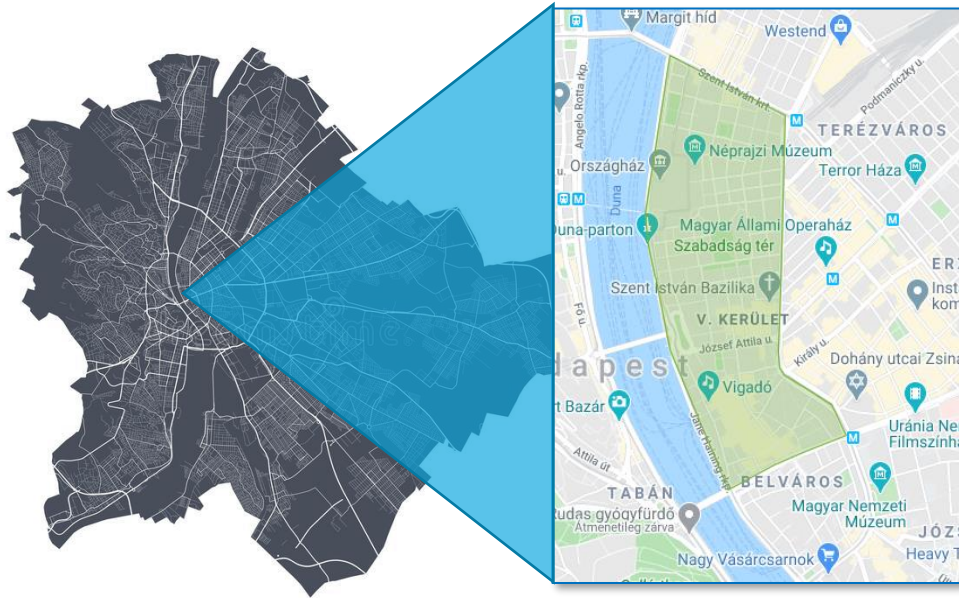
BETWEEN 20% AND 30% OF A CITY'S CARBON DIOXIDE EMISSIONS COME FROM LAST-MILE DELIVERIES



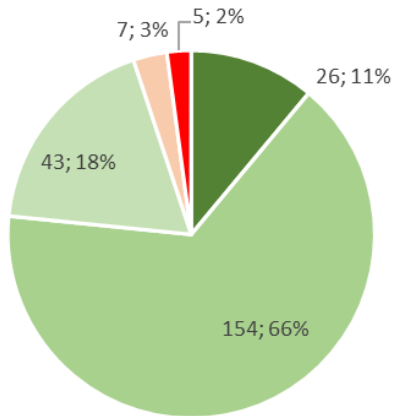


Decarbonising city logistics – from thorough concept to on-site technology solutions

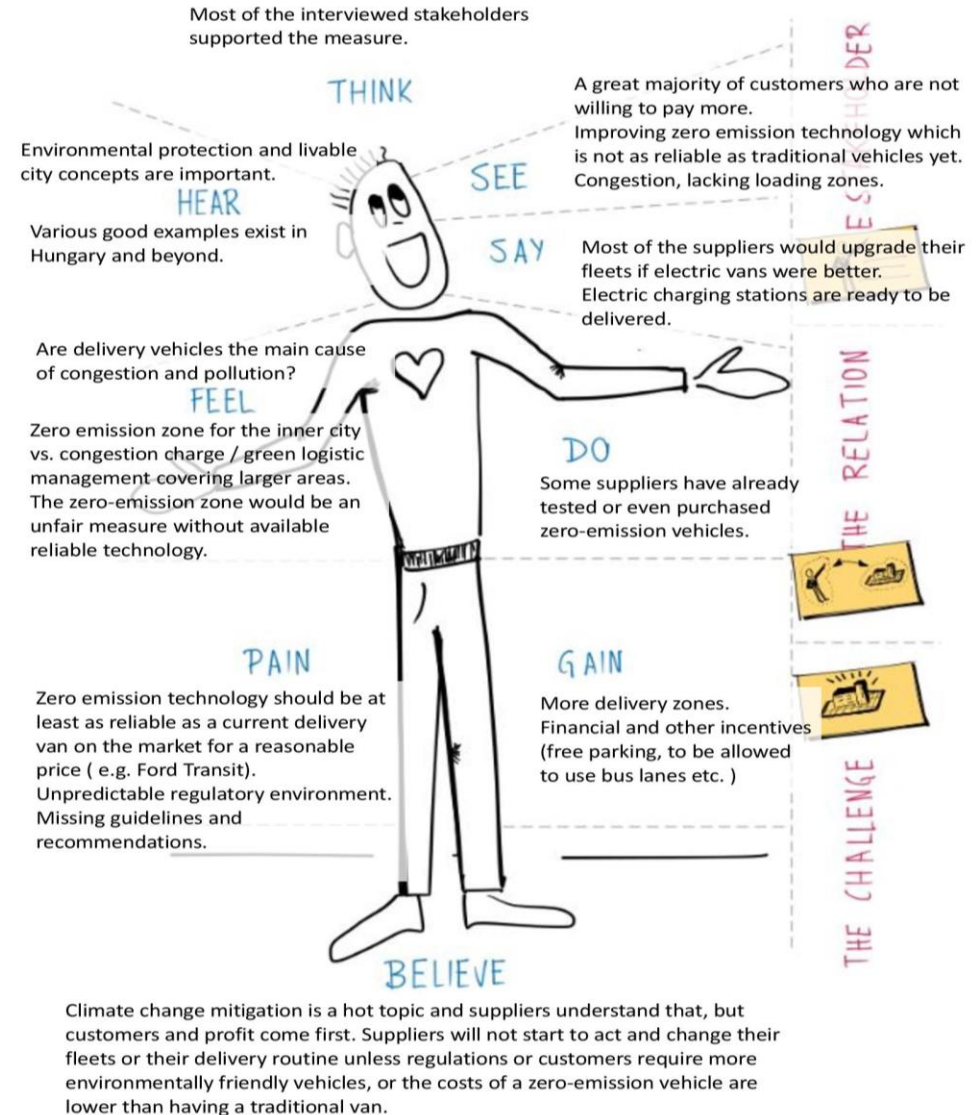
CARGO ZEZ IN THE CITY OF BUDAPEST



Would you live in a Zero Emission Cargo Zone?



- I would give anything to live there.
- I wish there was a ZEZ in my district.
- I would love to try this way of life.
- I wouldn't, everything is good in its current state.
- I would move immediately.

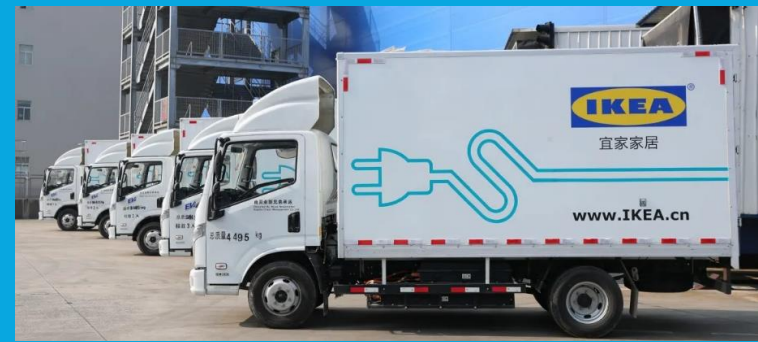


TURNING A RIVER PORT INTO E-CITY LOGISTICS CENTRE FREEPORT OF BUDAPEST

Building on international good practices



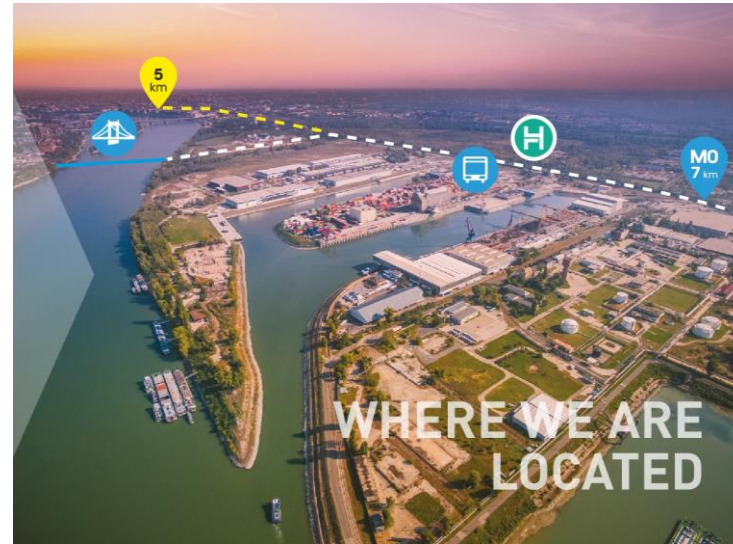
LEFV-LOGIC Netherlands



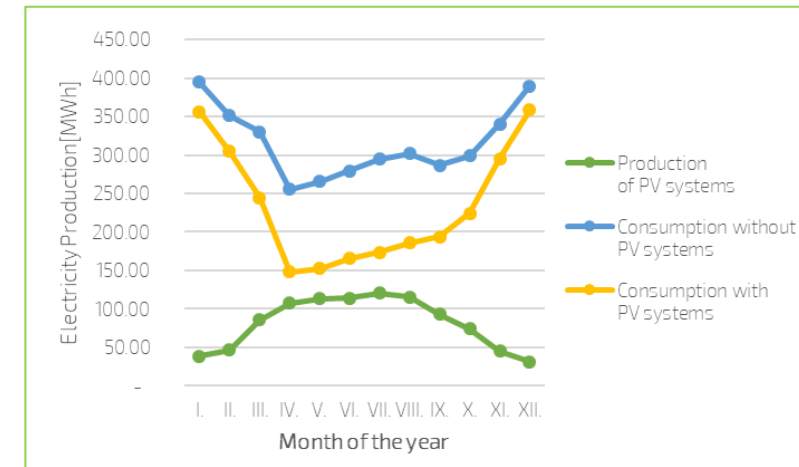
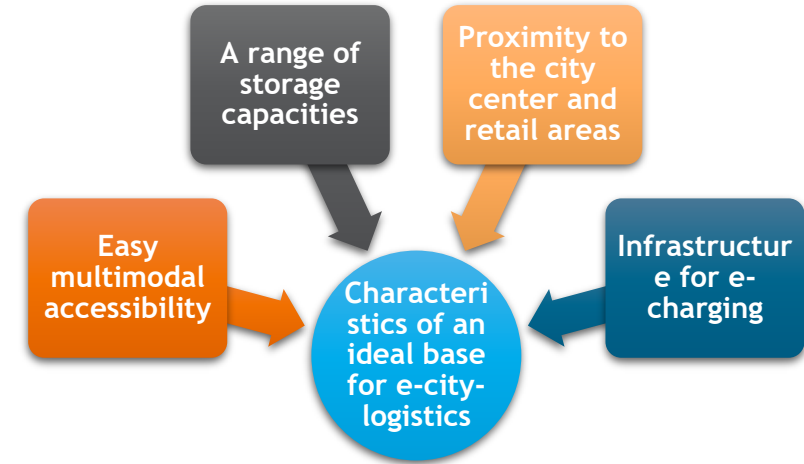
IKEA Shanghai



VULe Partagés, Paris



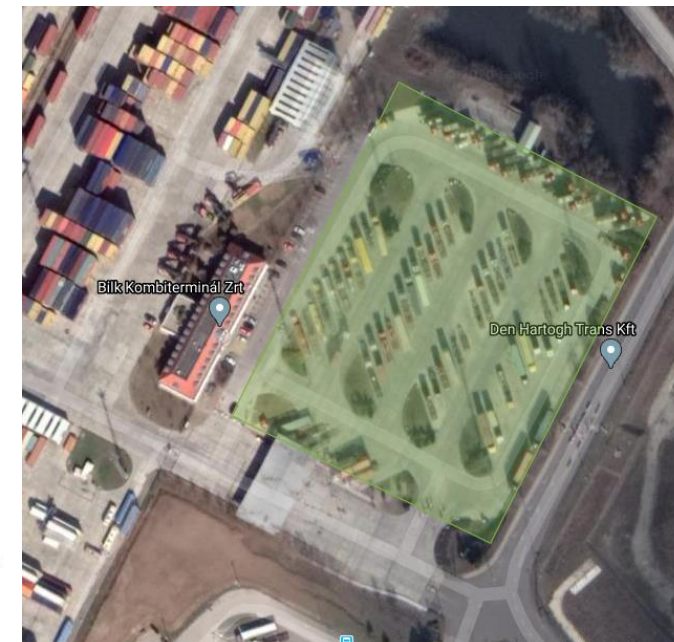
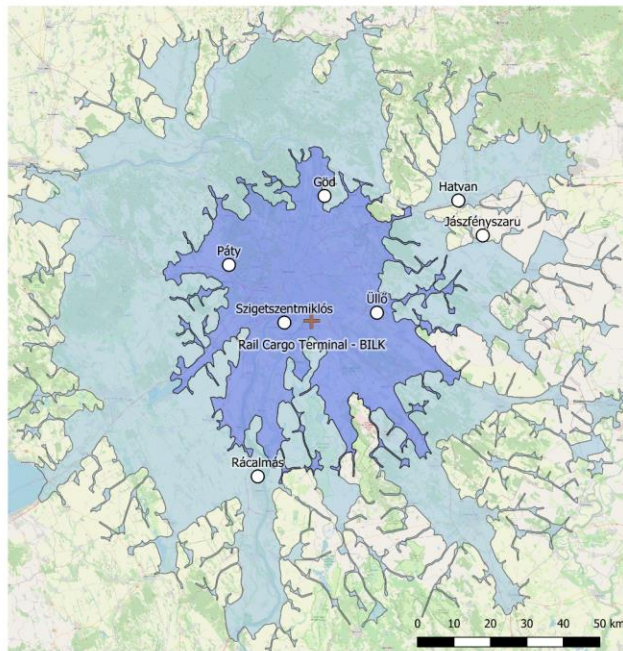
- Well chosen location
- Complex strategic approach
- Combination of e-vehicles and PV electricity production



DECARBONISING LAST MILE DELIVERY FROM A RAIL TERMINAL

BILK

Building on international good practices





OUT-OF-THE-BOX VEHICLE TECHNOLOGIES



SMART ACCESS CONTROL AND TRAFFIC MANAGEMENT SYSTEM



- Less waiting at access gates
- Shortest routes within the logistics centre
- Less congestion
- Less CO2 emission



YOUR CONTACTS



Zoltán BARNA-LÁZÁR

- Managing director
- barna@exante.hu



Dániel GÖLÖNCSÉR

- Transport&Energy Sector
- goloncser@exante.hu



Zsanett BRUNNER

- International cooperation
- brunner@exante.hu

