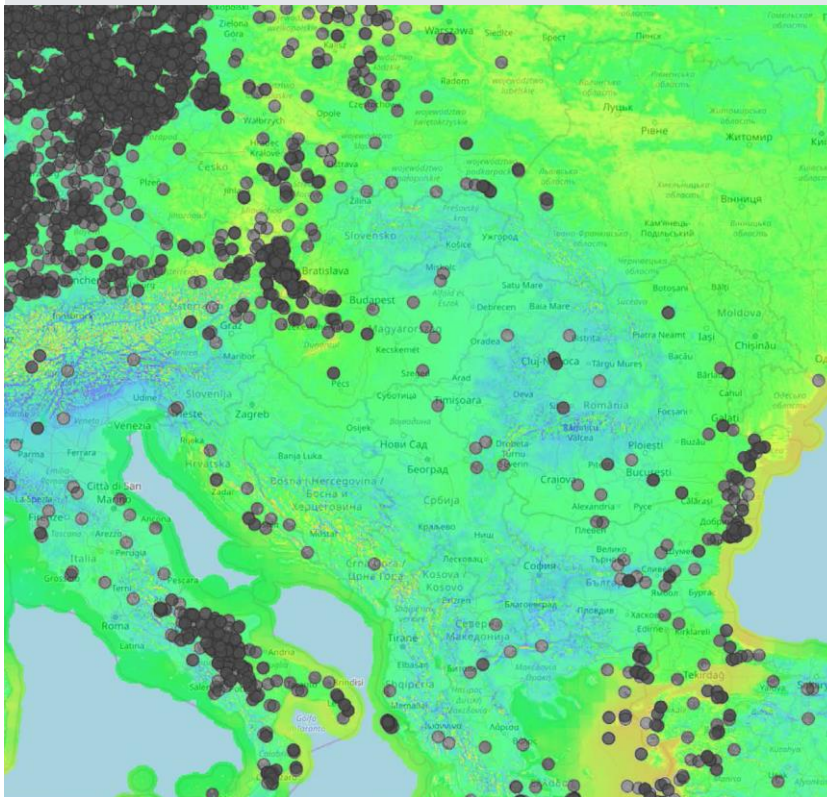


Renewable energy potentials

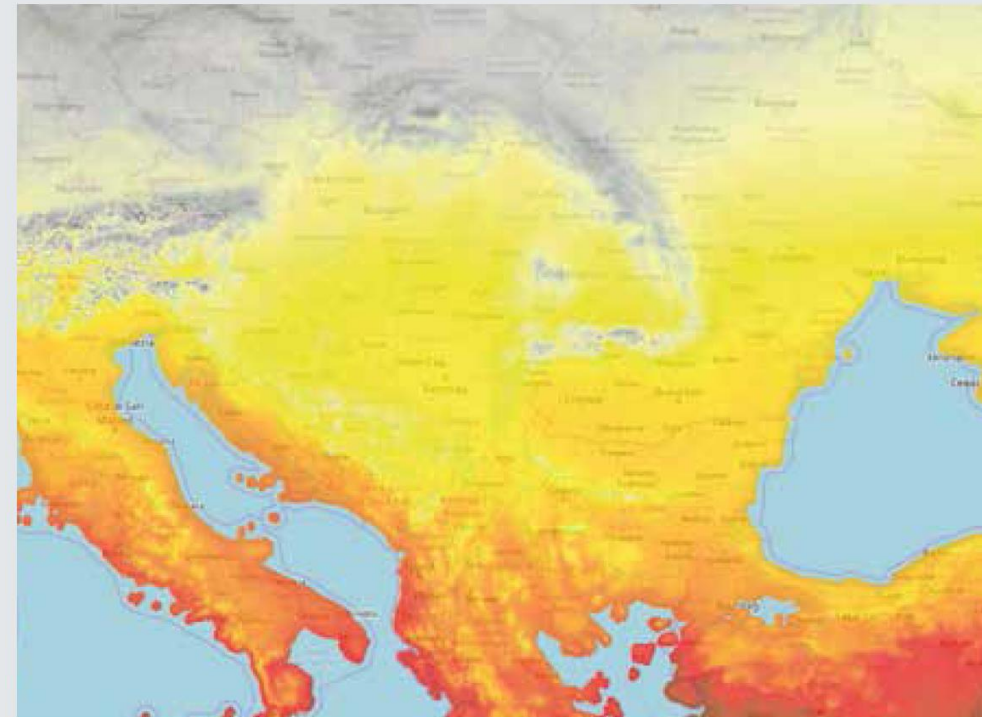
Wind speed at 100 m height



- 2 m/s
- 3 m/s
- 4 m/s
- 5 m/s
- 6 m/s
- 7 m/s
- 8 m/s
- Wind power plants

Source: IRENA

Global horizontal irradiance

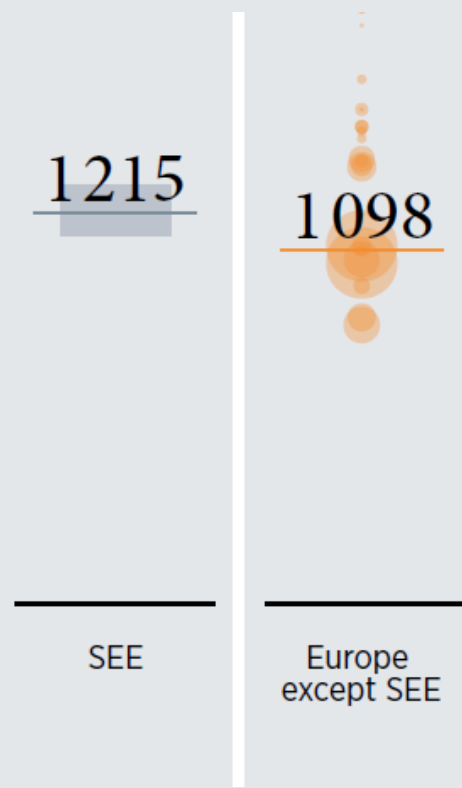


- 2.34-2.58 kWh/m²/day
- 2.58-2.83 kWh/m²/day
- 2.83-3.08 kWh/m²/day
- 3.08-3.32 kWh/m²/day
- 3.32-3.57 kWh/m²/day
- 3.57-3.81 kWh/m²/day
- 3.81-4.06 kWh/m²/day
- 4.06-4.30 kWh/m²/day
- 4.30-4.55 kWh/m²/day

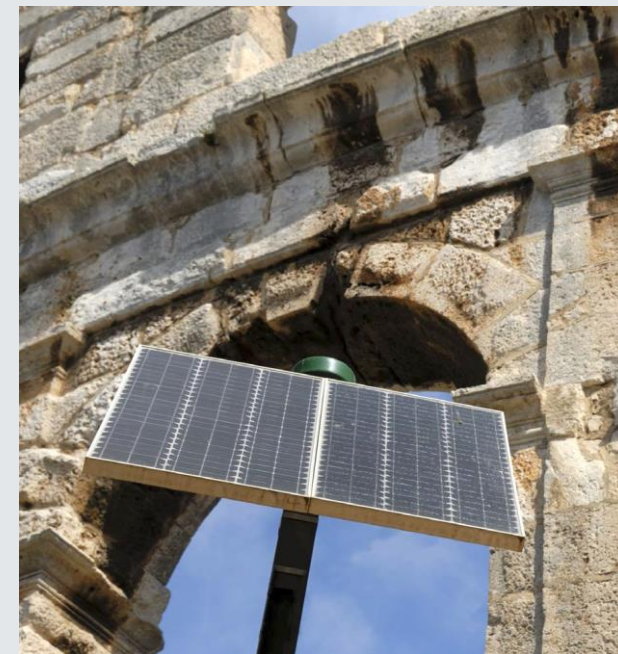
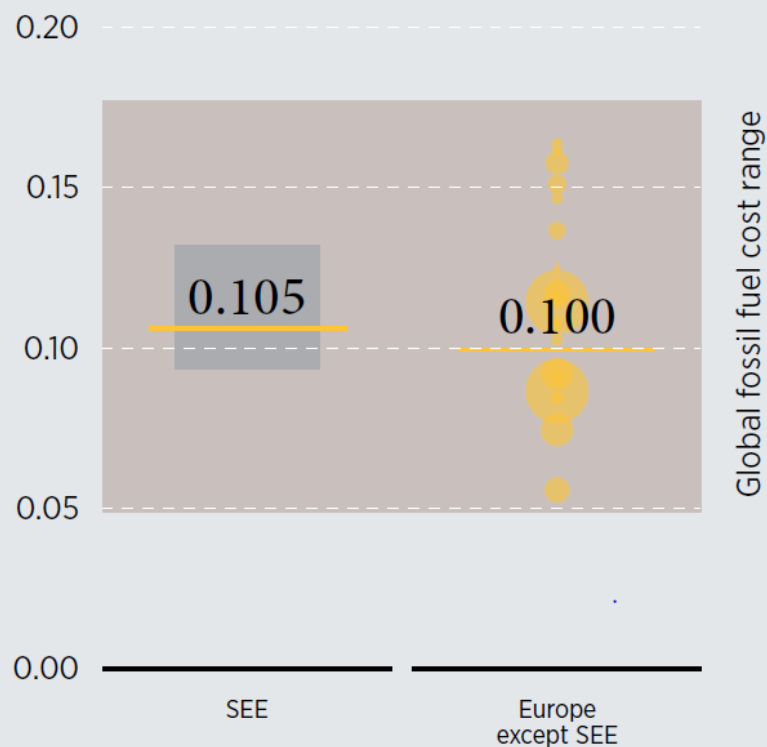
Source: IRENA (2019c)

Cost competitive VRE projects – Solar PV

Average invested cost of utility scale Solar PV, SEE vs rest of Europe, 2018 [USD/kW]

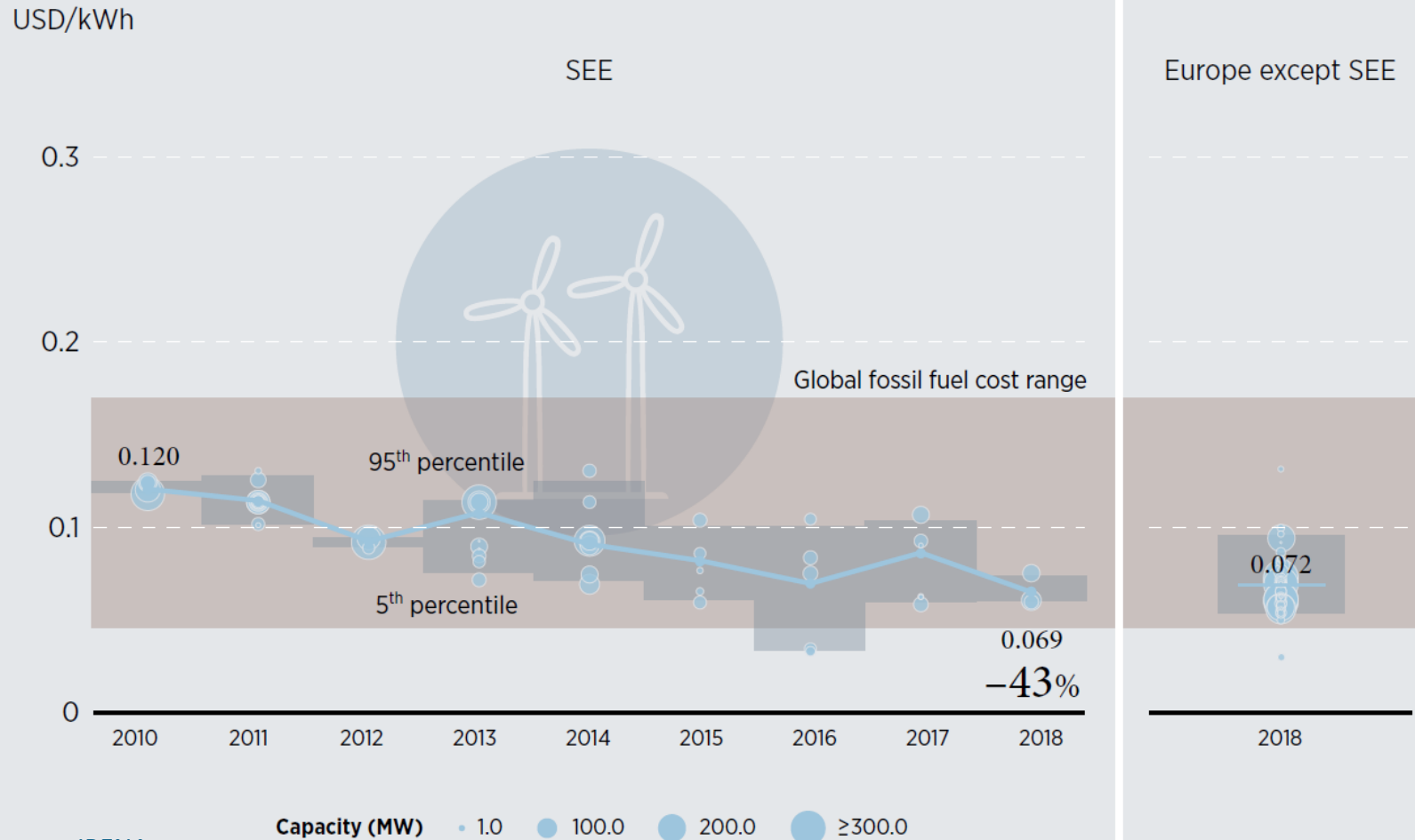


LCOE of utility scale Solar PV, SEE vs rest of Europe, 2018 [USD/kWh]



Cost competitive VRE projects – onshore wind

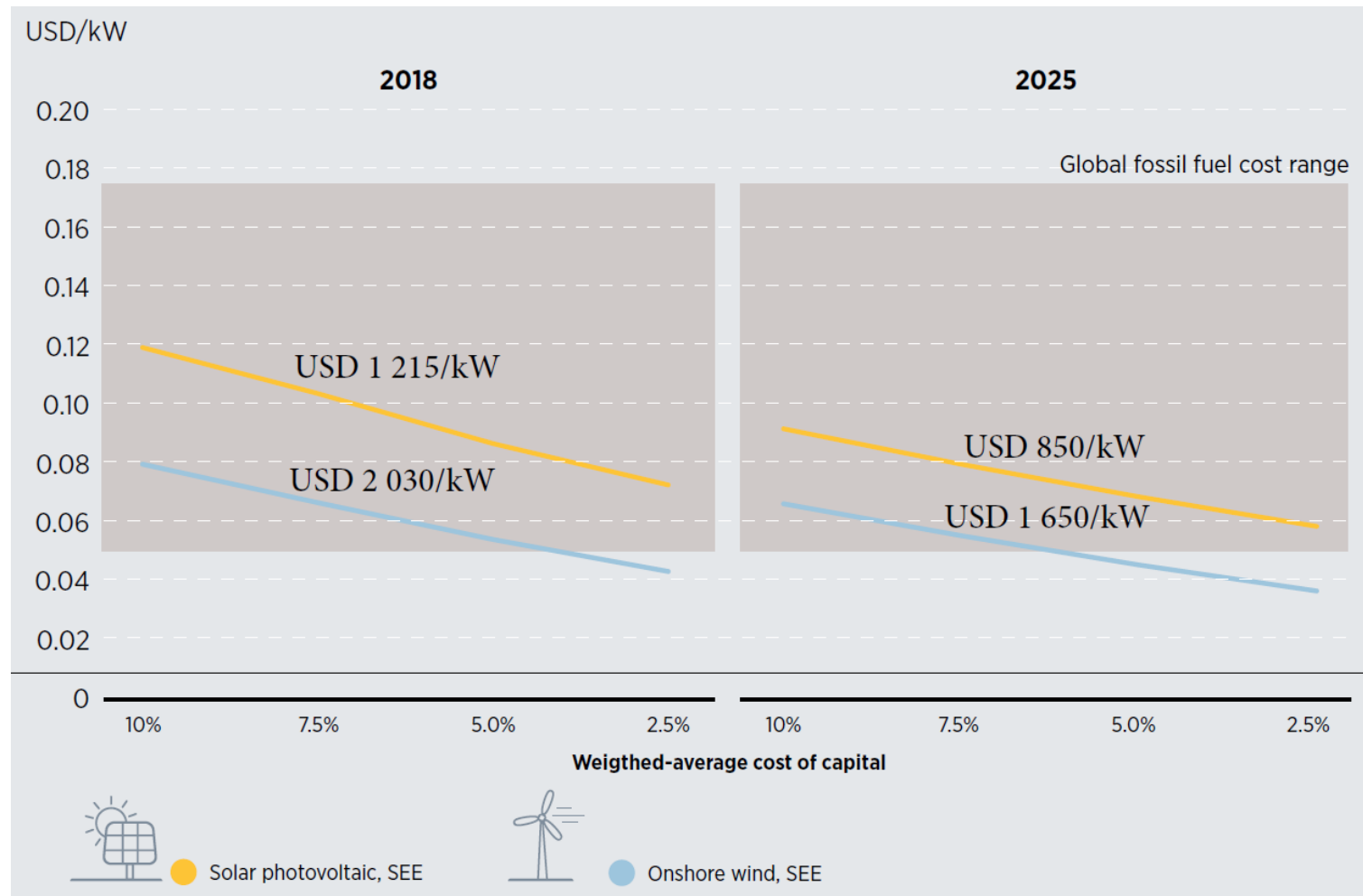
LCOE of onshore wind, SEE vs rest of Europe, 2010-18 [USD/MWh]



Source: IRENA

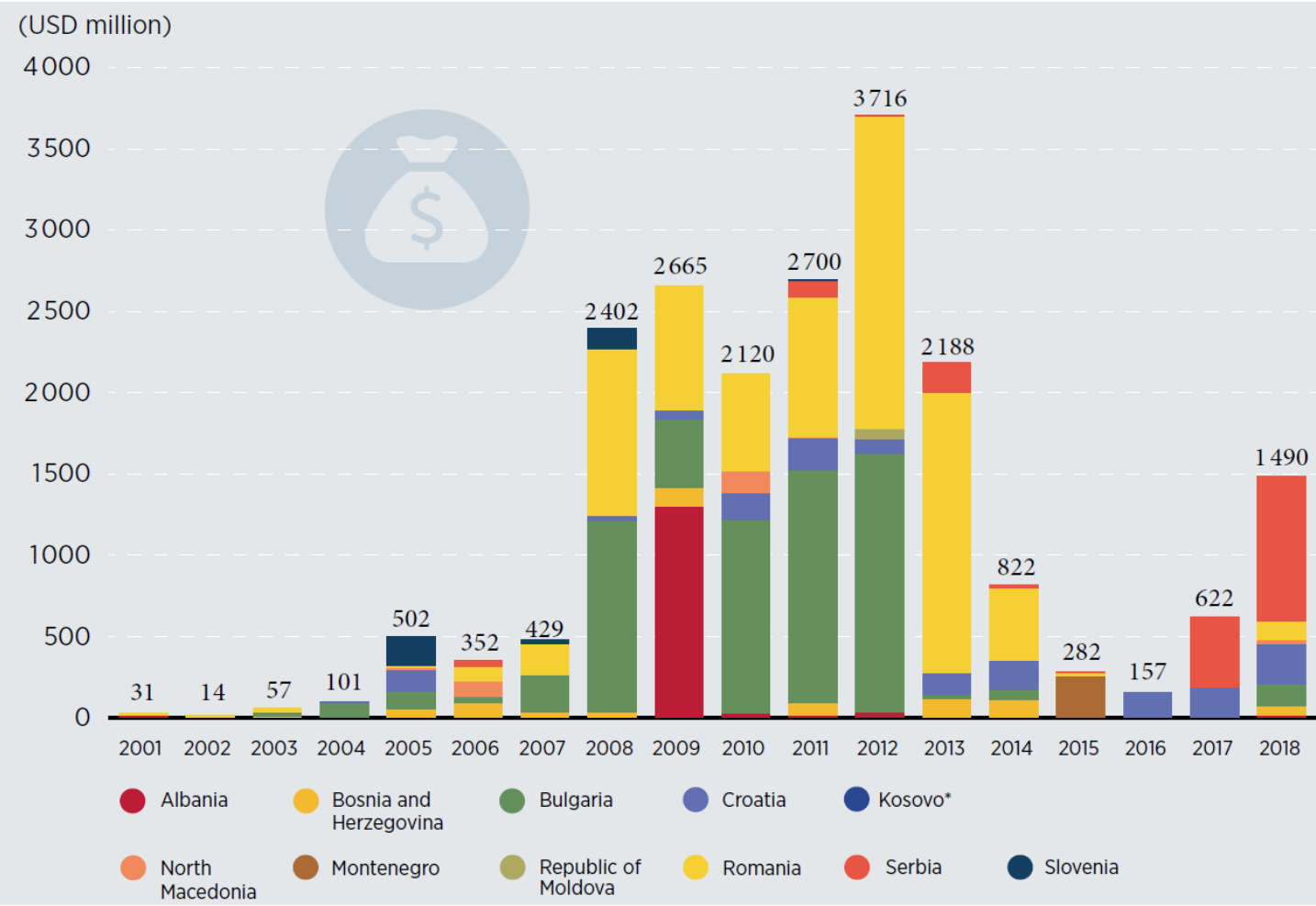
Cost of capital matters

Solar photovoltaic and onshore wind LCOE sensitivity to WACC, SEE, 2018-25 [USD/kWh]



Policies at the center of the energy transition

Investment in renewable energy [USD million]



Source: BNEF