

SEEP II



Министарство енергетике,
развија и заштите
животне средине
Republike Srbije

Ministry of Energy,
Development and
Environmental Protection
of the Republic of Serbia



РЕПУБЛИКА СРБИЈА
АГЕНЦИЈА ЗА
ЕНЕРГЕТСКУ ЕФИКАСНОСТ
REPUBLIC OF SERBIA
ENERGY EFFICIENCY
AGENCY



SERBIA ENERGY EFFICIENCY PROJECT SEEP II

ID #P090492 Credit/Loan No.: #IDA3870-1 YF/IBRD 7466



Project has been approved as the Official partner of
„Sustainable Energy Europe“ Campaign





Министарство енергетике,
развоја и заштите
животне средине
Republike Srbije

Ministry of Energy,
Development and
Environmental Protection
of the Republic of Serbia



РЕПУБЛИКА СРБИЈА
АГЕНЦИЈА ЗА
ЕНЕРГЕТСКУ ЕФИКАСНОСТ
REPUBLIC OF SERBIA
ENERGY EFFICIENCY
AGENCY



SEEP2 – SCHOOLS





Министарство енергетике,
развоја и заштите
животне средине
Republike Srbije

Ministry of Energy,
Development and
Environmental Protection
of the Republic of Serbia



РЕПУБЛИКА СРБИЈА
АГЕНЦИЈА ЗА
ЕНЕРГЕТСКУ ЕФЕКАСНОСТ
REPUBLIC OF SERBIA
ENERGY EFFICIENCY
AGENCY



Elementary School 12. decembar, Sjenica

| Area | Fuel type | Final Investment EUR | Civil Works | Mechanical Works |
|-------|-----------|----------------------|---|--------------------------|
| 7,039 | Lignite | 247,000 | Windows Replacement, Wall insulation | Thermocontrol, Balancing |



Savings

| ES 12. decembar, Sjenica | | | | |
|--|--------------|-------------|--------------------|----------|
| Heated Area m2 | | | Final Investment € | €/m2 |
| 7039 | | | 247,000 | 35.09 |
| Results | BEFORE WORKS | AFTER WORKS | Savings | |
| Annual consumption of energy for heating per m2 (kWh/m2) | 393 | 224 | 169 | 43% |
| Annual CO2 emission (t) | 116 | 66 | 50 | 43% |
| Investment Pay Back Period (years) | | | | 10.5 |
| Savings € | | | | 25,000 € |
| Fuel savings | | | | 3 |



Министарство енергетике,
развоја и заштите
животне средине
Republike Srbije

Ministry of Energy,
Development and
Environmental Protection
of the Republic of Serbia



РЕПУБЛИКА СРБИЈА
АГЕНЦИЈА ЗА
ЕНЕРГЕТСКУ ЕФИКАСНОСТ
REPUBLIC OF SERBIA
ENERGY EFFICIENCY
AGENCY



Elementary School Petar Lekovic, Pozega

| Area | Fuel type | Final Investment EUR | Civil Works | Mechanical Works |
|-------|----------------|----------------------|---------------------|--------------------------|
| 5,113 | Light Fuel Oil | 185,066 | Windows Replacement | Thermocontrol, Balancing |



Savings

| ES Petar Lekovic, Pozega | | | | |
|--|--------------|-------------|--------------------|----------|
| Heated Area m2 | | | Final Investment € | €/m2 |
| 5,113 | | | 185,066 | 36,20 |
| Results | BEFORE WORKS | AFTER WORKS | Savings | |
| Annual consumption of energy for heating per m2 (kWh/m2) | 270 | 159 | 111 | 41% |
| Annual CO2 emission (t) | 74 | 44 | 30 | 41% |
| Investment Pay Back Period (years) | | | | 10,5 |
| Savings € | | | | 18,000 € |
| Fuel savings | | | 2 | |



Министарство енергетике,
развоја и заштите
животне средине
Republike Srbije

Ministry of Energy,
Development and
Environmental Protection
of the Republic of Serbia



РЕПУБЛИКА СРБИЈА
АГЕНЦИЈА ЗА
ЕНЕРГЕТСКУ ЕФИКАСНОСТ
REPUBLIC OF SERBIA
ENERGY EFFICIENCY
AGENCY



ELEMENTARY SCHOOL „DESPOT STEFAN LAZAREVIC“, BABUSNICA

| Area | Fuel type | Final Investment EUR | Civil Works | Mechanical Works |
|-------|-----------|----------------------|--|--------------------------|
| 3,079 | Coal | 173,243 | Windows Replacement; Attic Insulation | Thermocontrol, Balancing |



Savings

| ES Despot Stefan Lazarevic, Babusnica | | | | |
|--|--------------|-------------|--------------------|----------|
| Heated Area m2 | | | Final Investment € | €/m2 |
| 3,079 | | | 173,243 | 56,27 |
| Results | BEFORE WORKS | AFTER WORKS | Savings | |
| Annual consumption of energy for heating per m2 (kWh/m2) | 282 | 84 | 198 | 70% |
| Annual CO2 emission (t) | 82 | 24 | 58 | 71% |
| Investment Pay Back Period (years) | | | | 14,5 |
| Savings € | | | | 12,000 € |
| Fuel savings | | | | 1 |

Social Survey Results: increase of indoor comfort and rise of beneficiaries satisfaction



Министарство енергетике,
развоја и заштите
животне средине
Republike Srbije

Ministry of Energy,
Development and
Environmental Protection
of the Republic of Serbia

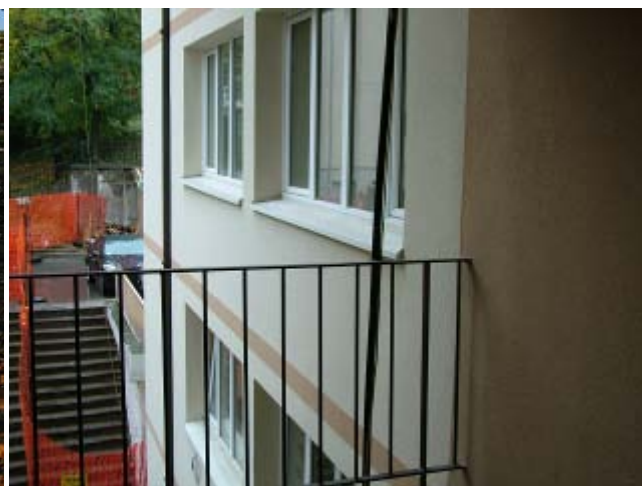


РЕПУБЛИКА СРБИЈА
АГЕНЦИЈА ЗА
ЕНЕРГЕТСКУ ЕФЕКТИВНОСТ
REPUBLIC OF SERBIA
ENERGY EFFICIENCY
AGENCY



"Patris Lumumba" – Dormitory, Belgrade

| Area | Fuel type | Final Investment EUR | Civil Works | Mechanical Works |
|-------|----------------|----------------------|---------------------|--------------------------|
| 2,435 | Light Fuel Oil | 102,661 | Windows Replacement | Thermocontrol, Balancing |



Savings

| "Patris Lumumba" - Dormitory | | | | |
|--|--------------|-------------|--------------------|----------|
| Heated Area m2 | | | Final Investment € | €/m2 |
| 2,435 | | | 102,661 | 42,16 |
| Results | BEFORE WORKS | AFTER WORKS | Savings | |
| Annual consumption of energy for heating per m2 (kWh/m2) | 322 | 242 | 81 | 25% |
| Annual CO2 emission (t) | 89 | 66 | 23 | 26% |
| Investment Pay Back Period (years) | | | | 6,5 |
| Savings € | | | | 15,000 € |
| Fuel savings | | | 2 | |

Social Survey Results: increase of indoor comfort and rise of beneficiaries satisfaction



Министарство енергетике,
развоја и заштите
животне средине
Republike Srbije

Ministry of Energy,
Development and
Environmental Protection
of the Republic of Serbia



РЕПУБЛИКА СРБИЈА
АГЕНЦИЈА ЗА
ЕНЕРГЕТСКУ ЕФИКАСНОСТ
REPUBLIC OF SERBIA
ENERGY EFFICIENCY
AGENCY



Secondary School for Agriculture and Veterinary, Vranje

| Area | Fuel type | Final Investment EUR | Civil Works | Mechanical Works |
|-------|----------------|----------------------|---|--------------------------|
| 2,752 | Light Fuel Oil | 318,233 | Windows Replacement, Roof Insulation, Wall insulation | Thermocontrol, Balancing |



Savings

| Secondary School for Agriculture and Veterinary, Vranje | | | | |
|---|--------------|-------------|--------------------|------------------|
| Heated Area m ² | | | Final Investment € | €/m ² |
| 2,752 | | | 318,233 | 115,64 |
| Results | BEFORE WORKS | AFTER WORKS | Savings | |
| Annual consumption of energy for heating per m ² (kWh/m ²) | 121 | 39 | 82 | 68% |
| Annual CO ₂ emission (t) | 32 | 10 | 22 | 68% |
| Investment Pay Back Period (years) | | | | 17,0 |
| Savings € | | | | 18,000 € |
| Fuel savings | | | 2 | |



Министарство енергетике,
развоја и заштите
животне средине
Republike Srbije

Ministry of Energy,
Development and
Environmental Protection
of the Republic of Serbia



РЕПУБЛИКА СРБИЈА
АГЕНЦИЈА ЗА
ЕНЕРГЕТСКУ ЕФИКАСНОСТ
REPUBLIC OF SERBIA
ENERGY EFFICIENCY
AGENCY



Elementary School Branko Radicevic, Priboj

| Area | Fuel type | Final Investment EUR | Civil Works | Mechanical Works |
|-------|-----------|----------------------|---------------------|--------------------------|
| 3,300 | Lignite | 124,546 | Windows Replacement | Thermocontrol, Balancing |



Savings

| ES Branko Radicevic, Priboj | | | | |
|--|--------------|-------------|--------------------|----------|
| Heated Area m2 | | | Final Investment € | €/m2 |
| 3,300 | | | 124,546 | 37,74 |
| Results | BEFORE WORKS | AFTER WORKS | Savings | |
| Annual consumption of energy for heating per m2 (kWh/m2) | 630 | 372 | 258 | 41% |
| Annual CO2 emission (t) | 186 | 110 | 76 | 41% |
| Investment Pay Back Period (years) | | | | 7,6 |
| Savings € | | | | 16,500 € |
| Fuel savings | | | 2 | |

Social Survey Results: increase of indoor comfort and rise of beneficiaries satisfaction



Министарство енергетике,
развоја и заштите
животне средине
Republike Srbije

Ministry of Energy,
Development and
Environmental Protection
of the Republic of Serbia



РЕПУБЛИКА СРБИЈА
АГЕНЦИЈА ЗА
ЕНЕРГЕТСКУ ЕФИКАСНОСТ
REPUBLIC OF SERBIA
ENERGY EFFICIENCY
AGENCY



Technology School Prijepolje, Prijepolje

| Area | Fuel type | Final Investment EUR | Civil Works | Mechanical Works |
|-------|-----------|----------------------|---|--------------------------|
| 4,629 | Coal | 260,819 | Windows Replacement, Wall insulation | Thermocontrol, Balancing |



Savings

| Technology School Prijepolje, Prijepolje | | | | |
|--|--------------|-------------|--------------------|----------|
| Heated Area m2 | | | Final Investment € | €/m2 |
| 4,629 | | | 260,819 | 56,34 |
| Results | BEFORE WORKS | AFTER WORKS | Savings | |
| Annual consumption of energy for heating per m2 (kWh/m2) | 264 | 135 | 129 | 49% |
| Annual CO2 emission (t) | 79 | 40 | 39 | 49% |
| Investment Pay Back Period (years) | | | | 22,5 |
| Savings € | | | | 11,500 € |
| Fuel savings | | | | 1 |

Social Survey Results: increase of indoor comfort and rise of beneficiaries satisfaction



Министарство енергетике,
развоја и заштите
животне средине
Republike Srbije

Ministry of Energy,
Development and
Environmental Protection
of the Republic of Serbia



РЕПУБЛИКА СРБИЈА
АГЕНЦИЈА ЗА
ЕНЕРГЕТСКУ ЕФИКАСНОСТ
REPUBLIC OF SERBIA
ENERGY EFFICIENCY
AGENCY



Secondary Scool Rajko Bosnic, Bukovo

| Area | Fuel type | Final Investme nt EUR | Civil Works | Mechanical Works |
|-------|----------------|-----------------------|---|---------------------------|
| 4,184 | Light Fuel Oil | 380,645 | Windows Replacement, Roof Insulation, Wall insulation | Thermocontroll, Balancing |
| | | 19,503 | Partial Lihgting | |



Savings

| SS Rajko Bosnic, Bukovo | | | | |
|--|--------------|-------------|----------------------------------|--------------------------|
| Heated Area m2 | | | Final Investment € | €/m2 |
| 4,184 | | | 380,645 | 90,98 |
| Results | BEFORE WORKS | AFTER WORKS | Annual Savings - absolute values | Savings - percentage (%) |
| Annual consumption of energy for heating per m2 (kWh/m2) | 167 | 39 | 128 | 77% |
| Annual CO2 emission (t) | 49 | 11 | 37 | 77% |
| Investment Pay Back Period (years) | | | | 23,8 |
| Savings € | | | | 16,000 € |
| Fuel savings | | | | 2 |

Social Survey Results: increase of indoor comfort and rise of beneficiaries satisfaction



Министарство енергетике,
развоја и заштите
животне средине
Republike Srbije

Ministry of Energy,
Development and
Environmental Protection
of the Republic of Serbia



РЕПУБЛИКА СРБИЈА
АГЕНЦИЈА ЗА
ЕНЕРГЕТСКУ ЕФИКАСНОСТ
REPUBLIC OF SERBIA
ENERGY EFFICIENCY
AGENCY



ES „STEVAN SREMAC“, BORCA

| Area | Fuel type | Final Investment EUR | Civil Works | Mechanical Works |
|-------|-----------|----------------------|-----------------------------|--------------------------|
| 2,810 | DH | 47,122 | Partial Windows Replacement | Thermocontrol, Balancing |
| | | 12,135 | Partial Lighting Retrofit | |



Savings

| ES Stevan Sremac, Borca | | | | |
|--|--------------|-------------|--------------------|---------|
| Heated Area m2 | | | Final Investment € | €/m2 |
| 2,810 | | | 47,122 | 16,77 |
| Results | BEFORE WORKS | AFTER WORKS | Savings | |
| Annual consumption of energy for heating per m2 (kWh/m2) | 163 | 136 | 27 | 17% |
| Annual CO2 emission (t) | 34 | 28 | 6 | 18% |
| Investment Pay Back Period (years) | | | | 6,2 |
| Savings € | | | | 7,650 € |
| Fuel savings | | | | 1 |

Social Survey Results: increase of indoor comfort and rise of beneficiaries satisfaction



Министарство енергетике,
развоја и заштите
животне средине
Republike Srbije

Ministry of Energy,
Development and
Environmental Protection
of the Republic of Serbia



РЕПУБЛИКА СРБИЈА
АГЕНЦИЈА ЗА
ЕНЕРГЕТСКУ ЕФЕКТИВНОСТ
REPUBLIC OF SERBIA
ENERGY EFFICIENCY
AGENCY



Elementary School Slobodan Sekulic, Uzice

| Area | Fuel type | Final Investment EUR | Civil Works | Mechanical Works |
|-------|----------------|----------------------|--|--------------------------|
| 5,559 | Light Fuel Oil | 377,332 | Windows Replacement, Flat Roof Insulation | Thermocontrol, Balancing |



Savings

| ES Slobodan Sekulic, Uzice | | | | |
|--|--------------|-------------|----------------------------------|--------------------------|
| Heated Area m2 | | | Final Investment € | €/m2 |
| 5,559 | | | 377,332 | 67,88 |
| Results | BEFORE WORKS | AFTER WORKS | Annual Savings - absolute values | Savings - percentage (%) |
| Annual consumption of energy for heating per m2 (kWh/m2) | 269 | 124 | 145 | 54% |
| Annual CO2 emission (t) | 74 | 34 | 40 | 54% |
| Investment Pay Back Period (years) | | | | 6,1 |
| Savings € | | | | 62,000 € |
| Fuel savings | | | | 6 |



Министарство енергетике,
развоја и заштите
животне средине
Republike Srbije

Ministry of Energy,
Development and
Environmental Protection
of the Republic of Serbia



РЕПУБЛИКА СРБИЈА
АГЕНЦИЈА ЗА
ЕНЕРГЕТСКУ ЕФИКАСНОСТ
REPUBLIC OF SERBIA
ENERGY EFFICIENCY
AGENCY



ES MILAN MIJALKOVIC, Jagodina

| Area | Fuel type | Final Investment EUR | Civil Works | Mechanical Works |
|-------|-----------|----------------------|---------------------------------------|--------------------------|
| 4,246 | DH | 220,818 | Windows Replacement, Attic Insulation | Thermocontrol, Balancing |



Savings

| ES Milan Mijalkovic, Jagodina | | | | |
|--|--------------|-------------|----------------------------------|--------------------------|
| Heated Area m2 | | | Final Investment € | €/m2 |
| 4,246 | | | 220,818 | 52,01 |
| Results | BEFORE WORKS | AFTER WORKS | Annual Savings - absolute values | Savings - percentage (%) |
| Annual consumption of energy for heating per m2 (kWh/m2) | 168 | 80 | 88 | 52% |
| Annual CO2 emission (t) | 35 | 17 | 18 | 52% |
| Investment Pay Back Period (years) | | | | 15,6 |
| Savings € | | | | 14,200 € |
| Fuel savings | | | | 1 |



Министарство енергетике,
развоја и заштите
животне средине
Republike Srbije

Ministry of Energy,
Development and
Environmental Protection
of the Republic of Serbia



РЕПУБЛИКА СРБИЈА
АГЕНЦИЈА ЗА
ЕНЕРГЕТСКУ ЕФИКАСНОСТ
REPUBLIC OF SERBIA
ENERGY EFFICIENCY
AGENCY



Elementary School Milan Blagojevic, Lucani

| Area | Fuel type | Final Investment EUR | Civil Works | Mechanical Works |
|-------|-----------|----------------------|--|--------------------------|
| 4,564 | DH | 522,943 | Windows Replacement, Attic Insulation, Wall insulation | Thermocontrol, Balancing |



Savings

| ES Milan Blagojevic, Lucani | | | | |
|--|--------------|-------------|----------------------------------|--------------------------|
| Heated Area m2 | | | Final Investment € | €/m2 |
| 4,564 | | | 522,943 | 114,58 |
| Results | BEFORE WORKS | AFTER WORKS | Annual Savings - absolute values | Savings - percentage (%) |
| Annual consumption of energy for heating per m2 (kWh/m2) | 221 | 91 | 130 | 59% |
| Annual CO2 emission (t) | 64 | 27 | 37 | 58% |
| Investment Pay Back Period (years) | | | | 11,9 |
| Savings € | | | | 44,000 € |
| Fuel savings | | | | 4 |

Social Survey Results: increase of indoor comfort and rise of beneficiaries satisfaction



Министарство енергетике,
развоја и заштите
животне средине
Republike Srbije

Ministry of Energy,
Development and
Environmental Protection
of the Republic of Serbia



РЕПУБЛИКА СРБИЈА
АГЕНЦИЈА ЗА
ЕНЕРГЕТСКУ ЕФИКАСНОСТ
REPUBLIC OF SERBIA
ENERGY EFFICIENCY
AGENCY



TECHNICAL SCHOOL PIROT

| Area | Fuel type | Final Investment EUR | Civil Works | Mechanical Works |
|-------|-----------|----------------------|---------------------|--------------------------|
| 4,459 | DH | 230,119 | Windows Replacement | Thermocontrol, Balancing |



Savings

| Technical School Pirot | | | | |
|--|--------------|-------------|--------------------|---------|
| Heated Area m2 | | | Final Investment € | €/m2 |
| 4,459 | | | 230,119 | 51,61 |
| Results | BEFORE WORKS | AFTER WORKS | Savings | |
| Annual consumption of energy for heating per m2 (kWh/m2) | 198 | 130 | 68 | 34% |
| Annual CO2 emission (t) | 58 | 38 | 20 | 34% |
| Investment Pay Back Period (years) | | | | 28,9 |
| Savings € | | | | 8,000 € |
| Fuel savings | | | | 1 |



Министарство енергетике,
развоја и заштите
животне средине
Republike Srbije

Ministry of Energy,
Development and
Environmental Protection
of the Republic of Serbia



РЕПУБЛИКА СРБИЈА
АГЕНЦИЈА ЗА
ЕНЕРГЕТСКУ ЕФИКАСНОСТ
REPUBLIC OF SERBIA
ENERGY EFFICIENCY
AGENCY



ES „SVETI SAVA“, VELIKA PLANA

| Area | Fuel type | Final Investment EUR | Civil Works | Mechanical Works |
|-------|-----------|----------------------|--|--------------------------|
| 3,846 | DH | 340,572 | Windows Replacement, Attic Insulation, Wall insulation | Thermocontrol, Balancing |



Savings

| ES Sveti Sava, Velika Plana | | | | |
|--|--------------|-------------|--------------------|----------|
| Heated Area m2 | | | Final Investment € | €/m2 |
| 3,846 | | | 340,572 | 88,55 |
| Results | BEFORE WORKS | AFTER WORKS | Savings | |
| Annual consumption of energy for heating per m2 (kWh/m2) | 121 | 59 | 62 | 51% |
| Annual CO2 emission (t) | 25 | 12 | 13 | 52% |
| Investment Pay Back Period (years) | | | | 20,2 |
| Savings € | | | | 17,000 € |
| Fuel savings | | | 2 | |



Social Survey Results: increase of indoor comfort and rise of beneficiaries satisfaction



Министарство енергетике,
развоја и заштите
животне средине
Republike Srbije

Ministry of Energy,
Development and
Environmental Protection
of the Republic of Serbia



РЕПУБЛИКА СРБИЈА
АГЕНЦИЈА ЗА
ЕНЕРГЕТСКУ ЕФЕКАСНОСТ
REPUBLIC OF SERBIA
ENERGY EFFICIENCY
AGENCY



ES JOVAN JOVANOVIC ZMAJ, BRUS

| Area | Fuel type | Final Investment EUR | Civil Works | Mechanical Works |
|-------|----------------|----------------------|---|--------------------------|
| 4,717 | Light Fuel Oil | 279,961 | Windows Replacement; Wall Insulation | Thermocontrol, Balancing |



Savings

| ES Jovan Jovanovic Zmaj, Brus | | | | |
|--|--------------|-------------|--------------------|----------|
| Heated Area m2 | | | Final Investment € | €/m2 |
| 4,717 | | | 279,961 | 59,35 |
| Results | BEFORE WORKS | AFTER WORKS | Savings | |
| Annual consumption of energy for heating per m2 (kWh/m2) | 258 | 106 | 152 | 59% |
| Annual CO2 emission (t) | 67 | 28 | 40 | 59% |
| Investment Pay Back Period (years) | | | | 4,7 |
| Savings € | | | | 60,000 € |
| Fuel savings | | | | 6 |

Social Survey Results: increase of indoor comfort and rise of beneficiaries satisfaction



Министарство енергетике,
развоја и заштите
животне средине
Republike Srbije

Ministry of Energy,
Development and
Environmental Protection
of the Republic of Serbia



РЕПУБЛИКА СРБИЈА
АГЕНЦИЈА ЗА
ЕНЕРГЕТСКУ ЕФИКАСНОСТ
REPUBLIC OF SERBIA
ENERGY EFFICIENCY
AGENCY



ES „HEROJ IVAN MUKER“, SMEDEREVSKA PALANKA

| Area | Fuel type | Final Investment EUR | Civil Works | Mechanical Works |
|-------|-----------|----------------------|--|---------------------------|
| 5,588 | DH | 230,125 | Windows Replacement; Flat Roof Insulation | Thermocontroll, Balancing |



Savings

| ES Heroj Ivan Muker, Smederevska Palanka | | | | |
|--|--------------|-------------|--------------------|----------|
| Heated Area m2 | | | Final Investment € | €/m2 |
| 5,588 | | | 230,125 | 41,18 |
| Results | BEFORE WORKS | AFTER WORKS | Savings | |
| Annual consumption of energy for heating per m2 (kWh/m2) | 178 | 77 | 101 | 57% |
| Annual CO2 emission (t) | 49 | 21 | 28 | 57% |
| Investment Pay Back Period (years) | | | | 7,5 |
| Savings € | | | | 30,500 € |
| Fuel savings | | | | 3 |

Social Survey Results: increase of indoor comfort and rise of beneficiaries satisfaction



Министарство енергетике,
развоја и заштите
животне средине
Republike Srbije

Ministry of Energy,
Development and
Environmental Protection
of the Republic of Serbia



РЕПУБЛИКА СРБИЈА
АГЕНЦИЈА ЗА
ЕНЕРГЕТСКУ ЕФЕКАСНОСТ
REPUBLIC OF SERBIA
ENERGY EFFICIENCY
AGENCY



ES „OLGA MILOSEVIC“, SMEDREVSKA PALANKA

| Area | Fuel type | Final Investment EUR | Civil Works | Mechanical Works |
|-------|----------------|----------------------|--|--------------------------|
| 3,172 | Light Fuel Oil | 238,242 | Windows Replacement; Flat Roof Insulation | Thermocontrol, Balancing |



Savings

| ES Olga Milosevic, Smederevska Palanka | | | | |
|--|--------------|-------------|--------------------|----------|
| Heated Area m2 | | | Final Investment € | €/m2 |
| 3,172 | | | 238,242 | 75,11 |
| Results | BEFORE WORKS | AFTER WORKS | Savings | |
| Annual consumption of energy for heating per m2 (kWh/m2) | 227 | 108 | 119 | 52% |
| Annual CO2 emission (t) | 62 | 29 | 33 | 53% |
| Investment Pay Back Period (years) | | | | 8,5 |
| Savings € | | | | 28,000 € |
| Fuel savings | | | | 3 |



Министарство енергетике,
развоја и заштите
животне средине
Republike Srbije

Ministry of Energy,
Development and
Environmental Protection
of the Republic of Serbia



РЕПУБЛИКА СРБИЈА
АГЕНЦИЈА ЗА
ЕНЕРГЕТСКУ ЕФИКАСНОСТ
REPUBLIC OF SERBIA
ENERGY EFFICIENCY
AGENCY



Grammar School, Vrnjacka Banja

| Area | Fuel type | Final Investment EUR | Civil Works | Mechanical Works |
|-------|-----------|----------------------|--|--------------------------|
| 3,048 | Gas | 338,561 | Windows Replacement, Attic Insulation, Wall insulation | Thermocontrol, Balancing |



Savings

| Grammar School, Vrnjacka Banja | | | | |
|--|--------------|-------------|--------------------|----------|
| Heated Area m2 | | | Final Investment € | €/m2 |
| 3,048 | | | 338,561 | 111,08 |
| Results | BEFORE WORKS | AFTER WORKS | Savings | |
| Annual consumption of energy for heating per m2 (kWh/m2) | 233 | 103 | 130 | 56% |
| Annual CO2 emission (t) | 49 | 22 | 27 | 55% |
| Investment Pay Back Period (years) | | | | 18,7 |
| Savings € | | | | 18,000 € |
| Fuel savings | | | 2 | |

Social Survey Results: increase of indoor comfort and rise of beneficiaries satisfaction



Министарство енергетике,
развоја и заштите
животне средине
Republike Srbije

Ministry of Energy,
Development and
Environmental Protection
of the Republic of Serbia



РЕПУБЛИКА СРБИЈА
АГЕНЦИЈА ЗА
ЕНЕРГЕТСКУ ЕФЕКАСНОСТ
REPUBLIC OF SERBIA
ENERGY EFFICIENCY
AGENCY



Elementary School Vladislav Petkovic Dis, Grljan (Zajecar)

| Area | Fuel type | Final Investment EUR | Civil Works | Mechanical Works |
|-------|-----------|----------------------|--|--------------------------|
| 1,624 | Coal | 123,425 | Windows Replacement, Attic Insulation, Wall insulation | Thermocontrol, Balancing |



Savings

| ES Vladislav Petkovic Dis, Grljan | | | | |
|--|--------------|-------------|----------------------------------|--------------------------|
| Heated Area m2 | | | Final Investment € | €/m2 |
| 1,624 | | | 123,425 | 76,00 |
| Results | BEFORE WORKS | AFTER WORKS | Annual Savings - absolute values | Savings - percentage (%) |
| Annual consumption of energy for heating per m2 (kWh/m2) | 232 | 56 | 176 | 76% |
| Annual CO2 emission (t) | 68 | 16 | 52 | 77% |
| Investment Pay Back Period (years) | | | | 22,1 |
| Savings € | | | | 5,600 € |
| Fuel savings | | | | 1 |

Social Survey Results: increase of indoor comfort and rise of beneficiaries satisfaction



Министарство енергетике,
развоја и заштите
животне средине
Republike Srbije

Ministry of Energy,
Development and
Environmental Protection
of the Republic of Serbia



РЕПУБЛИКА СРБИЈА
АГЕНЦИЈА ЗА
ЕНЕРГЕТСКУ ЕФЕКАСНОСТ
REPUBLIC OF SERBIA
ENERGY EFFICIENCY
AGENCY





ES Aleksa Dejovic, Sevojno (Uzice)

| Area | Fuel type | Final Investment EUR | Civil Works | Mechanical Works |
|-------|-----------|----------------------|---|--------------------------|
| 3,466 | DH | 275,722 | Windows Replacement, Wall insulation | Thermocontrol, Balancing |



Savings

| ES Aleksa Dejovic, Sevojno (Uzice) | | | | |
|--|---|---|--------------------|----------|
| Heated Area m2 | | | Final Investment € | €/m2 |
| 3466 | | | 275,722 | 79,55 |
| Results | BEFORE WORKS | AFTER WORKS | Savings | |
| Annual consumption of energy for heating per m2 (kWh/m2) | 197 | 105 | 92 | 47% |
| Annual CO2 emission (t) | 57 | 31 | 26 | 46% |
| Investment Pay Back Period (years) | | | | 12,6 |
| Savings € | | | | 22,000 € |
| Fuel savings |  |  | 2 | |

Social Survey Results: increase of indoor comfort and rise of beneficiaries satisfaction



Министарство енергетике,
развоја и заштите
животне средине
Republike Srbije

Ministry of Energy,
Development and
Environmental Protection
of the Republic of Serbia



РЕПУБЛИКА СРБИЈА
АГЕНЦИЈА ЗА
ЕНЕРГЕТСКУ ЕФЕКАСНОСТ
REPUBLIC OF SERBIA
ENERGY EFFICIENCY
AGENCY



SEEP2 – Health Centres





Министарство енергетике,
развоја и заштите
животне средине
Republike Srbije

Ministry of Energy,
Development and
Environmental Protection
of the Republic of Serbia



РЕПУБЛИКА СРБИЈА
АГЕНЦИЈА ЗА
ЕНЕРГЕТСКУ ЕФИКАСНОСТ
REPUBLIC OF SERBIA
ENERGY EFFICIENCY
AGENCY



HEALTH CENTRE ARANDJELOVAC

| Area | Fuel type | Final Investment EUR | Civil Works | Mechanical Works |
|-------|-----------|----------------------|--|--------------------------|
| 6,137 | Gas | 329,181 | New PVC/Al Windows, Six Chambers, Triple Glazing | Thermocontrol, Balancing |



Savings

| Health Centre dr Dragisa Misovic, Cacak | | | | |
|--|--------------|-------------|--------------------|-----------|
| Heated Area m2 | | | Final Investment € | €/m2 |
| 13,400 | | | 392,650 | 29,30 |
| Results | BEFORE WORKS | AFTER WORKS | Savings | |
| Annual consumption of energy for heating per m2 (kWh/m2) | 406 | 235 | 171 | 42% |
| Annual CO2 emission (t) | 85 | 49 | 36 | 42% ↓ |
| Investment Pay Back Period (years) | | | | 4 |
| Savings € | | | | 103,000 € |
| Fuel savings | | | | 10 |

Social Survey Results: increase of indoor comfort and rise of beneficiaries satisfaction



Министарство енергетике,
развоја и заштите
животне средине
Republike Srbije

Ministry of Energy,
Development and
Environmental Protection
of the Republic of Serbia



РЕПУБЛИКА СРБИЈА
АГЕНЦИЈА ЗА
ЕНЕРГЕТСКУ ЕФЕКАСНОСТ
REPUBLIC OF SERBIA
ENERGY EFFICIENCY
AGENCY



HEALTH CENTRE KNJAZEVC

| Area | Fuel type | Final Investment EUR | Civil Works | Mechanical Works |
|-------|----------------|----------------------|---|-------------------|
| 6,560 | Light Fuel Oil | 240,370 | Sloped Roof Insulation, Wall Insulation | SEEP 1 – Retrofit |



Savings

| Health Centre Knjazevc | | | | |
|--|--------------|-------------|--------------------|----------|
| Heated Area m2 | | | Final Investment € | €/m2 |
| 6,560 | | | 240,370 | 36,64 |
| Results | BEFORE WORKS | AFTER WORKS | Savings | |
| Annual consumption of energy for heating per m2 (kWh/m2) | 124 | 100 | 24 | 19% |
| Annual CO2 emission (t) | 33 | 26 | 7 | 21% ↓ |
| Investment Pay Back Period (years) | | | | 10 |
| Savings € | | | | 13,000 € |
| Fuel savings | | | | 1 |

Social Survey Results: increase of indoor comfort and rise of beneficiaries satisfaction



Министарство енергетике,
развоја и заштите
животне средине
Republike Srbije

Ministry of Energy,
Development and
Environmental Protection
of the Republic of Serbia



РЕПУБЛИКА СРБИЈА
АГЕНЦИЈА ЗА
ЕНЕРГЕТСКУ ЕФЕКАСНОСТ
REPUBLIC OF SERBIA
ENERGY EFFICIENCY
AGENCY



HEALTH CENTRE SUBOTICA

| Area | Fuel type | Final Investment EUR | Civil Works | Mechanical Works |
|--------|-----------|----------------------|---------------------|--------------------------|
| 18,830 | DH | 673,539 | Windows Replacement | Thermocontrol, Balancing |



Savings

| Health Centre Subotica | | | | |
|--|--------------|-------------|--------------------|-----------|
| Heated Area m2 | | | Final Investment € | €/m2 |
| 18,830 | | | 673,539 | 35.77 |
| Results | BEFORE WORKS | AFTER WORKS | Savings | |
| Annual consumption of energy for heating per m2 (kWh/m2) | 231 | 141 | 90 | 39% |
| Annual CO2 emission (t) | 49 | 30 | 19 | 38% ↓ |
| Investment Pay Back Period (years) | | | | 6 |
| Savings € | | | | 120,000 € |
| Fuel savings | | | | 12 |

Social Survey Results: increase of indoor comfort and rise of beneficiaries satisfaction



Министарство енергетике,
развоја и заштите
животне средине
Republike Srbije

Ministry of Energy,
Development and
Environmental Protection
of the Republic of Serbia



РЕПУБЛИКА СРБИЈА
АГЕНЦИЈА ЗА
ЕНЕРГЕТСКУ ЕФИКАСНОСТ
REPUBLIC OF SERBIA
ENERGY EFFICIENCY
AGENCY



Health Centre dr Dragisa Misovic, Cacak

| Area | Fuel type | Final Investment EUR | Civil Works | Mechanical Works |
|--------|-----------|----------------------|---|--------------------------|
| 13,400 | Gas | 392,650 | Windows Replacement, Six Chambers, Triple Glazing | Thermocontrol, Balancing |



Savings

| Health Centre dr Dragisa Misovic, Cacak | | | | |
|--|--------------|-------------|--------------------|-----------|
| Heated Area m2 | | | Final Investment € | €/m2 |
| 13,400 | | | 392,650 | 29.30 |
| Results | BEFORE WORKS | AFTER WORKS | Savings | |
| Annual consumption of energy for heating per m2 (kWh/m2) | 406 | 235 | 171 | 42% |
| Annual CO2 emission (t) | 85 | 49 | 36 | 42% ↓ |
| Investment Pay Back Period (years) | | | | 4 |
| Savings € | | | | 103,000 € |
| Fuel savings | | | | 10 |

Social Survey Results: increase of indoor comfort and rise of beneficiaries satisfaction



Министарство енергетике,
развоја и заштите
животне средине
Republike Srbije

Ministry of Energy,
Development and
Environmental Protection
of the Republic of Serbia

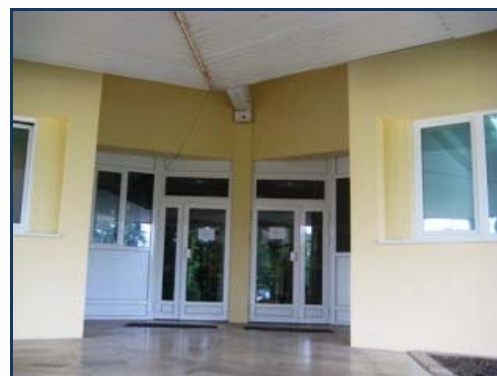


РЕПУБЛИКА СРБИЈА
АГЕНЦИЈА ЗА
ЕНЕРГЕТСКУ ЕФЕКАСНОСТ
REPUBLIC OF SERBIA
ENERGY EFFICIENCY
AGENCY



Special Hospital for Internal Diseases, Vrnjackska Banja

| Area | Fuel type | Final Investment EUR | Civil Works | Mechanical Works |
|-------|-----------|----------------------|--|--------------------------|
| 3,066 | Gas | 207,822 | Windows Replacement, Six Chambers, Triple Glazing; Attic Insulation; Wall Insulation | Thermocontrol, Balancing |



Savings

| Special Hospital for Internal Diseases, Vrnjackska Banja | | | | |
|--|--------------|-------------|--------------------|----------|
| Heated Area m2 | | | Final Investment € | €/m2 |
| 3,066 | | | 207,822 | 67.78 |
| Results | BEFORE WORKS | AFTER WORKS | Savings | |
| Annual consumption of energy for heating per m2 (kWh/m2) | 417 | 143 | 274 | 66% |
| Annual CO2 emission (t) | 114 | 39 | 75 | 66% |
| Investment Pay Back Period (years) | | | | 3 |
| Savings € | | | | 62,000 € |
| Fuel savings | | | | 6 |

Social Survey Results: increase of indoor comfort and rise of beneficiaries satisfaction



Министарство енергетике,
развоја и заштите
животне средине
Republike Srbije

Ministry of Energy,
Development and
Environmental Protection
of the Republic of Serbia



РЕПУБЛИКА СРБИЈА
АГЕНЦИЈА ЗА
ЕНЕРГЕТСКУ ЕФИКАСНОСТ
REPUBLIC OF SERBIA
ENERGY EFFICIENCY
AGENCY



HEALTH CENTRE JAGODINA

| Area | Fuel type | Final Investment EUR | Civil Works | Mechanical Works |
|--------|-----------|----------------------|---------------------|--|
| 15,119 | Gas | 162,235 | Windows Replacement | Reconstruction of Existing Mechanical Equipment and Piping; Installation of New Mechanical Equipment; Thermocontrol; Balancing |



Savings

| Health Centre Jagodina | | | | |
|--|--------------|-------------|--------------------|----------|
| Heated Area m2 | | | Final Investment € | €/m2 |
| 15,119 | | | 162,235 | 10.73 |
| Results | BEFORE WORKS | AFTER WORKS | Savings | |
| Annual consumption of energy for heating per m2 (kWh/m2) | 313 | 243 | 70 | 22% |
| Annual CO2 emission (t) | 66 | 51 | 15 | 23% ↓ |
| Investment Pay Back Period (years) | | | | 4 |
| Savings € | | | | 13,000 € |
| Fuel savings | | | | 1 |

Social Survey Results: increase of indoor comfort and rise of beneficiaries satisfaction



Министарство енергетике,
развоја и заштите
животне средине
Republike Srbije

Ministry of Energy,
Development and
Environmental Protection
of the Republic of Serbia



РЕПУБЛИКА СРБИЈА
АГЕНЦИЈА ЗА
ЕНЕРГЕТСКУ ЕФЕКАСНОСТ
REPUBLIC OF SERBIA
ENERGY EFFICIENCY
AGENCY



Health Centre Senta, Maternity Hospital

| Area | Fuel type | Final Investment EUR | Civil Works | Mechanical Works |
|-------|-----------|----------------------|--|---------------------------|
| 2,440 | DH | 161,234 | Windows Replacement, Six Chambers, Triple Glazing; Attic Insulation; Wall Insulation | Thermocontroll, Balancing |



Savings

| Health Centre Senta, Maternity Hospital | | | | |
|--|--------------|-------------|--------------------|----------|
| Heated Area m2 | | | Final Investment € | €/m2 |
| 2,440 | | | 161,234 | 66.08 |
| Results | BEFORE WORKS | AFTER WORKS | Savings | |
| Annual consumption of energy for heating per m2 (kWh/m2) | 305 | 101 | 204 | 67% |
| Annual CO2 emission (t) | 64 | 21 | 43 | 67% ↓ |
| Investment Pay Back Period (years) | | | | 5 |
| Savings € | | | | 36,000 € |
| Fuel savings | | | | 4 |

Social Survey Results: increase of indoor comfort and rise of beneficiaries satisfaction



Министарство енергетике,
развоја и заштите
животне средине
Republike Srbije

Ministry of Energy,
Development and
Environmental Protection
of the Republic of Serbia



РЕПУБЛИКА СРБИЈА
АГЕНЦИЈА ЗА
ЕНЕРГЕТСКУ ЕФИКАСНОСТ
REPUBLIC OF SERBIA
ENERGY EFFICIENCY
AGENCY



HEALTH CENTRE VRBAS

| Area | Fuel type | Final Investment EUR | Civil Works | Mechanical Works |
|--------|----------------|----------------------|---------------------|--------------------------|
| 12,814 | Heavy Fuel Oil | 455,078 | Windows Replacement | Thermocontrol, Balancing |



Savings

| Health Centre Vrbas | | | | |
|--|--------------|-------------|--------------------|----------|
| Heated Area m2 | | | Final Investment € | €/m2 |
| 12,814 | | | 455,078 | 35.51 |
| Results | BEFORE WORKS | AFTER WORKS | Savings | |
| Annual consumption of energy for heating per m2 (kWh/m2) | 263 | 142 | 121 | 46% |
| Annual CO2 emission (t) | 72 | 39 | 33 | 46% ↓ |
| Investment Pay Back Period (years) | | | | 9 |
| Savings € | | | | 50,000 € |
| Fuel savings | | | | 5 |

Social Survey Results: increase of indoor comfort and rise of beneficiaries satisfaction



Министарство енергетике,
развоја и заштите
животне средине
Republike Srbije

Ministry of Energy,
Development and
Environmental Protection
of the Republic of Serbia



РЕПУБЛИКА СРБИЈА
АГЕНЦИЈА ЗА
ЕНЕРГЕТСКУ ЕФЕКАСНОСТ
REPUBLIC OF SERBIA
ENERGY EFFICIENCY
AGENCY



Rehabilitation Institute "Selters", Mladenovac

| Area | Fuel type | Final Investment EUR | Civil Works | Mechanical Works |
|-------|----------------|----------------------|----------------------|--------------------------|
| 7,607 | Heavy Fuel Oil | 302,093 | Windows Replacement, | Thermocontrol, Balancing |



Savings

| Rehabilitation Institute "Selters", Mladenovac | | | | |
|--|--------------|-------------|--------------------|-----------|
| Heated Area m2 | | | Final Investment € | €/m2 |
| 7,607 | | | 302,093 | 39.71 |
| Results | BEFORE WORKS | AFTER WORKS | Savings | |
| Annual consumption of energy for heating per m2 (kWh/m2) | 401 | 212 | 189 | 47% |
| Annual CO2 emission (t) | 110 | 58 | 52 | 47% ↓ |
| Investment Pay Back Period (years) | | | | 3 |
| Savings € | | | | 100,000 € |
| Fuel savings | | | | 10 |

Social Survey Results: increase of indoor comfort and rise of beneficiaries satisfaction



Министарство енергетике,
развоја и заштите
животне средине
Republike Srbije

Ministry of Energy,
Development and
Environmental Protection
of the Republic of Serbia



РЕПУБЛИКА СРБИЈА
АГЕНЦИЈА ЗА
ЕНЕРГЕТСКУ ЕФИКАСНОСТ
REPUBLIC OF SERBIA
ENERGY EFFICIENCY
AGENCY




HEALTH CENTRE SURDULICA

| Area | Fuel type | Final Investment EUR | Civil Works | Mechanical Works |
|-------|-----------|----------------------|--|--------------------------|
| 1,798 | Coal | 168,651 | Windows Replacement; Flat Roof Insulation; Wall Insulation | Thermocontrol, Balancing |



Savings

| Health Centre Surdulica | | | | |
|--|--------------|-------------|--------------------|----------|
| Heated Area m2 | | | Final Investment € | €/m2 |
| 1,798 | | | 168,651 | 93.80 |
| Results | BEFORE WORKS | AFTER WORKS | Savings | |
| Annual consumption of energy for heating per m2 (kWh/m2) | 549 | 189 | 360 | 66% |
| Annual CO2 emission (t) | 158 | 55 | 103 | 65% ↑ |
| Investment Pay Back Period (years) | | | | 13 |
| Savings € | | | | 12,000 € |
| Fuel savings  | | | | 1 |

Social Survey Results: increase of indoor comfort and rise of beneficiaries satisfaction



Министарство енергетике,
развоја и заштите
животне средине
Republike Srbije

Ministry of Energy,
Development and
Environmental Protection
of the Republic of Serbia



РЕПУБЛИКА СРБИЈА
АГЕНЦИЈА ЗА
ЕНЕРГЕТСКУ ЕФИКАСНОСТ
REPUBLIC OF SERBIA
ENERGY EFFICIENCY
AGENCY



Clinical Centre Nis





Министарство енергетике,
развоја и заштите
животне средине
Republike Srbije

Ministry of Energy,
Development and
Environmental Protection
of the Republic of Serbia

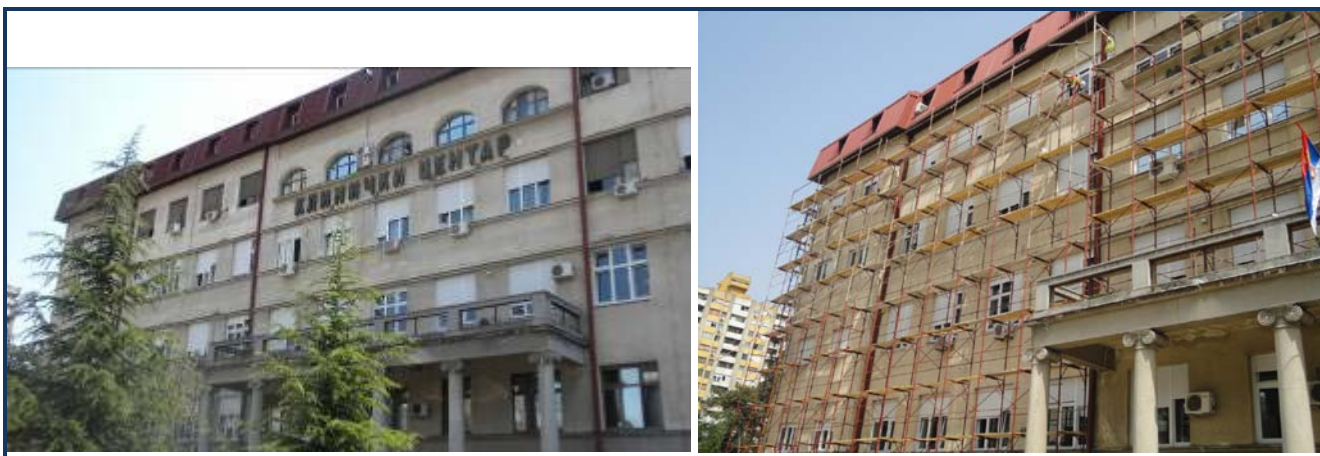


РЕПУБЛИКА СРБИЈА
АГЕНЦИЈА ЗА
ЕНЕРГЕТСКУ ЕФЕКАСНОСТ
REPUBLIC OF SERBIA
ENERGY EFFICIENCY
AGENCY



Clinical Centre Nis, SURGICAL CLINIC

| Area | Fuel type | Final Investment EUR | Civil Works | Mechanical Works |
|-------|-----------|----------------------|--|--------------------------|
| 8,836 | DH | 453,152 | Windows Replacement; Flat Roof Insulation; Wall Insulation | Thermocontrol, Balancing |



Savings

| Clinical Centre Nis, Surgical Clinic | | | | |
|---|--------------|-------------|--------------------|--------------------------------------|
| Gross Area m ² | | | Total Investment € | Specific Investment €/m ² |
| 8,836 | | | 453,152 | 51,28 |
| RESULTS | Before Works | After Works | Savings | |
| Annual energy consumption for heating gross area weighted (KWh/m ²) | 327 | 129 | 198 | 60% |
| Annual CO ₂ emission (t) | 95 | 37 | 58 | 61% |
| Investment Simple Payback Period (years) | | | | 9,2 |
| Annual savings (€) | | | | 50,000 |
| Annual fuel savings | | | | 5 |

Social Survey Results: increase of indoor comfort and rise of beneficiaries satisfaction



Министарство енергетике,
развоја и заштите
животне средине
Republike Srbije

Ministry of Energy,
Development and
Environmental Protection
of the Republic of Serbia



РЕПУБЛИКА СРБИЈА
АГЕНЦИЈА ЗА
ЕНЕРГЕТСКУ ЕФЕКАСНОСТ
REPUBLIC OF SERBIA
ENERGY EFFICIENCY
AGENCY



Clinical Centre Nis, NEPHROLOGY

| Area | Fuel type | Final Investment EUR | Civil Works | Mechanical Works |
|-------|-----------|----------------------|--|------------------|
| 2,827 | Coal | 82,225 | Windows Replacement; Attic Insulation | |



Savings

| Clinical Centre Nis, NEPHROLOGY | | | | |
|---|--------------|-------------|--------------------|------------------|
| Gross Area m ² | | | Final Investment € | €/m ² |
| 2,827 | | | 82,225 | 29,09 |
| Results | BEFORE WORKS | AFTER WORKS | Savings | |
| Annual consumption of energy for heating per m ² (kWh/m ²) | 459 | 216 | 243 | 53% |
| Annual CO ₂ emission (t) | 133 | 63 | 70 | 53% ↓ |
| Investment Pay Back Period (years) | | | | 6,1 |
| Savings € | | | | 13,000 € |
| Fuel savings | | | | 1 |

Social Survey Results: increase of indoor comfort and rise of beneficiaries satisfaction



Министарство енергетике,
развоја и заштите
животне средине
Republike Srbije

Ministry of Energy,
Development and
Environmental Protection
of the Republic of Serbia



РЕПУБЛИКА СРБИЈА
АГЕНЦИЈА ЗА
ЕНЕРГЕТСКУ ЕФЕКАСНОСТ
REPUBLIC OF SERBIA
ENERGY EFFICIENCY
AGENCY



Clinical Centre Nis, OPHTALMOLOGY

| Area | Fuel type | Final Investment EUR | Civil Works | Mechanical Works |
|------|-----------|----------------------|--|------------------|
| 894 | Coal | 37,464 | Windows Replacement; Attic Insulation | |



Savings

| Clinical Centre Nis, OPHTALMOLOGY | | | | |
|---|--------------|-------------|--------------------|------------------|
| Gross Area m ² | | | Final Investment € | €/m ² |
| 894 | | | 37,464 | 41,91 |
| Results | BEFORE WORKS | AFTER WORKS | Savings | |
| Annual consumption of energy for heating per m ² (kWh/m ²) | 763 | 375 | 388 | 51% |
| Annual CO ₂ emission (t) | 221 | 108 | 113 | 51% ↓ |
| Investment Pay Back Period (years) | | | | 5,5 |
| Savings € | | | | 7,000 € |
| Fuel savings | | | | |

Social Survey Results: increase of indoor comfort and rise of beneficiaries satisfaction



Министарство енергетике,
развоја и заштите
животне средине
Republike Srbije

Ministry of Energy,
Development and
Environmental Protection
of the Republic of Serbia



РЕПУБЛИКА СРБИЈА
АГЕНЦИЈА ЗА
ЕНЕРГЕТСКУ ЕФИКАСНОСТ
REPUBLIC OF SERBIA
ENERGY EFFICIENCY
AGENCY



Clinical Centre Nis, RADIOLOGY, ROENTGEN and MAGNETIC RESONANCE

| Area | Fuel type | Final Investment EUR | Civil Works | Mechanical Works |
|------|-----------|----------------------|------------------|--------------------------|
| 595 | DH | 7,366 | Attic Insulation | Thermocontrol, Balancing |



Front Side



Attic Insulation



HVAC Works

Savings

| Clinical Centre Nis, RADIOLOGY | | | | |
|---|--------------|-------------|--------------------|------------------|
| Gross Area m ² | | | Final Investment € | €/m ² |
| 595 | | | 7,366 | 12,38 |
| Results | BEFORE WORKS | AFTER WORKS | Savings | |
| Annual consumption of energy for heating per m ² (kWh/m ²) | 234 | 141 | 93 | 40% |
| Annual CO ₂ emission (t) | 68 | 41 | 27 | 40% ↓ |
| Investment Pay Back Period (years) | | | | 4,7 |
| Savings € | | | | |
| Fuel savings | | | | - |

Social Survey Results: increase of indoor comfort and rise of beneficiaries satisfaction



Министарство енергетике,
развоја и заштите
животне средине
Republike Srbije

Ministry of Energy,
Development and
Environmental Protection
of the Republic of Serbia



РЕПУБЛИКА СРБИЈА
АГЕНЦИЈА ЗА
ЕНЕРГЕТСКУ ЕФЕКАСНОСТ
REPUBLIC OF SERBIA
ENERGY EFFICIENCY
AGENCY



Clinical Centre Nis, ADMINISTRATIVE BUILDING

| Area | Fuel type | Final Investment EUR | Civil Works | Mechanical Works |
|-------|-----------|----------------------|---------------------|------------------|
| 3,235 | Coal | 69,836 | Windows Replacement | |



Savings

| Clinical Centre Nis, ADMINISTRATIVE BUILDING | | | | |
|---|--------------|-------------|--------------------|------------------|
| Gross Area m ² | | | Final Investment € | €/m ² |
| 3,235 | | | 69,836 | 21.59 |
| Results | BEFORE WORKS | AFTER WORKS | Savings | |
| Annual consumption of energy for heating per m ² (kWh/m ²) | 384 | 328 | 56 | 15% |
| Annual CO ₂ emission (t) | 78 | 66 | 12 | 15% ↓ |
| Investment Pay Back Period (years) | | | | 7.1 |
| Savings € | | | | 10,000 € |
| Fuel savings | | | | 1 |

Social Survey Results: increase of indoor comfort and rise of beneficiaries satisfaction



Министарство енергетике,
развоја и заштите
животне средине
Republike Srbije

Ministry of Energy,
Development and
Environmental Protection
of the Republic of Serbia



РЕПУБЛИКА СРБИЈА
АГЕНЦИЈА ЗА
ЕНЕРГЕТСКУ ЕФЕКТИВНОСТ
REPUBLIC OF SERBIA
ENERGY EFFICIENCY
AGENCY



Clinical Centre Nis, CENTRAL KITCHEN

| Area | Fuel type | Final Investment EUR | Civil Works | Mechanical Works |
|-------|-----------|----------------------|---|------------------|
| 1,193 | Coal | 60,547 | Windows Replacement; Wall Insulation | |



Savings

| Clinical Centre Nis, CENTRAL KITCHEN | | | | |
|---|--------------|-------------|--------------------|------------------|
| Gross Area m ² | | | Final Investment € | €/m ² |
| 1,193 | | | 60,547 | 50.75 |
| Results | BEFORE WORKS | AFTER WORKS | Savings | |
| Annual consumption of energy for heating per m ² (kWh/m ²) | 150 | 85 | 66 | 44% |
| Annual CO ₂ emission (t) | 43 | 24 | 19 | 44% ↓ |
| Investment Pay Back Period (years) | | | | 39.5 |
| Savings € | | | | |
| Fuel savings | | | | - |

Social Survey Results: increase of indoor comfort and rise of beneficiaries satisfaction



Министарство енергетике,
развоја и заштите
животне средине
Republike Srbije

Ministry of Energy,
Development and
Environmental Protection
of the Republic of Serbia



РЕПУБЛИКА СРБИЈА
АГЕНЦИЈА ЗА
ЕНЕРГЕТСКУ ЕФИКАСНОСТ
REPUBLIC OF SERBIA
ENERGY EFFICIENCY
AGENCY



Clinical Centre Nis, DERMATOLOGY CLINIC

| Area | Fuel type | Final Investment EUR | Civil Works | Mechanical Works |
|------|-----------|----------------------|---------------------|--------------------------|
| 740 | DH | 24,015 | Windows Replacement | Thermocontrol, Balancing |



Savings

| Clinical Centre Nis, DERMATOLOGY CLINIC | | | | |
|---|--------------|-------------|--------------------|------------------|
| Gross Area m ² | | | Final Investment € | €/m ² |
| 740 | | | 24,015 | 32.45 |
| Results | BEFORE WORKS | AFTER WORKS | Savings | |
| Annual consumption of energy for heating per m ² (kWh/m ²) | 409 | 295 | 114 | 28% |
| Annual CO ₂ emission (t) | 118 | 85 | 33 | 28% ↓ |
| Investment Pay Back Period (years) | | | | 10.1 |
| Savings € | | | | |
| Fuel savings | | | | - |

Social Survey Results: increase of indoor comfort and rise of beneficiaries satisfaction



Министарство енергетике,
развоја и заштите
животне средине
Republike Srbije

Ministry of Energy,
Development and
Environmental Protection
of the Republic of Serbia



РЕПУБЛИКА СРБИЈА
АГЕНЦИЈА ЗА
ЕНЕРГЕТСКУ ЕФИКАСНОСТ
REPUBLIC OF SERBIA
ENERGY EFFICIENCY
AGENCY



Clinical Centre Nis, ENDOCRINOLOGY, Day Hospital, Nuclear Medicine (Oncology)

| Area | Fuel type | Final Investment EUR | Civil Works | Mechanical Works |
|------|-----------|----------------------|--|------------------|
| 460 | Coal | 31,605 | Windows Replacement; Attic Insulation | |



Savings

| Clinical Centre Nis, ENDOCRINOLOGY | | | | |
|---|--------------|-------------|--------------------|------------------|
| Gross Area m ² | | | Final Investment € | €/m ² |
| 460 | | | 31,605 | 68.71 |
| Results | BEFORE WORKS | AFTER WORKS | Savings | |
| Annual consumption of energy for heating per m ² (kWh/m ²) | 653 | 313 | 340 | 52% |
| Annual CO ₂ emission (t) | 188 | 90 | 98 | 52% ↓ |
| Investment Pay Back Period (years) | | | | 10.3 |
| Savings € | | | | |
| Fuel savings | | | | - |

Social Survey Results: increase of indoor comfort and rise of beneficiaries satisfaction



Министарство енергетике,
развоја и заштите
животне средине
Republike Srbije

Ministry of Energy,
Development and
Environmental Protection
of the Republic of Serbia

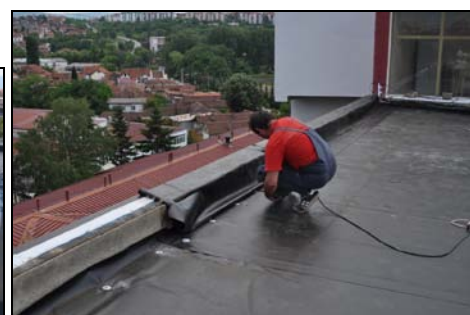
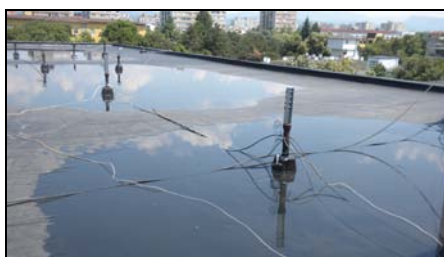


РЕПУБЛИКА СРБИЈА
АГЕНЦИЈА ЗА
ЕНЕРГЕТСКУ ЕФЕКАСНОСТ
REPUBLIC OF SERBIA
ENERGY EFFICIENCY
AGENCY



Clinical Centre Nis, GYNECOLOGY

| Area | Fuel type | Final Investment EUR | Civil Works | Mechanical Works |
|-------|-----------|----------------------|----------------------|------------------|
| 5,351 | Coal | 61,135 | Flat Roof Insulation | |



Savings

| Clinical Centre Nis, GYNECOLOGY | | | | |
|---|--------------|-------------|--------------------|------------------|
| Gross Area m ² | | | Final Investment € | €/m ² |
| 5,351 | | | 61,135 | 11.42 |
| Results | BEFORE WORKS | AFTER WORKS | Savings | |
| Annual consumption of energy for heating per m ² (kWh/m ²) | 187 | 171 | 16 | 9% |
| Annual CO ₂ emission (t) | 54 | 50 | 5 | 9% ↓ |
| Investment Pay Back Period (years) | | | | 35.5 |
| Savings € | | | | |
| Fuel savings | | | | - |

Social Survey Results: increase of indoor comfort and rise of beneficiaries satisfaction



Министарство енергетике,
развоја и заштите
животне средине
Republike Srbije

Ministry of Energy,
Development and
Environmental Protection
of the Republic of Serbia



РЕПУБЛИКА СРБИЈА
АГЕНЦИЈА ЗА
ЕНЕРГЕТСКУ ЕФЕКТИВНОСТ
REPUBLIC OF SERBIA
ENERGY EFFICIENCY
AGENCY





Clinical Centre Nis, CLINIC FOR INTERNAL DISEASES

| Area | Fuel type | Final Investment EUR | Civil Works | Mechanical Works |
|-------|-----------|----------------------|--|--------------------------|
| 5,205 | Coal | 140,223 | Windows Replacement; Attic Insulation | Thermocontrol, Balancing |



Savings

| Clinical Centre Nis, CLINIC FOR INTERNAL DISEASES | | | | |
|---|---|---|--------------------|------------------|
| Gross Area m ² | | | Final Investment € | €/m ² |
| 5,205 | | | 140,223 | 26.94 |
| Results | BEFORE WORKS | AFTER WORKS | Savings | |
| Annual consumption of energy for heating per m ² (kWh/m ²) | 392 | 181 | 211 | 54% |
| Annual CO ₂ emission (t) | 114 | 52 | 62 | 54% ↓ |
| Investment Pay Back Period (years) | | | | 6.5 |
| Savings € | | | | 20,000 € |
| Fuel savings |  |  | 2 | |

Social Survey Results: increase of indoor comfort and rise of beneficiaries satisfaction



Министарство енергетике,
развоја и заштите
животне средине
Republike Srbije

Ministry of Energy,
Development and
Environmental Protection
of the Republic of Serbia



РЕПУБЛИКА СРБИЈА
АГЕНЦИЈА ЗА
ЕНЕРГЕТСКУ ЕФЕКТИВНОСТ
REPUBLIC OF SERBIA
ENERGY EFFICIENCY
AGENCY



Clinical Centre Nis, JANITOR BOOTH

| Area | Fuel type | Final Investment EUR | Civil Works | Mechanical Works |
|------|-------------|----------------------|--|------------------|
| 128 | Electricity | 19,690 | Windows Replacement; Attic Insulation; Wall Insulation | |



Savings

| Clinical Centre Nis, JANITOR BOOTH | | | | |
|---|--------------|-------------|--------------------|------------------|
| Gross Area m ² | | | Final Investment € | €/m ² |
| 128 | | | 19,690 | 153.83 |
| Results | BEFORE WORKS | AFTER WORKS | Savings | |
| Annual consumption of energy for heating per m ² (kWh/m ²) | 316 | 115 | 201 | 64% |
| Annual CO ₂ emission (t) | 160 | 57 | 104 | 65% ↓ |
| Investment Pay Back Period (years) | | | | 13.0 |
| Savings € | | | | |
| Fuel savings | | | | - |

Social Survey Results: increase of indoor comfort and rise of beneficiaries satisfaction



Министарство енергетике,
развоја и заштите
животне средине
Republike Srbije

Ministry of Energy,
Development and
Environmental Protection
of the Republic of Serbia



РЕПУБЛИКА СРБИЈА
АГЕНЦИЈА ЗА
ЕНЕРГЕТСКУ ЕФИКАСНОСТ
REPUBLIC OF SERBIA
ENERGY EFFICIENCY
AGENCY



Clinical Centre Nis, LAUNDRY

| Area | Fuel type | Final Investment EUR | Civil Works | Mechanical Works |
|------|-----------|----------------------|---|------------------|
| 875 | Coal | 50,370 | Windows Replacement; Wall Insulation | |



Savings

| Clinical Centre Nis, LAUNDRY | | | | |
|---|--------------|-------------|--------------------|------------------|
| Gross Area m ² | | | Final Investment € | €/m ² |
| 875 | | | 50,370 | 57.57 |
| Results | BEFORE WORKS | AFTER WORKS | Savings | |
| Annual consumption of energy for heating per m ² (kWh/m ²) | 158 | 92 | 66 | 42% |
| Annual CO ₂ emission (t) | 45 | 26 | 19 | 42% ↓ |
| Investment Pay Back Period (years) | | | | 45.0 |
| Savings € | | | | |
| Fuel savings | | | | - |

Social Survey Results: increase of indoor comfort and rise of beneficiaries satisfaction



Министарство енергетике,
развоја и заштите
животне средине
Republike Srbije

Ministry of Energy,
Development and
Environmental Protection
of the Republic of Serbia



РЕПУБЛИКА СРБИЈА
АГЕНЦИЈА ЗА
ЕНЕРГЕТСКУ ЕФЕКТИВНОСТ
REPUBLIC OF SERBIA
ENERGY EFFICIENCY
AGENCY



Clinical Centre Nis, PHYSICAL MEDICINE and NEUROLOGY

| Area | Fuel type | Final Investment EUR | Civil Works | Mechanical Works |
|-------|-----------|----------------------|---|------------------|
| 4,775 | Coal | 345,512 | Windows Replacement; Wall Insulation | |



Savings

| Clinical Centre Nis, PHYSICAL MEDICINE and NEUROLOGY | | | | |
|---|--------------|-------------|--------------------|------------------|
| Gross Area m ² | | | Final Investment € | €/m ² |
| 4,755 | | | 345,512 | 72.66 |
| Results | BEFORE WORKS | AFTER WORKS | Savings | |
| Annual consumption of energy for heating per m ² (kWh/m ²) | 447 | 149 | 298 | 67% |
| Annual CO ₂ emission (t) | 130 | 43 | 87 | 67% ↓ |
| Investment Pay Back Period (years) | | | | 12.0 |
| Savings € | | | | 30,000 € |
| Fuel savings | | | | 3 |

Social Survey Results: increase of indoor comfort and rise of beneficiaries satisfaction



Министарство енергетике,
развоја и заштите
животне средине
Republike Srbije

Ministry of Energy,
Development and
Environmental Protection
of the Republic of Serbia



РЕПУБЛИКА СРБИЈА
АГЕНЦИЈА ЗА
ЕНЕРГЕТСКУ ЕФЕКТИВНОСТ
REPUBLIC OF SERBIA
ENERGY EFFICIENCY
AGENCY



Clinical Centre Nis, CHILDREN CLINIC

| Area | Fuel type | Final Investment EUR | Civil Works | Mechanical Works |
|-------|-----------|----------------------|---------------------|--------------------------|
| 5,882 | DH | 276,657 | Windows Replacement | Thermocontrol, Balancing |



Savings

| Clinical Centre Nis, CHILDREN CLINIC | | | | |
|---|--------------|-------------|--------------------|------------------|
| Gross Area m ² | | | Final Investment € | €/m ² |
| 5,882 | | | 276,657 | 47.03 |
| Results | BEFORE WORKS | AFTER WORKS | Savings | |
| Annual consumption of energy for heating per m ² (kWh/m ²) | 380 | 155 | 226 | 59% |
| Annual CO ₂ emission (t) | 110 | 45 | 65 | 59% ↓ |
| Investment Pay Back Period (years) | | | | 7.4 |
| Savings € | | | | 30,000 € |
| Fuel savings | | | | 3 |

Social Survey Results: increase of indoor comfort and rise of beneficiaries satisfaction



Министарство енергетике,
развоја и заштите
животне средине
Republike Srbije

Ministry of Energy,
Development and
Environmental Protection
of the Republic of Serbia



РЕПУБЛИКА СРБИЈА
АГЕНЦИЈА ЗА
ЕНЕРГЕТСКУ ЕФЕКТИВНОСТ
REPUBLIC OF SERBIA
ENERGY EFFICIENCY
AGENCY



Clinical Centre Nis, CLINIC FOR INFECTIVE DISEASES

| Area | Fuel type | Final Investment EUR | Civil Works | Mechanical Works |
|-------|-----------|----------------------|--|------------------|
| 3,776 | Coal | 160,083 | Windows Replacement; Flat Roof Insulation | |



Savings

| Clinical Centre Nis, CLINIC FOR INFECTIVE DISEASES | | | | |
|---|--------------|-------------|--------------------|------------------|
| Gross Area m ² | | | Final Investment € | €/m ² |
| 3,776 | | | 160,083 | 42.51 |
| Results | BEFORE WORKS | AFTER WORKS | Savings | |
| Annual consumption of energy for heating per m ² (kWh/m ²) | 558 | 203 | 355 | 64% |
| Annual CO ₂ emission (t) | 162 | 59 | 103 | 64% ↓ |
| Investment Pay Back Period (years) | | | | 6.0 |
| Savings € | | | | 26,000 € |
| Fuel savings | | | | 3 |

Social Survey Results: increase of indoor comfort and rise of beneficiaries satisfaction



Министарство енергетике,
развоја и заштите
животне средине
Republike Srbije

Ministry of Energy,
Development and
Environmental Protection
of the Republic of Serbia



РЕПУБЛИКА СРБИЈА
АГЕНЦИЈА ЗА
ЕНЕРГЕТСКУ ЕФЕКЛНОСТ
REPUBLIC OF SERBIA
ENERGY EFFICIENCY
AGENCY



Clinical Centre Nis, MENTAL HEALTH INSTITUTE

| Area | Fuel type | Final Investment EUR | Civil Works | Mechanical Works |
|-------|-----------|----------------------|--|------------------|
| 2,208 | Coal | 160,736 | Windows Replacement; Sloped Roof Insulation | |



Savings

| Clinical Centre Nis, MENTAL HEALTH INSTITUTE | | | | |
|---|--------------|-------------|--------------------|------------------|
| Gross Area m ² | | | Final Investment € | €/m ² |
| 2,208 | | | 160,736 | 72.80 |
| Results | BEFORE WORKS | AFTER WORKS | Savings | |
| Annual consumption of energy for heating per m ² (kWh/m ²) | 579 | 308 | 271 | 47% |
| Annual CO ₂ emission (t) | 168 | 90 | 79 | 47% ↓ |
| Investment Pay Back Period (years) | | | | 14.0 |
| Savings € | | | | 12,000 € |
| Fuel savings | | | | 1 |

Social Survey Results: increase of indoor comfort and rise of beneficiaries satisfaction



Министарство енергетике,
развоја и заштите
животне средине
Републике Србије

Ministry of Energy,
Development and
Environmental Protection
of the Republic of Serbia



РЕПУБЛИКА СРБИЈА
АГЕНЦИЈА ЗА
ЕНЕРГЕТСКУ ЕФЕКЛНОСТ
REPUBLIC OF SERBIA
ENERGY EFFICIENCY
AGENCY



Clinical Centre Nis, PATHOLOGY

| Area | Fuel type | Final Investment EUR | Civil Works | Mechanical Works |
|-------|-----------|----------------------|--------------------------------------|--------------------------|
| 2,927 | Coal | 184,156 | Windows Replacement, Wall Insulation | Thermocontrol, Balancing |



Savings

| Clinical Centre Nis, PATHOLOGY | | | | |
|---|--------------|-------------|--------------------|------------------|
| Gross Area m ² | | | Final Investment € | €/m ² |
| 2,927 | | | 184,156 | 62.92 |
| Results | BEFORE WORKS | AFTER WORKS | Savings | |
| Annual consumption of energy for heating per m ² (kWh/m ²) | 303 | 119 | 184 | 61% |
| Annual CO ₂ emission (t) | 88 | 34 | 54 | 61% ↓ |
| Investment Pay Back Period (years) | | | | 17.5 |
| Savings € | | | | 10,000 € |
| Fuel savings | | | | 1 |

Social Survey Results: increase of indoor comfort and rise of beneficiaries satisfaction



Министарство енергетике,
развоја и заштите
животне средине
Republike Srbije

Ministry of Energy,
Development and
Environmental Protection
of the Republic of Serbia



РЕПУБЛИКА СРБИЈА
АГЕНЦИЈА ЗА
ЕНЕРГЕТСКУ ЕФЕКТИВНОСТ
REPUBLIC OF SERBIA
ENERGY EFFICIENCY
AGENCY



Clinical Centre Nis, ORL

| Area | Fuel type | Final Investment EUR | Civil Works | Mechanical Works |
|-------|-----------|----------------------|---|--------------------------|
| 1,819 | Coal | 164,982 | Windows Replacemen, Sloped Roof Insulation, Wall Insulation | Thermocontrol, Balancing |



Savings

| Clinical Centre Nis, ORL | | | | |
|---|--------------|-------------|--------------------|------------------|
| Gross Area m ² | | | Final Investment € | €/m ² |
| 1,819 | | | 164,982 | 90.70 |
| Results | BEFORE WORKS | AFTER WORKS | Savings | |
| Annual consumption of energy for heating per m ² (kWh/m ²) | 401 | 117 | 284 | 71% |
| Annual CO ₂ emission (t) | 117 | 34 | 83 | 71% ↓ |
| Investment Pay Back Period (years) | | | | 16.0 |
| Savings € | | | | 10,000 € |
| Fuel savings | | | | 1 |

Social Survey Results: increase of indoor comfort and rise of beneficiaries satisfaction



Министарство енергетике,
развоја и заштите
животне средине
Republike Srbije

Ministry of Energy,
Development and
Environmental Protection
of the Republic of Serbia



РЕПУБЛИКА СРБИЈА
АГЕНЦИЈА ЗА
ЕНЕРГЕТСКУ ЕФЕКТИВНОСТ
REPUBLIC OF SERBIA
ENERGY EFFICIENCY
AGENCY



Clinical Centre Nis, ONCOLOGY - New Building

| Area | Fuel type | Final Investment EUR | Civil Works | Mechanical Works |
|------|-----------|----------------------|-------------------------|--------------------------|
| 985 | Coal | 5,241 | Partial Wall Insulation | Thermocontrol, Balancing |



Savings

| Clinical Centre Nis, ONCOLOGY, New Building | | | | |
|---|--------------|-------------|--------------------|------------------|
| Gross Area m ² | | | Final Investment € | €/m ² |
| 985 | | | 5,241 | 5.32 |
| Results | BEFORE WORKS | AFTER WORKS | Savings | |
| Annual consumption of energy for heating per m ² (kWh/m ²) | 214 | 180 | 34 | 16% |
| Annual CO ₂ emission (t) | 56 | 48 | 9 | 15% ↓ |
| Investment Pay Back Period (years) | | | | 2.0 |
| Savings € | | | | |
| Fuel savings | | | | - |

Social Survey Results: increase of indoor comfort and rise of beneficiaries satisfaction



Министарство енергетике,
развоја и заштите
животне средине
Republike Srbije

Ministry of Energy,
Development and
Environmental Protection
of the Republic of Serbia



РЕПУБЛИКА СРБИЈА
АГЕНЦИЈА ЗА
ЕНЕРГЕТСКУ ЕФИКАСНОСТ
REPUBLIC OF SERBIA
ENERGY EFFICIENCY
AGENCY



SEEP2 – Social Care Institutions





Министарство енергетике,
развоја и заштите
животне средине
Republike Srbije

Ministry of Energy,
Development and
Environmental Protection
of the Republic of Serbia



РЕПУБЛИКА СРБИЈА
АГЕНЦИЈА ЗА
ЕНЕРГЕТСКУ ЕФЕКАСНОСТ
REPUBLIC OF SERBIA
ENERGY EFFICIENCY
AGENCY



Institute for Children and Adolescents, Kulina

| Area | Fuel type | Final Investment EUR | Civil Works | Mechanical Works |
|-------|----------------|----------------------|---------------------|--------------------------|
| 3,958 | Light Fuel Oil | 144,101 | Windows Replacement | Thermocontrol, Balancing |



Savings

| Institute for Children and Adolescents, Kulina | | | | |
|--|--------------|-------------|--------------------|----------|
| Heated Area m2 | | | Final Investment € | €/m2 |
| 3,958 | | | 144,101 | 36,41 |
| Results | BEFORE WORKS | AFTER WORKS | Savings | |
| Annual consumption of energy for heating per m2 (kWh/m2) | 185 | 93 | 92 | 50% |
| Annual CO2 emission (t) | 48 | 24 | 24 | 50% |
| Investment Pay Back Period (years) | | | | 4,8 |
| Savings € | | | | 30,000 € |
| Fuel savings | | | | 3 |

Social Survey Results: increase of indoor comfort and rise of beneficiaries satisfaction



Министарство енергетике,
развоја и заштите
животне средине
Republike Srbije

Ministry of Energy,
Development and
Environmental Protection
of the Republic of Serbia



РЕПУБЛИКА СРБИЈА
АГЕНЦИЈА ЗА
ЕНЕРГЕТСКУ ЕФИКАСНОСТ
REPUBLIC OF SERBIA
ENERGY EFFICIENCY
AGENCY



Institute for Adults "Male pcelice", Kragujevac

| Area | Fuel type | Final Investment EUR | Civil Works | Mechanical Works |
|-------|---------------------|----------------------|---------------------------------------|--------------------------|
| 1,886 | Heavy fuel Oil/Coal | 79,978 | Windows Replacement, Attic Insulation | Thermocontrol, Balancing |



Savings

| Institute for Adults "Male pcelice", Kragujevac | | | | |
|--|--------------|-------------|--------------------|---------|
| Heated Area m2 | | | Final Investment € | €/m2 |
| 1,886 | | | 79,978 | 42,41 |
| Results | BEFORE WORKS | AFTER WORKS | Savings | |
| Annual consumption of energy for heating per m2 (kWh/m2) | 336 | 162 | 174 | 52% |
| Annual CO2 emission (t) | 99 | 48 | 51 | 52% |
| Investment Pay Back Period (years) | | | | 11,3 |
| Savings € | | | | 7,100 € |
| Fuel savings | | | | 1 |

Social Survey Results: increase of indoor comfort and rise of beneficiaries satisfaction



Министарство енергетике,
развоја и заштите
животне средине
Republike Srbije

Ministry of Energy,
Development and
Environmental Protection
of the Republic of Serbia



РЕПУБЛИКА СРБИЈА
АГЕНЦИЈА ЗА
ЕНЕРГЕТСКУ ЕФЕКАСНОСТ
REPUBLIC OF SERBIA
ENERGY EFFICIENCY
AGENCY



Institute for Blind People "Zbrinjavanje", Pancevo

| Area | Fuel type | Final Investment EUR | Civil Works | Mechanical Works |
|-------|----------------|----------------------|--|--|
| 2,146 | Light Fuel Oil | 172,694 | Windows Replacement, Wall Insulation, Attic Insulation | Thermocontrol, Balancing, Boiler Room Reconstruction |



Savings

| Institute for Blind People "Zbrinjavanje", Pancevo | | | | |
|--|--------------|-------------|--------------------|----------|
| Heated Area m2 | | | Final Investment € | €/m2 |
| 2,146 | | | 172,694 | 80,47 |
| Results | BEFORE WORKS | AFTER WORKS | Savings | |
| Annual consumption of energy for heating per m2 (kWh/m2) | 349 | 189 | 160 | 46% |
| Annual CO2 emission (t) | 93 | 48 | 45 | 48% |
| Investment Pay Back Period (years) | | | | 7,5 |
| Savings € | | | | 23,000 € |
| Fuel savings | | | | 2 |

Social Survey Results: increase of indoor comfort and rise of beneficiaries satisfaction



Министарство енергетике,
развоја и заштите
животне средине
Republike Srbije

Ministry of Energy,
Development and
Environmental Protection
of the Republic of Serbia



РЕПУБЛИКА СРБИЈА
АГЕНЦИЈА ЗА
ЕНЕРГЕТСКУ ЕФЕКАСНОСТ
REPUBLIC OF SERBIA
ENERGY EFFICIENCY
AGENCY



Institute for Children and Adolescents, Veternik

| Area | Fuel type | Final Investment EUR | Civil Works | Mechanical Works |
|-------|-----------|----------------------|--|--------------------------|
| 2,740 | GAS | 22,848 | Windows Replacement, Attic Insulation, Wall Insulation | Thermocontrol, Balancing |



Savings

| Institute for Children and Adolescents, Veternik | | | | |
|--|--------------|-------------|--------------------|---------|
| Heated Area m2 | | | Final Investment € | €/m2 |
| 2,740 | | | 22,848 | 8,34 |
| Results | BEFORE WORKS | AFTER WORKS | Savings | |
| Annual consumption of energy for heating per m2 (kWh/m2) | 349 | 189 | 161 | 46% |
| Annual CO2 emission (t) | 72 | 39 | 33 | 45% |
| Investment Pay Back Period (years) | | | | 11,0 |
| Savings € | | | | 2,000 € |

Social Survey Results: increase of indoor comfort and rise of beneficiaries satisfaction



Министарство енергетике,
развоја и заштите
животне средине
Republike Srbije

Ministry of Energy,
Development and
Environmental Protection
of the Republic of Serbia



РЕПУБЛИКА СРБИЈА
АГЕНЦИЈА ЗА
ЕНЕРГЕТСКУ ЕФЕКАСНОСТ
REPUBLIC OF SERBIA
ENERGY EFFICIENCY
AGENCY



Institute for Adults, Tutin

| Area | Fuel type | Final Investment EUR | Civil Works | Mechanical Works |
|-------|---------------|----------------------|---------------------------------------|--------------------------|
| 5,446 | Light fuel oi | 42,824 | Windows Replacement, Attic Insulation | Thermocontrol, Balancing |



Savings

| Institute for Adults, Tutin | | | | |
|--|--------------|-------------|--------------------|----------|
| Heated Area m2 | | | Final Investment € | €/m2 |
| 5,446 | | | 42,824 | 7,86 |
| Results | BEFORE WORKS | AFTER WORKS | Savings | |
| Annual consumption of energy for heating per m2 (kWh/m2) | 287 | 204 | 83 | 29% |
| Annual CO2 emission (t) | 79 | 56 | 23 | 29% |
| Investment Pay Back Period (years) | | | | 1,8 |
| Savings € | | | | 25,000 € |
| Fuel savings | | | | 3 |

Social Survey Results: increase of indoor comfort and rise of beneficiaries satisfaction