

Daniel Montalvo, European Environment Agency

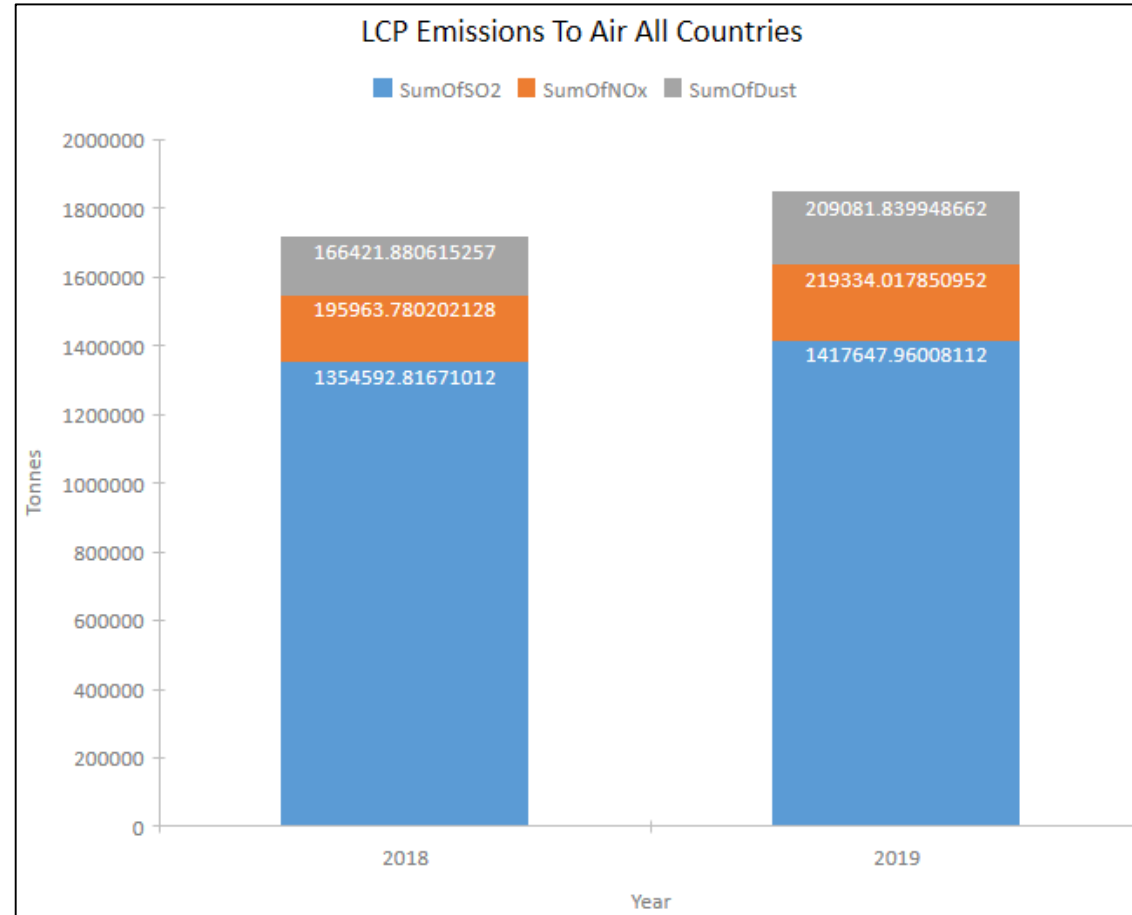
Implementation of the LCP Directive

Update on reporting of emissions

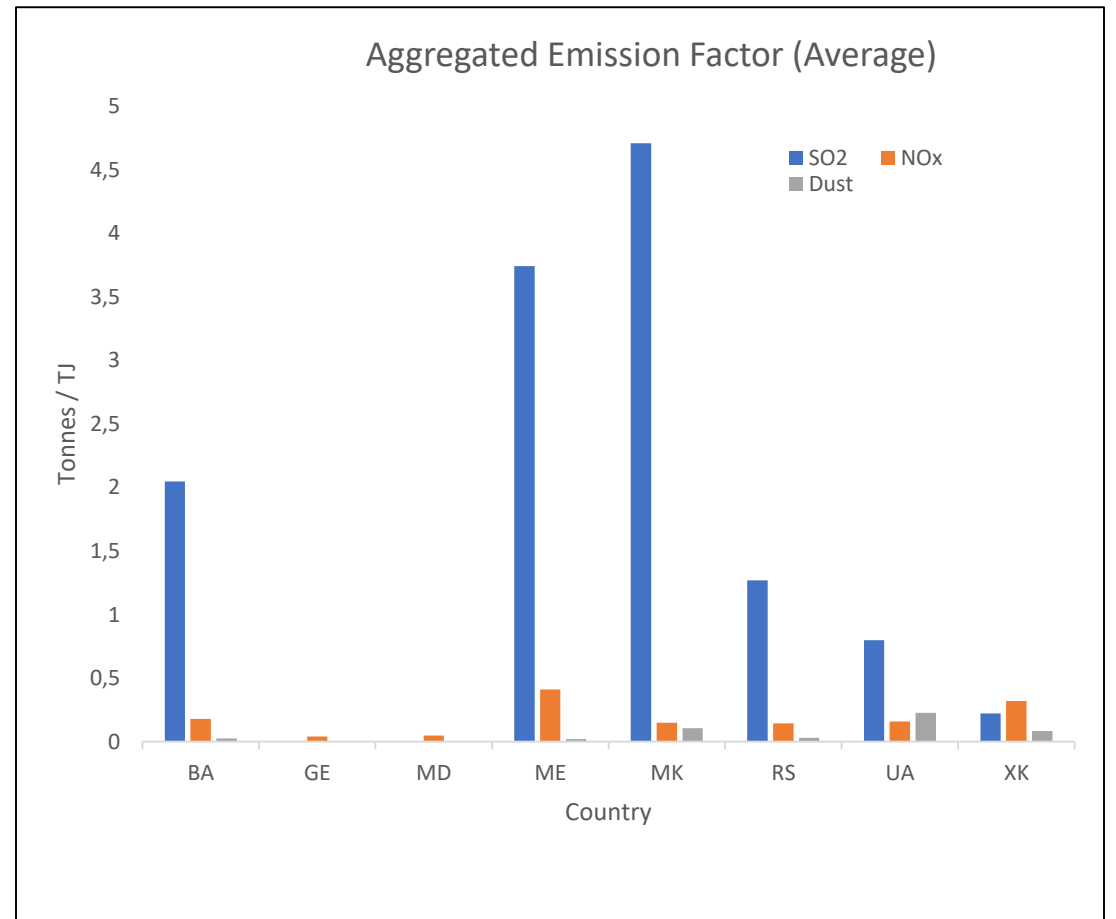
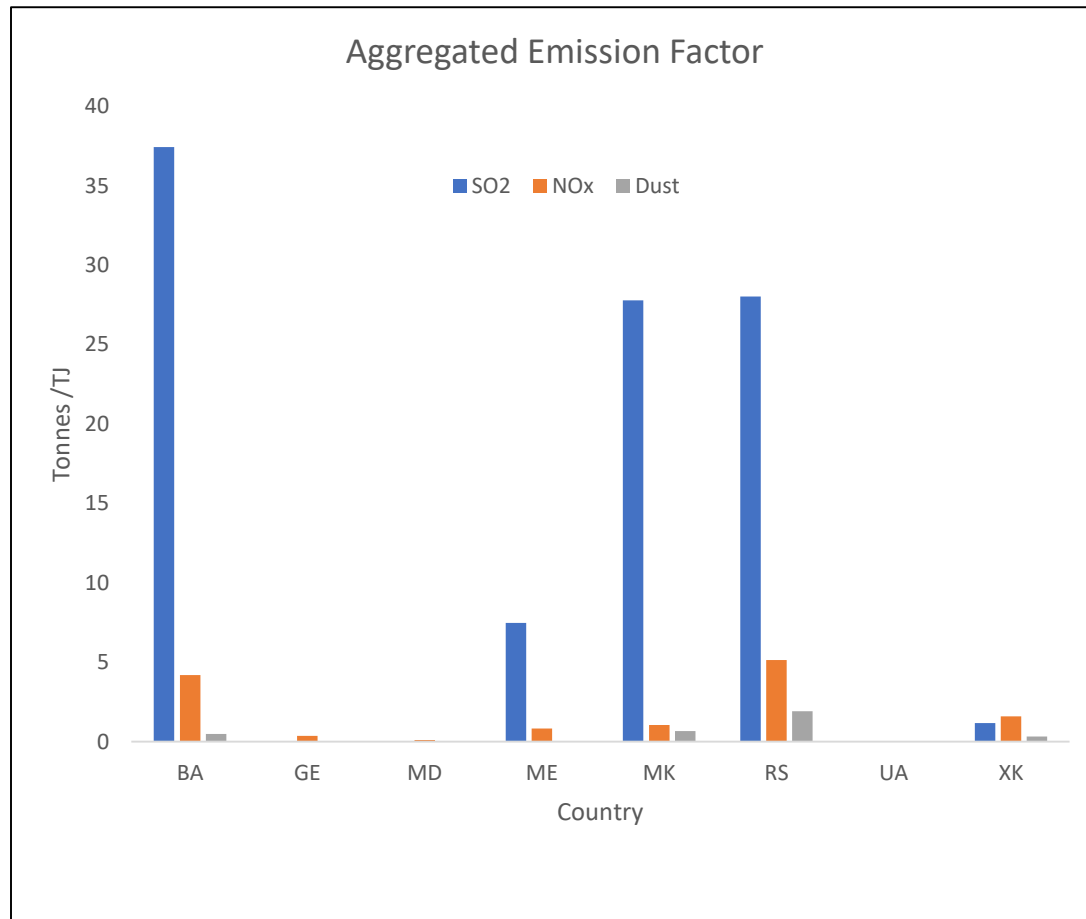


Brief view on reported data

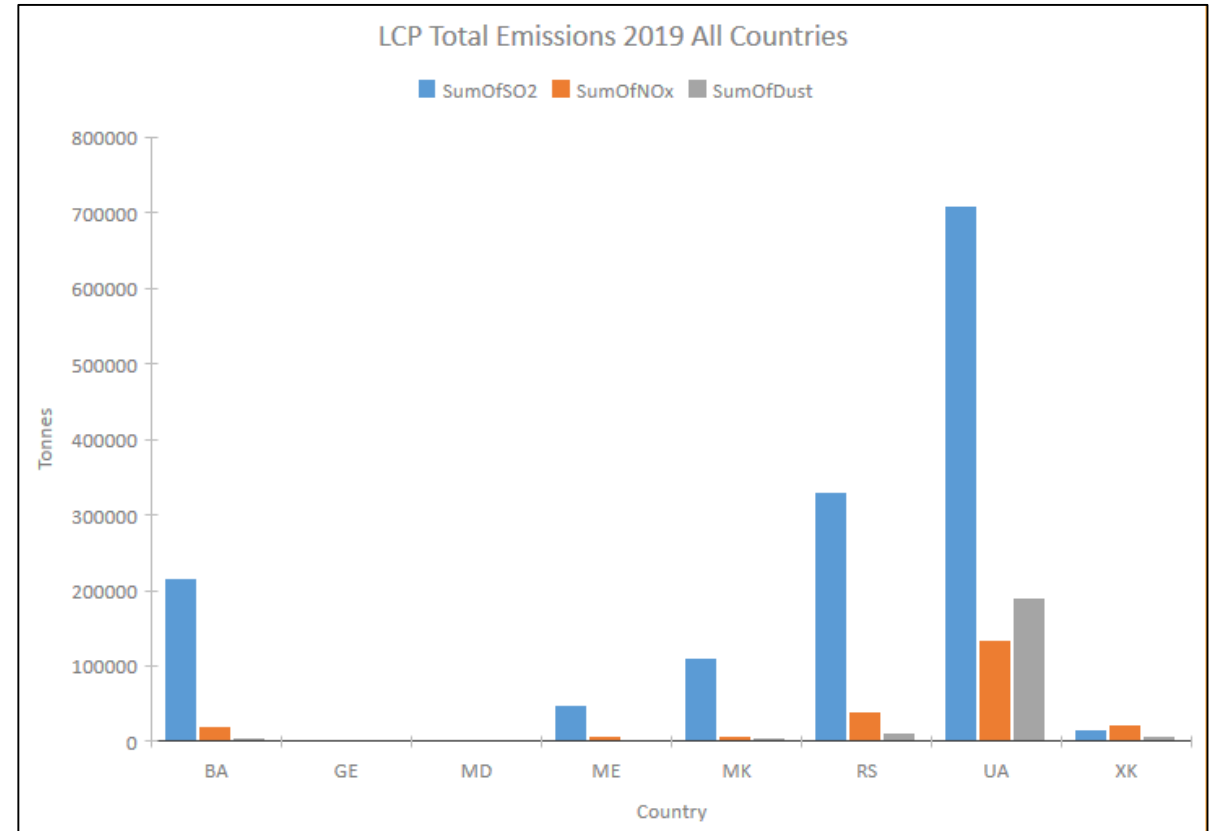
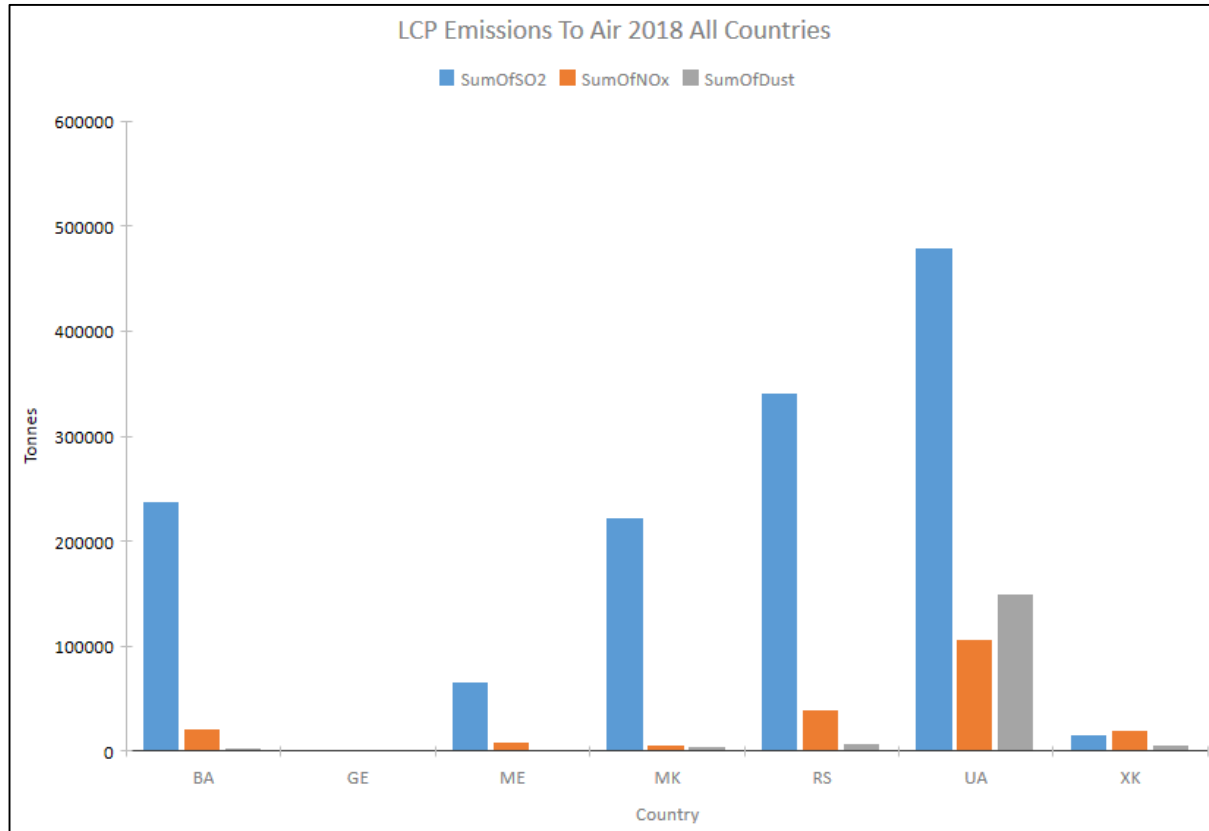
Energy Community Air Emissions Overview



Energy Community Air Emissions Overview (1)



Energy Community Air Emissions Overview (1)



State of play reporting

Consolidation 2018/2019

	Step	Status	Comment
1	Define Database Structure	Complete	Access and Excel versions available
2	Analysis of All Data Submissions	Complete	
3	Data Submission Clarification Questions	Ongoing	Resolved in most cases Ongoing discussions with MD, MK, & UA
4	Metadata Document	Complete	
5	Entry of Database & Metadata Document onto EEA website	Pending	To be published upon resolution of clarification questions with MD, MK & UA

2020 reporting year

- Templates will be prepared shortly
- Reminder letter in December
- Stronger QA/QC for 2020 reported data
- All correspondence automatically directed to nominated experts

Resources for reporting

When reporting

- Please visit our help page
https://cdr.eionet.europa.eu/help/lcp_ener
- Write to Industrial emission reporting at
industry.helpdesk@eea.europa.eu

How to obtain credentials

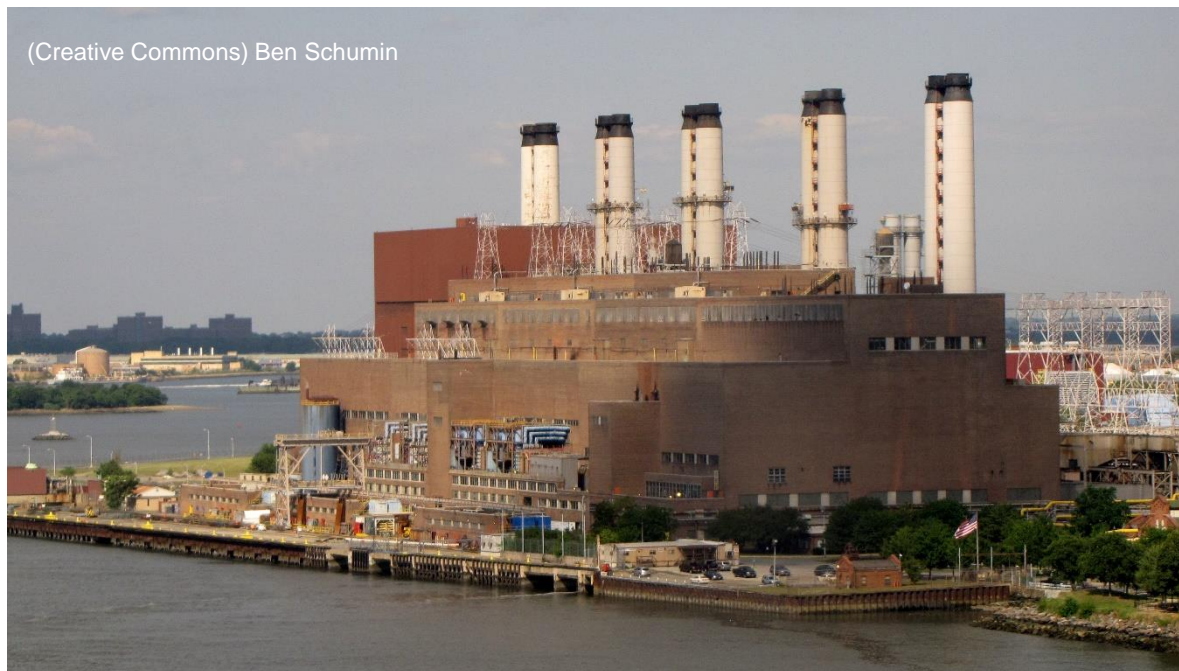
- Official request from the country nominating reporter (email)
- Eionet account and appropriate permissions for the relevant data flow
- All correspondence automatically directed to nominated experts

Reminder: reporting LCP Directive data under the Energy Community Treaty

What are combustion plants?



- LCPs are combustion plants at big scale, firing fuels with capacities greater than 50 MWh
- **Coals, gas, liquid fuels, biomass**



What are NOT combustion plants?

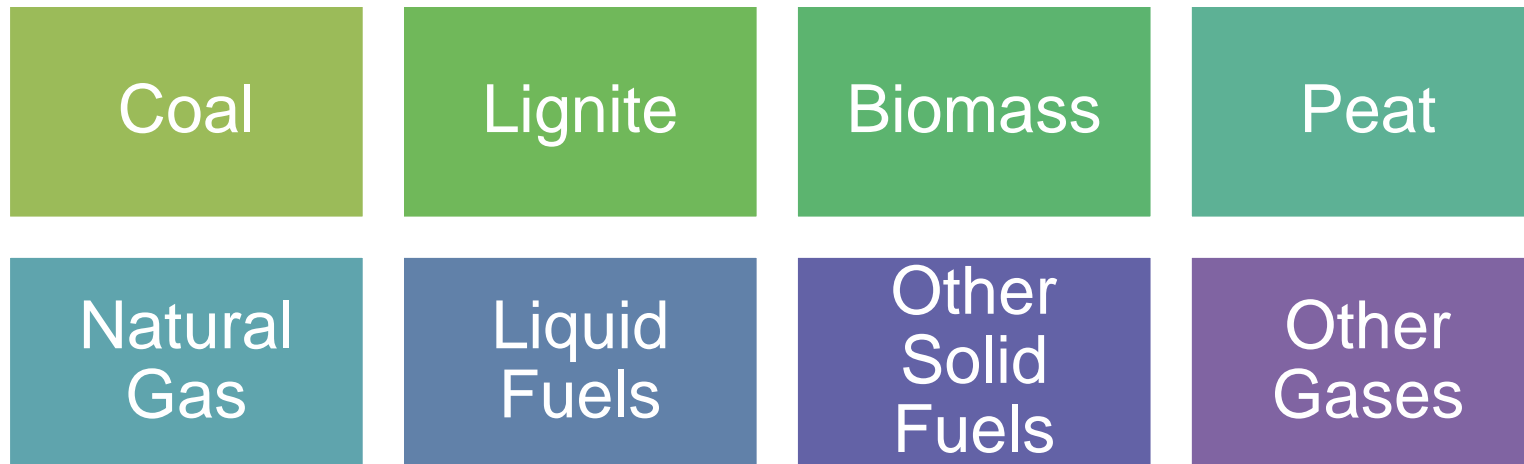
- When using waste partially or totally as an energy input



(Creative Commons) Guillaume Baviere

Reporting Data on Fuels (categories)

- Reporting fuel input for each plant:



- All values are net calorific value

Reporting Data on Fuels (example)

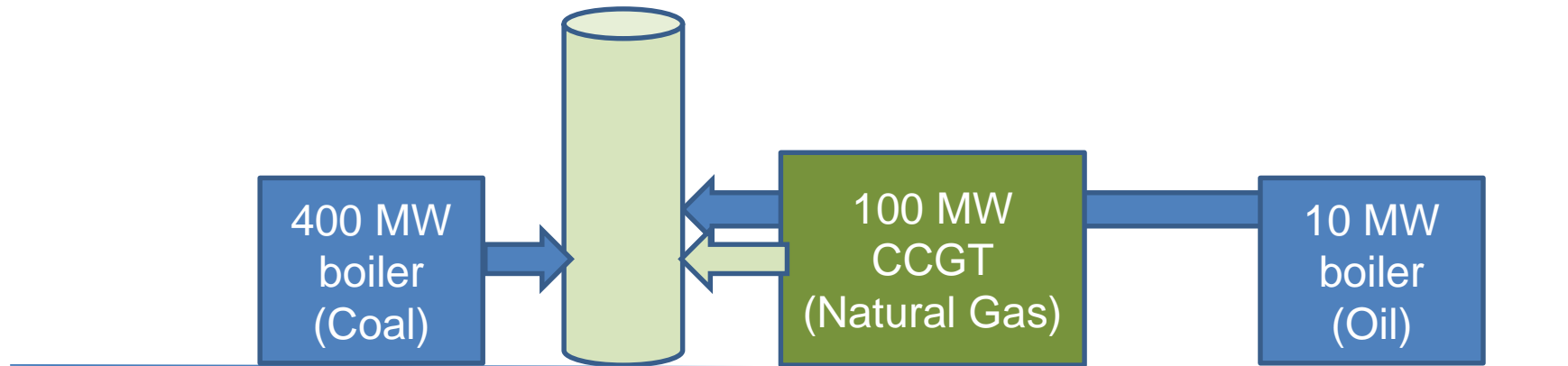
- Report fuel use for each of the 3 units which are part of a single LCP 'plant' even though oil boiler < 15 MW.

Annual Fuel
Inputs by Fuel
Type

Coal: 12,500 TJ

Natural Gas: 2,500 TJ

Oil: 150 TJ



Reporting Data on Operating Hours

- Total operational hours of the plant over a year when any emissions are being generated
- Maximum possible operational hours = 8,760 hours (365 days)
- Generally exclude periods of start-up and shut-down, but must normally have clear definition of start-up and shut-down

Reporting data on pollutant emissions

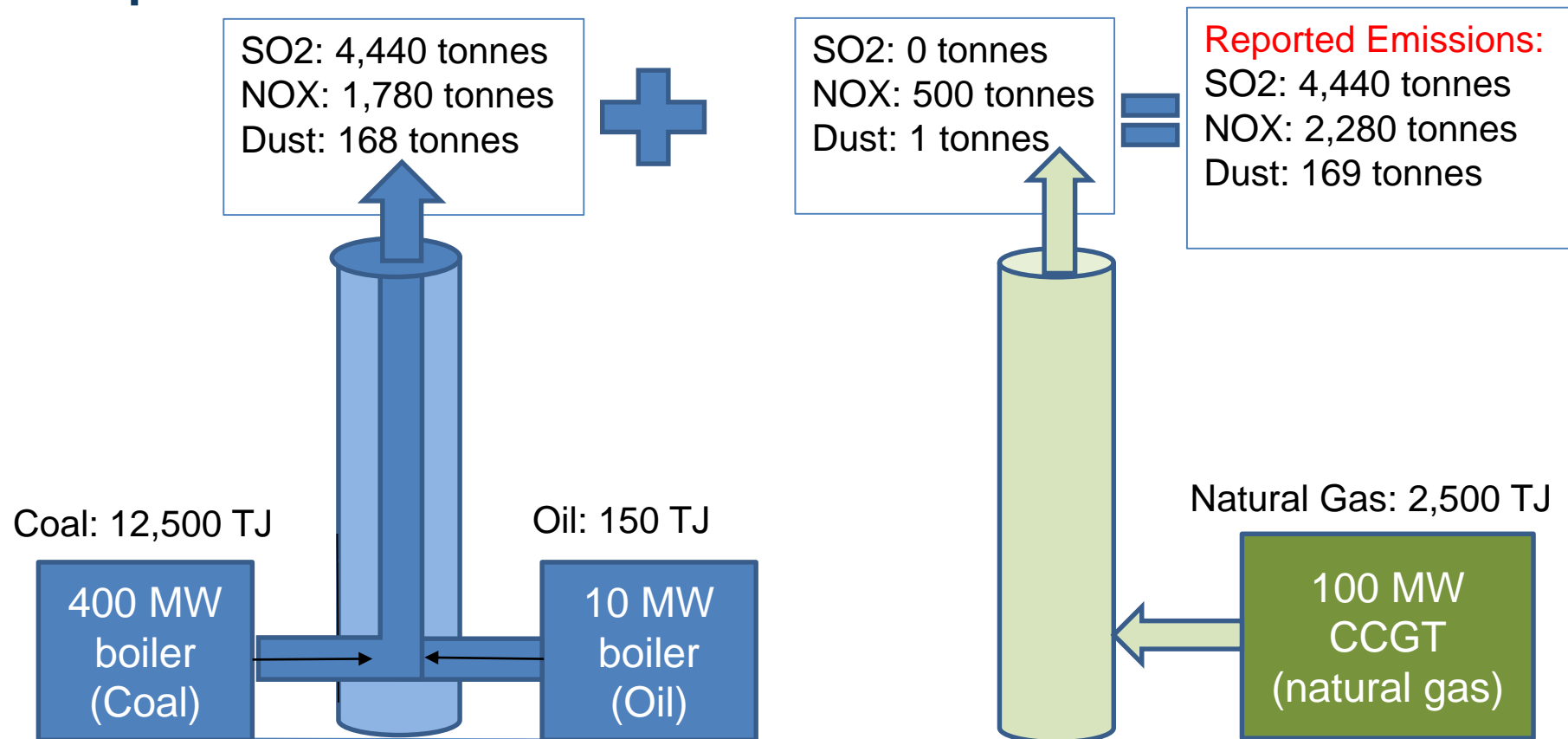
- Sulphur dioxide (Tonnes)
- Oxides of nitrogen (Tonnes)
- Dust (Tonnes)

Reporting Data on Pollutant Emissions

- Reported data typically based on measured emissions data from Automated Measurement Systems (AMS)
- N.B. Must not subtract measurement uncertainty from reported emissions
- LCP Directive requires that CEN standards are applied to measurements, including methods for calibration of AMS

Reporting Data on Emissions

Example: Total Plant Emissions



Other Information to be collected

- Location – Latitude and Longitude
- Reporting country and year
- Is the LCP part of a refinery?
- Details of competent authority
- Total number of reported plants
- Plant Name and address
- Unique plant identification code
- Derogations?

Thank you !
Q&A

