
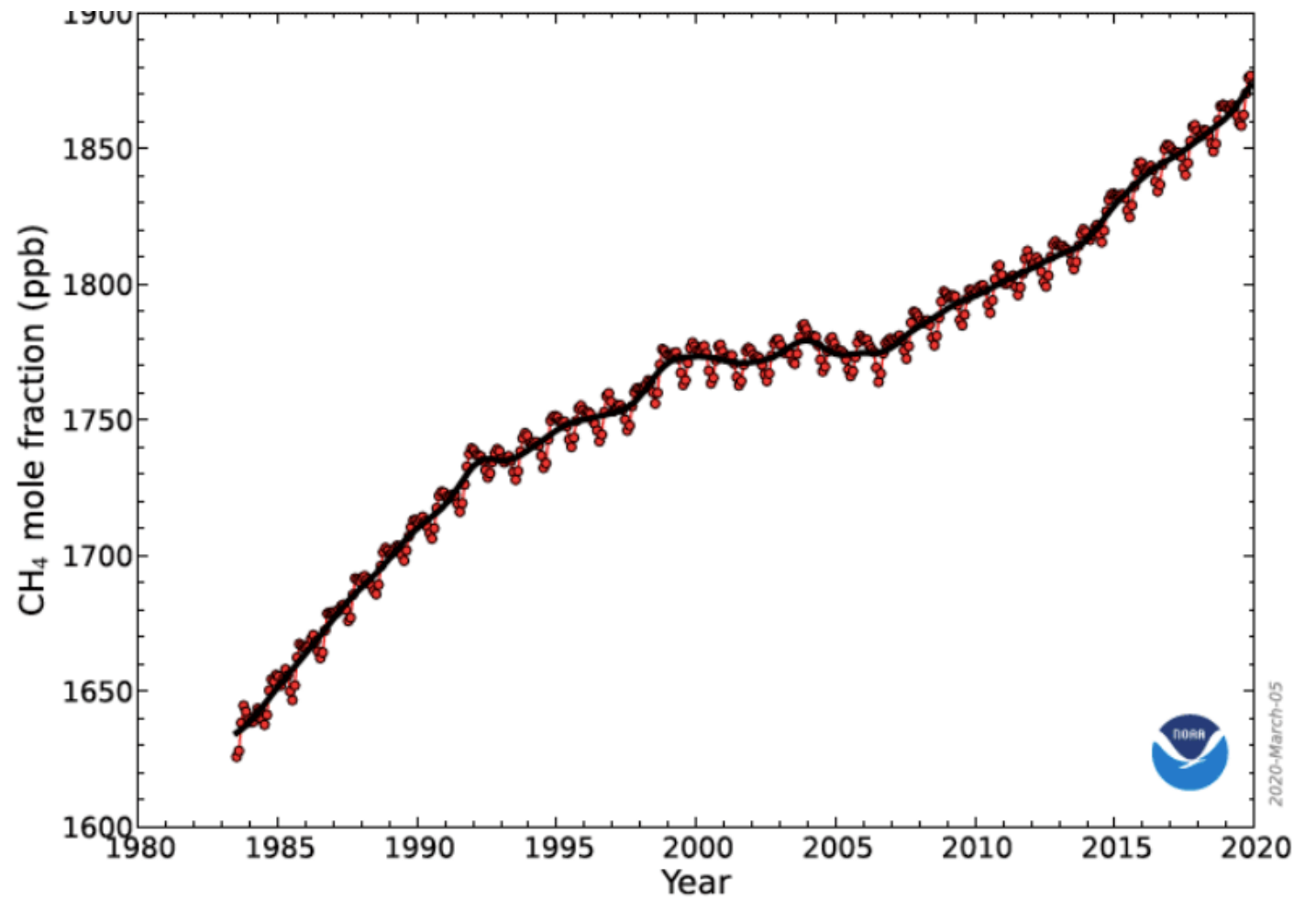


A global problem requires a global solution

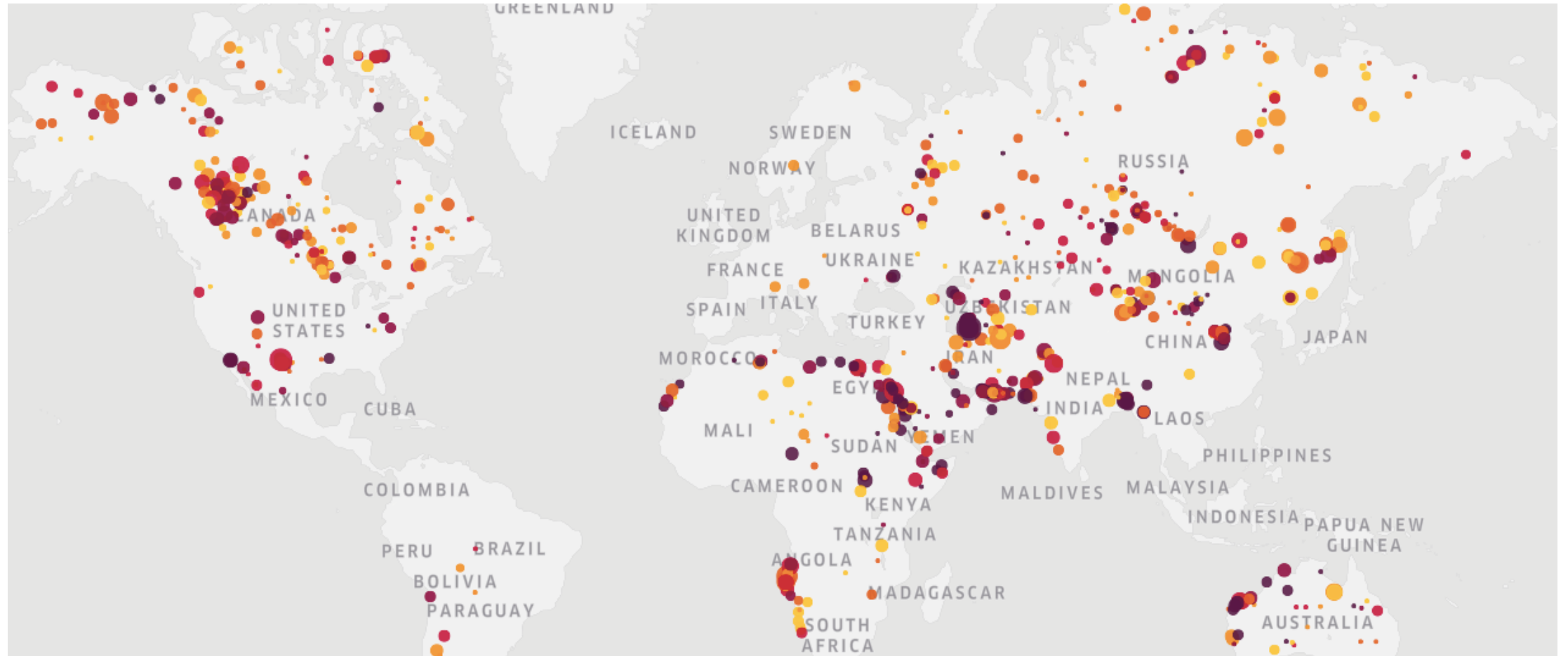


UNEP has established the International Methane Emissions Observatory (IMEO), a data-driven, action-focused Observatory to catalyze reductions in methane emissions globally to levels consistent with the Paris Agreement targets.

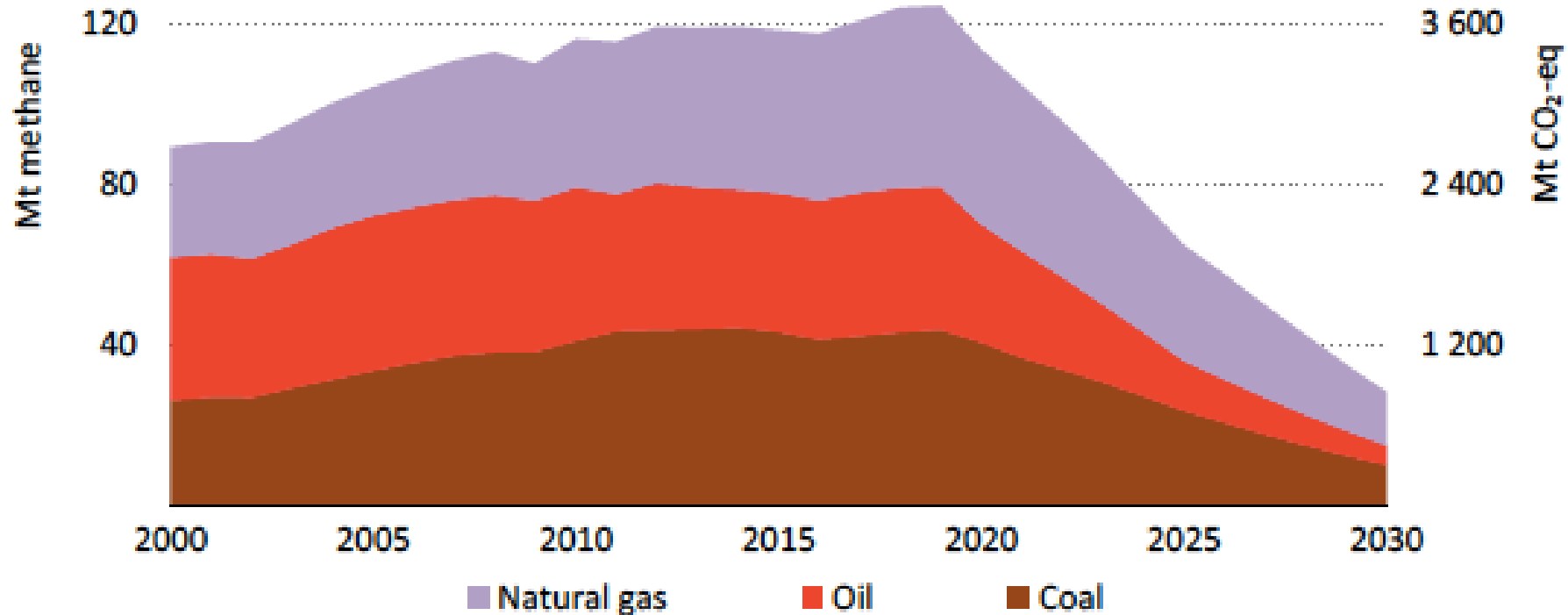
Atmospheric methane level is growing



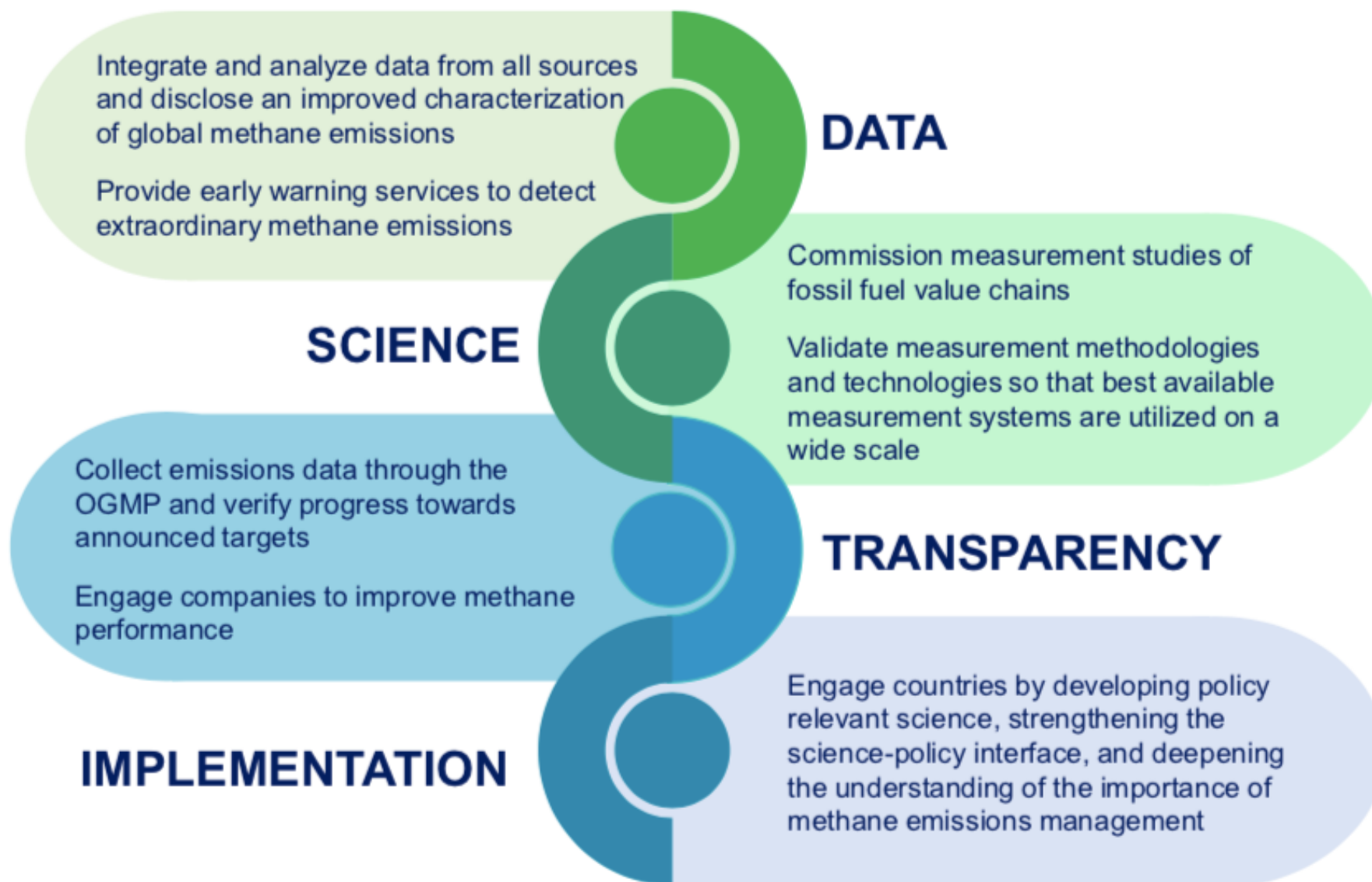
Methane emissions is a global issue



Methane emissions from fossil fuels in the NZE of the IEA

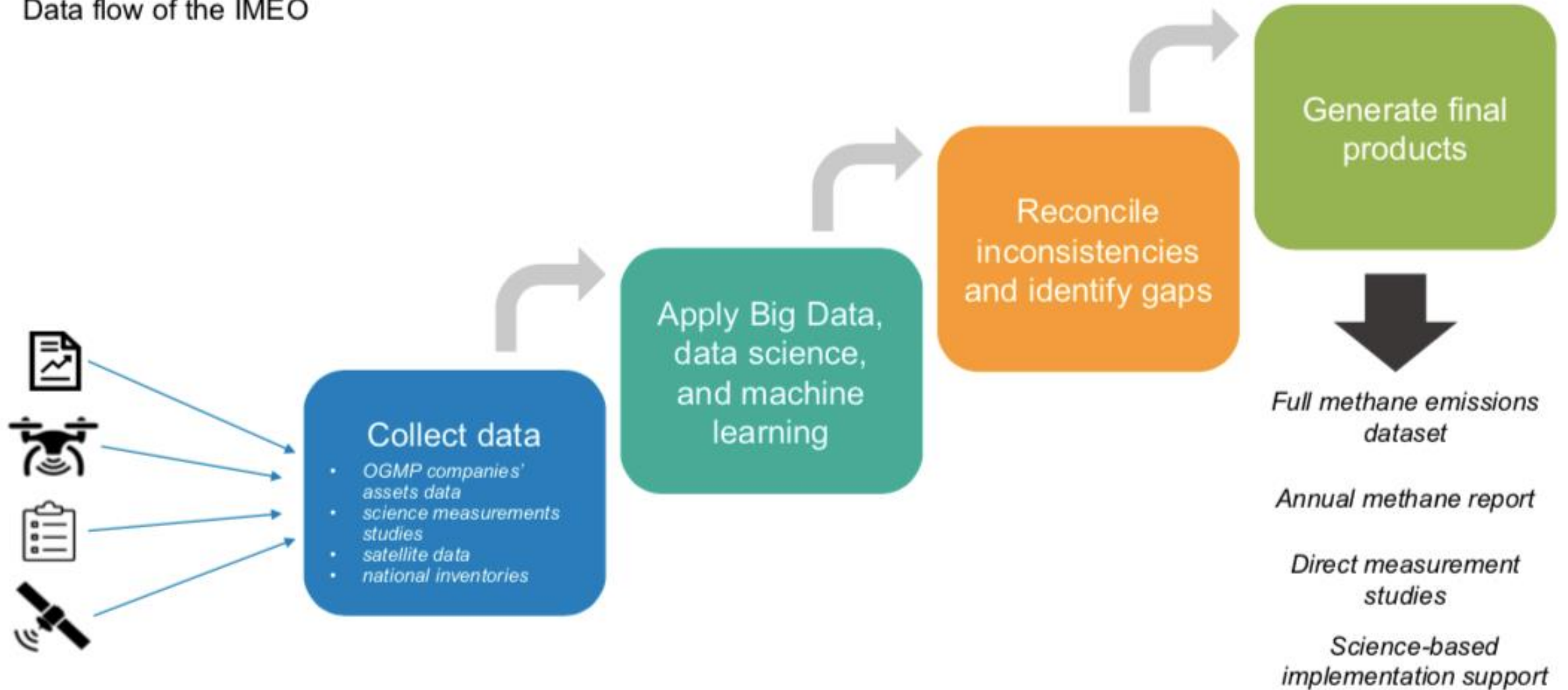


IMEO interconnects activities across the methane ecosystem



How will IMEO answer the methane emissions data problem?

Data flow of the IMEO



Governance of IMEO

