

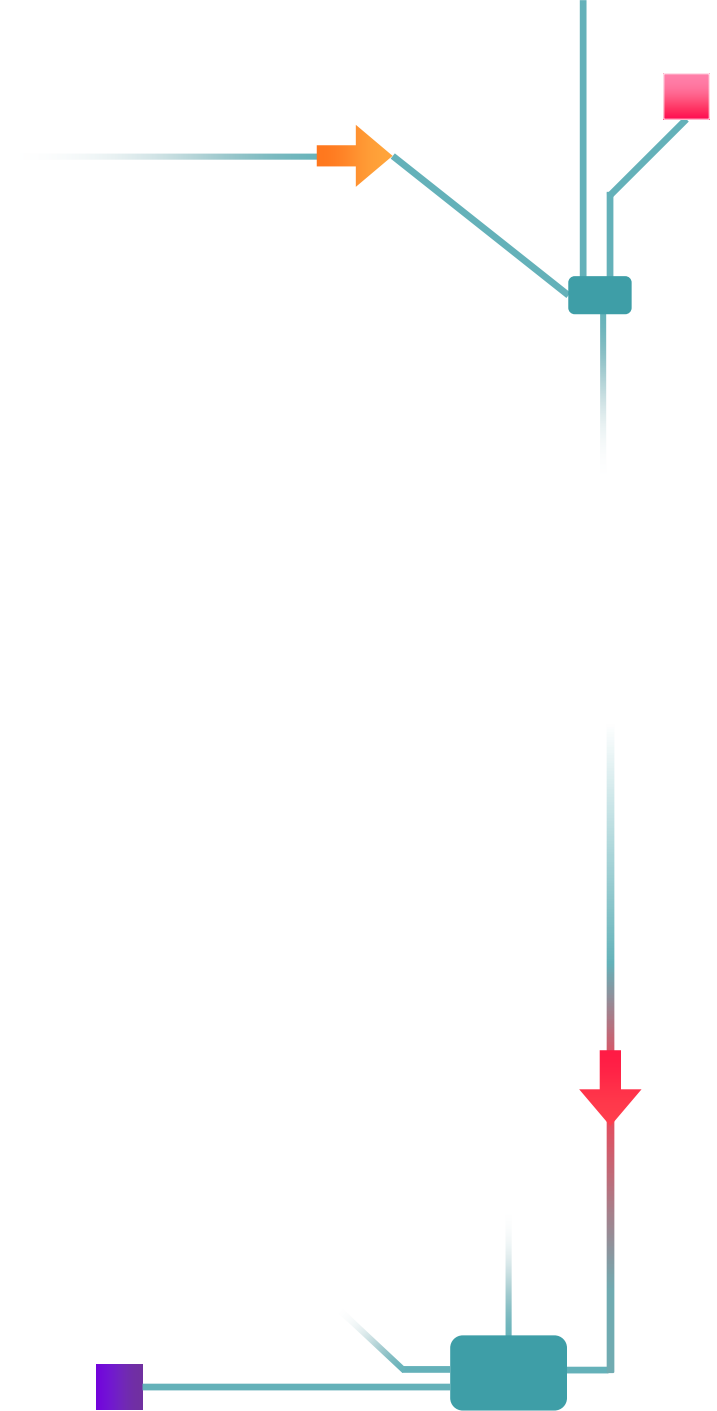


## ENTSOG 12<sup>th</sup> Transparency Workshop

appygas – the gas market made  
easy

Caroline Aumeran – Head of Product

Vienna 28.11.2018



# Current State of Affairs



Wouldn't you say that working in the gas industry sometimes feels like you're banging against the wall?

# We have good news for office walls and heads!

Nov 2016



Sept 2017



Feb 2018



Nov 2018



The idea was born



Test of prototype on the market



Start of IT development



Product Launch at E-World



200 companies registered and customers in London, Paris, Geneva, Germany...

A 4-month high-speed development and launch only made possible thanks to ENTSOG's public and reliable data





1. Appygas in a nutshell

# Our solution to make the gas market easy to understand



## FLOWS MAP

Grasp and analyse near-realtime data quickly and work more effectively and efficiently



## ROUTE CALCULATOR

Identify trading opportunities easily and react to the spreads more swiftly and efficiently



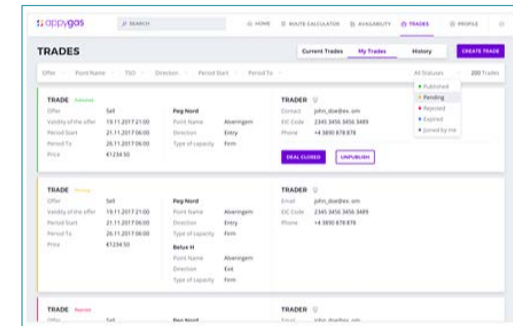
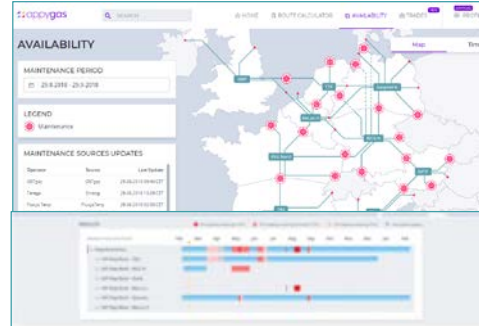
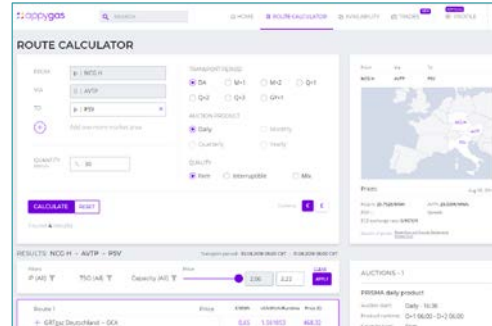
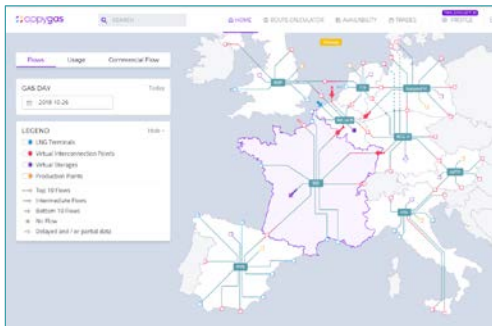
## AVAILABILITY

Anticipate the maintenance and take it into account when making trade decisions



## TRADES

Boost your trades on the secondary market by getting in touch easily with other gas market players



as a  
source



as a  
source

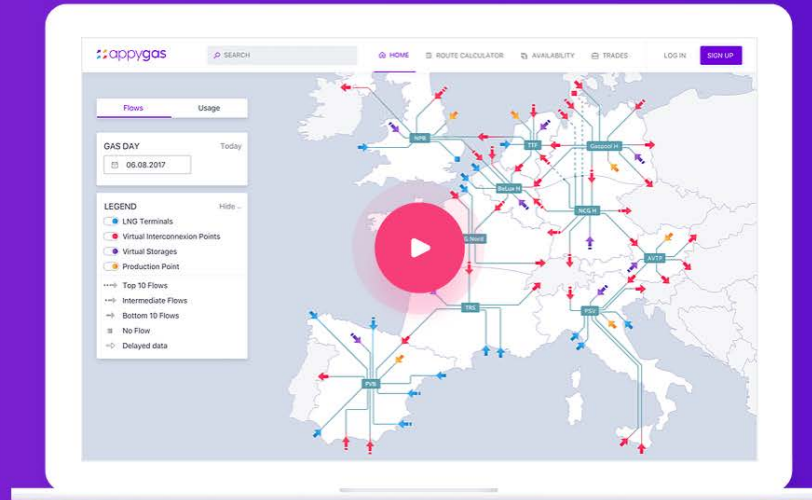


# Video


## THE GAS MARKET MADE EASY


The platform which provides you  
with all relevant European gas  
market data.

Try it for Free



# Added value for shippers and traders



  
FOR TRADERS  
Work more efficiently

Get **all fundamentals** at a glance

- don't miss a trade opportunity through better and faster market understanding and appygas alerts



  
FOR PORTFOLIO MANAGERS  
Optimize your portfolio

Improve your **booking strategy**

- improve your booking strategy taking into account all parameters (exact fee, prisma auctions analysis, maintenance monitoring...)



  
FOR BUSINESS ANALYSTS  
Deliver pertinent analysis to the team

Share **pertinent analysis** with the team

- better history analysis and forecast through accurate, reliable, aggregated and physical data, anytime



2. Deep-dive into our modules



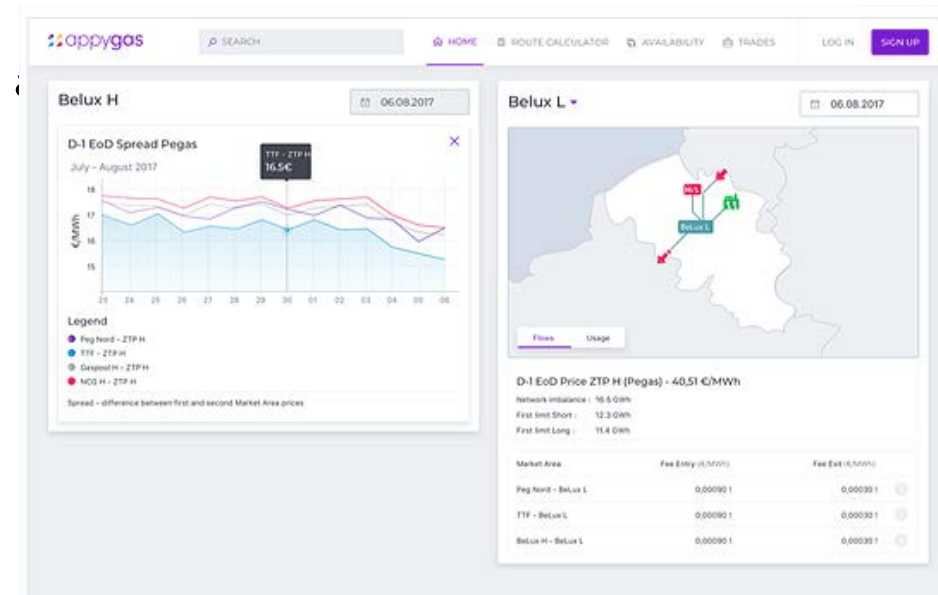
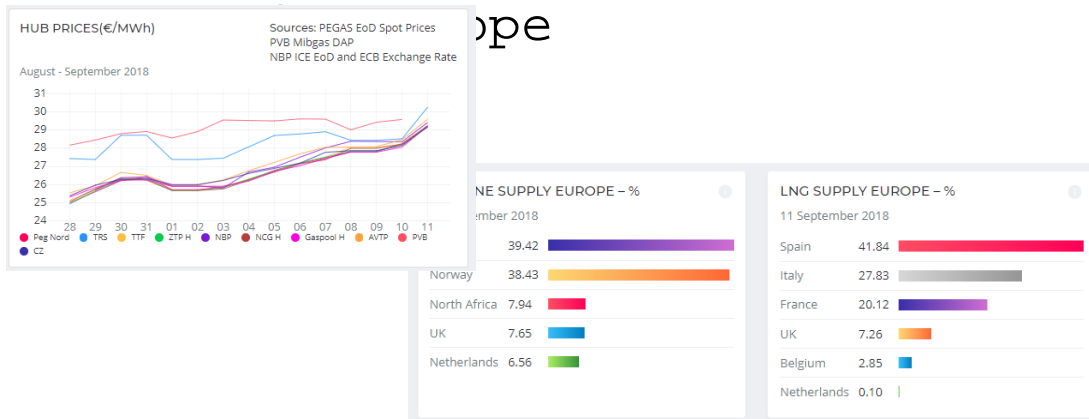
# Flows Map: get the big picture



## FLOWS MAP

Grasp and analyse near-realtime data quickly and work more effectively and efficiently

- 9 market areas covered: now with Gaspool, AVTP and PSV
- near real-time data for VIP, storages, production points and LNG terminals, from the market area to the physical level
- widgets with spot prices, pipeline



# Route Calculator: improve your booking strategy



## ROUTE CALCULATOR

Identify trading opportunities easily and react to the spreads more swiftly and efficiently

- get all alternative routes from A to B
- filter the results with your own criteria
- compare spread and transport
- display last PRISMA auction results
- never miss an auction again

The screenshot displays the 'ROUTE CALCULATOR' interface. The search parameters are: FROM: NCG H, VIA: AVTP, TO: PSV. The transport period is set to M-2. The auction product is Monthly, and the quality is Firm. The results section shows a table for Route 1 (Bayernets - GCA) with columns for IP's, TSO, Capacity, PriceType, Price, €/MWh, €/MWh/RunTime, and Price (€). The table lists several TSOs and their respective prices. The auction information section shows the PRISMA monthly product with details on auction start, product runtime, and capacity type.

Route 1	Price	€/MWh	€/MWh/RunTime	Price (€)
Bayernets - GCA	0.19	13.899120	138.99	
IP's				
Überackern2	Bayernets	BDK	Reserve Price 0.01 0.553300	5.55
			Extra Terms 0.03 2.126220	21.26
Überackern SUDAL	GCA	FZX	Reserve Price 0.16 11.217600	112.18
PRISMA			Total Subroute Price 0.19 13.899120	138.99
TAG - SNAM	1.28	91.980285	919.80	
IP's				

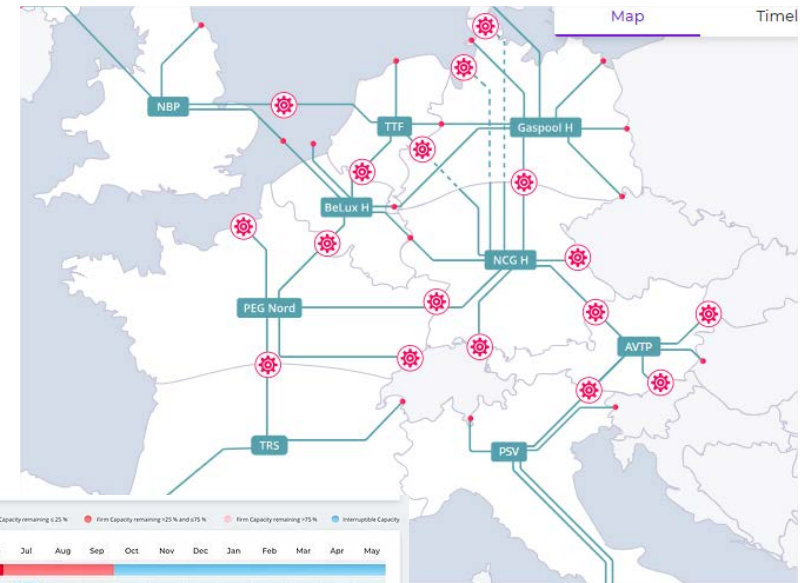
# Availability: upcoming maintenance, anyt



## AVAILABILITY

Anticipate the maintenance and take it into account when making trade decisions

- monitor the upcoming works on your portfolio
- check the usage of your network points with the Flows Map to anticipate congestion



# Trades: boost the secondary market



## TRADES

Boost your trades on the secondary market by getting in touch easily with other gas market players

- create an offer to sell or buy transport capacities
- publish your offer
- stay anonymous or not
- get in touch with other gas market players
- close the deal on PRISMA

TRADES				Current Trades	My Trades	History	CREATE TRADE		
<small>Please note that all published trades are non-binding. appygas merely serves as a means of communication for market participants. Pursuant to Section 12 (2) GasNZV, any assignment of capacity or transfer of use will be exclusively performed via PRISMA.</small>									
Offer **	Point Name **	TSO **	Start Day **	End Day **	All Directions			All Statuses	2 Trades
<b>TRADE</b> <small>Rejected</small>	Offer: Sell	TSO: GRTD	Point Name: Medelshelm	Direction: Exit	<b>TRADER</b>			Email: maryline@appygas.com	EIC Code: 2120000000001208
	Validity of the offer: 24.04.2018 06:00		Type of capacity: Interruptible		<b>Reason of rejection:</b>			empty	
	Start Day: 05.05.2018 06:00		TSO: GRT	Point Name: Oberallbach				<a href="#">EDIT THIS TRADE</a>	
	End Day: 11.07.2018 06:00		Direction: Firm	Type of capacity: Firm					
	Price: €/MWh 10								
	Quantity (MWh/h): 30								
	Type of trade: Transfer of Use								
<b>TRADE</b> <small>Rejected</small>	Offer: Sell	TSO: GRT	Point Name: medelsh	Direction: Exit	<b>TRADER</b>			Email: maryline@appygas.com	EIC Code: 2120000000001208
	Validity of the offer: 21.04.2018 06:00		Type of capacity: Firm		<b>Reason of rejection:</b>			empty	
	Start Day: 31.05.2018 06:00							<a href="#">EDIT THIS TRADE</a>	
	End Day: 06.06.2018 06:00								
	Price: €/MWh 12								
	Quantity (MWh/h): 30								
	Type of trade: Transfer of Use								

## Our solution is based on reliable data

our data are

accurate

harmonized

reliable

near real-time

transparent

at your fingertips

100,000 data crawled per day

more than 40 sources

up to 4 sources per variable

priorities of sources according to the best quality

## Usage of ENTSOG TP API as a data source

- Fundamental source for our Flows Map and Maintenance modules
- 120 queries per run
- New run every 3 hours, soon hourly
- 12,000 raw data called per run
- Primary source for 2 out of 9 market areas (TTF and GPL) and partially for the maintenance module
- Second or third source for all data of these modules



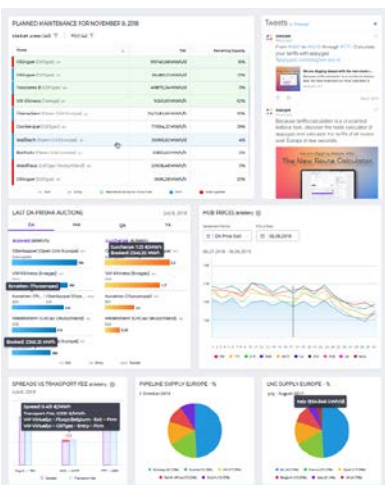


3. Stay tuned.. more coming soon!

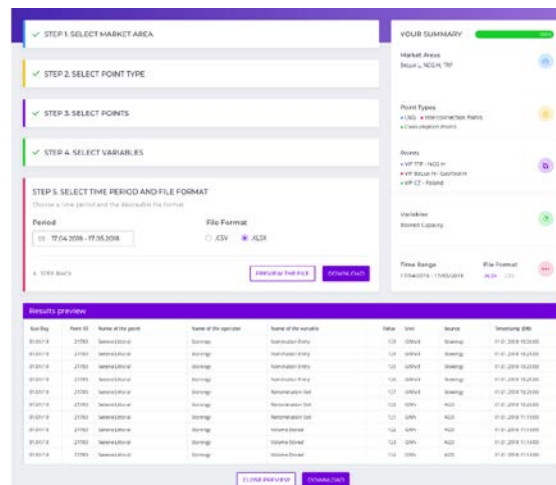
...to be continued in  
2019

## Next releases

Dashboard



API and download



Strengthen the base; enhance data quality and processing

Extend the scope: geographical (Eastern Europe) and data coverage for storages & LNG

Scale up business model with and for customers





Try it for free!

register now at

<https://my.appygas.com/auth/signup>

and use appygas for free during  
one month



Thank you  
!

[appygas.com](http://appygas.com)