



BCSDH 2022

TIME TO TRANSFORM

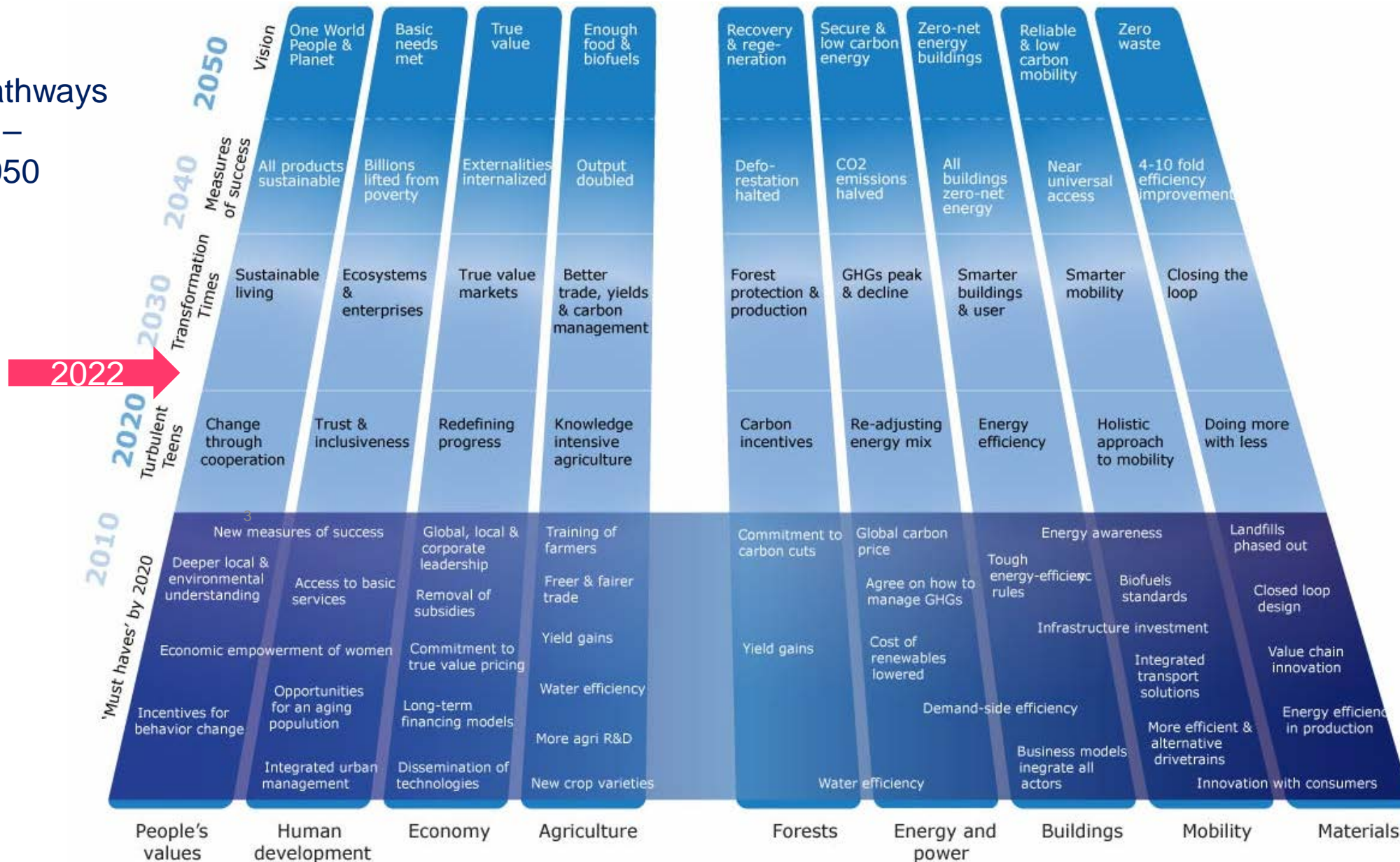
**9+ BILLION PEOPLE
LIVING WELL
WITHIN PLANETARY
BOUNDARIES**



VISION 2050
TIME TO
**TRANS
FORM**

TIME TO TRANSFORM

Original pathways from 2010 – VISION 2050



TIME TO TRANSFORM

VISION 2050 PATHWAYS - RENEWED IN 2021



ENERGY

RELIABLE & AFFORDABLE ENERGY FOR ALL

DEMAND FOR AND DELIVERY OF NET ZERO CARBON ENERGY

AN EFFICIENT ELECTRIC ENERGY SYSTEM

BUILT ON THE FOUNDATIONS OF A JUST AND FAIR TRANSITION



TRANSPORTATION & MOBILITY

MOBILITY ENABLES OPPORTUNITY FOR ALL

HEALTH AND SAFETY ARE PARAMOUNT

TRANSPORTATION IS CLEAN & EFFICIENT

TRANSPORTATION SYSTEMS RESPECT PEOPLE & COMMUNITIES



LIVING SPACE

LIVING SPACES PROMOTE HEALTH & WELLBEING

AFFORDABLE HOUSING AND COMMUNITIES THAT WORK FOR ALL

A NET-ZERO CARBON, RESILIENT, ADAPTABLE AND REGENERATIVE BUILT ENVIRONMENT

LIVING SPACES THAT HARNESS THE POTENTIAL OF RECYCLED AND RENEWABLE MATERIALS



PRODUCTS AND MATERIALS

THE ECONOMY IS CIRCULAR

PRODUCTS ARE CIRCULAR BY DESIGN

PRODUCT LIFECYCLES MAXIMIZE VALUE & PROTECT NATURE

THE CIRCULAR ECONOMY LEAVES NO ONE BEHIND

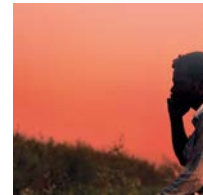


FINANCIAL PRODUCTS AND SERVICES

THE FINANCIAL SYSTEM RECOGNIZES THE VALUE OF SOCIAL AND ENVIRONMENTAL OUTCOMES ALONGSIDE FINANCIAL PERFORMANCE

FINANCIAL CAPITAL ALLOCATION ENABLES SUSTAINABLE DEVELOPMENT

THE FINANCIAL SYSTEM HAS ACCESS TO COMPREHENSIVE AND COMPARABLE DATA ON CORPORATE SUSTAINABILITY



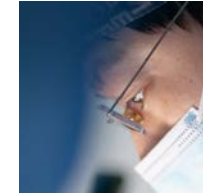
CONNECTIVITY

CONNECTIVITY EMPOWERS EVERYONE

DATA OPTIMIZES PERFORMANCE AND EFFICIENCY

SUSTAINABLE DEVELOPMENT CAN BE TRACKED AND MANAGED

CONNECTIVITY RESPECTS PEOPLE AND THE ENVIRONMENT



HEALTH AND WELLBEING

PEOPLE LIVE HEALTHY LIVES

HEALTH IS PROMOTED AND PROTECTED

EVERYONE HAS ACCESS TO ROBUST RESILIENT & SUSTAINABLE HEALTHCARE SERVICES

WORKPLACES PROMOTE WELLBEING



WATER AND SANITATION

WATER & SANITATION ARE AVAILABLE FOR ALL

WATER IS APPROPRIATELY VALUED

WATER AND SANITATION RESOURCES ARE MANAGED IN A CIRCULAR FASHION

WATER QUALITY AND ECOSYSTEMS ARE PROTECTED



FOOD

EVERYONE HAS ACCESS TO NUTRITIOUS AND AFFORDABLE FOOD

SUSTAINABLE PRODUCTION RESTORES AND SAFEGUARDS NATURE

FOOD IS CONSUMED SUSTAINABLY

VALUE CHAINS ARE PROSPEROUS, EQUITABLE AND FREE FROM HUMAN RIGHTS ABUSES



VISION 2050 ORIGINAL PATHWAYS



ENERGY & POWER

SECURE AND LOW CARBON ENERGY



MOBILITY

RELIABLE AND LOW CARBON MOBILITY



BUILDINGS

ZERO-NET ENERGY BUILDINGS



MATERIALS

ZERO WASTE



WORKS FOR EVERYONE

ECONOMY

TRUE VALUE



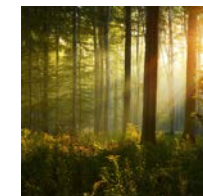
PEOPLE'S VALUE

ONE WORLD PEOPLE & PLANET



HUMAN DEVELOPMENT

BASIC NEEDS MET



FOREST

RECOVERY AND REGENERATION



AGRICULTURE

ENOUGH FOOD AND BIOFUELS

URGENT NEED FOR ACTION

Climate emergency

1.18°C increase already



Biodiversity loss

Wildlife populations shrank by 68% already

One million species to extinction by 2050



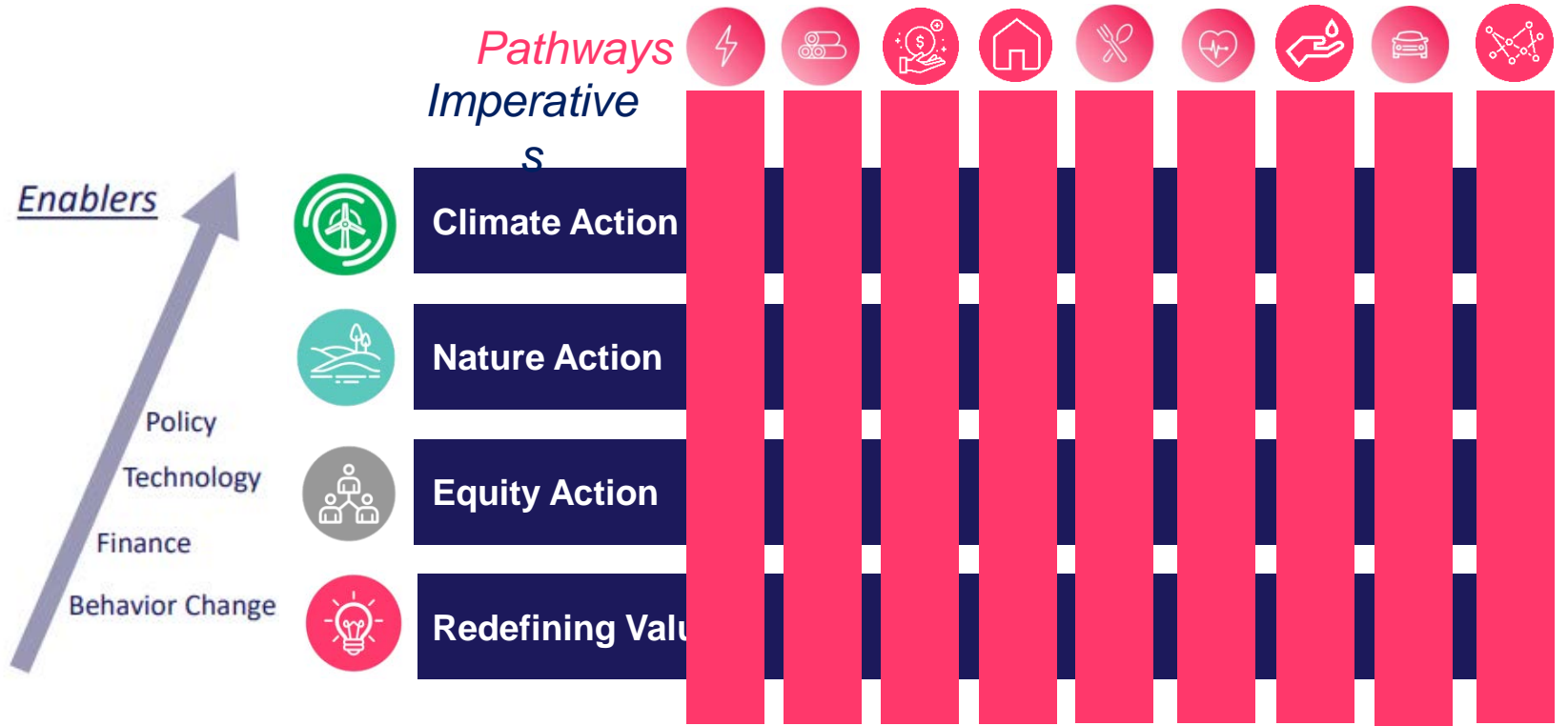
Rising inequality

The richest **1%** of the global population has captured **27%** of economic gains, while the poorest **50%** has captured only **12%**.



TIME TO TRANSFORM

It is time to join forces and take the lead in action.



2020

Time to Transform 2030



2030

VISION 2050



2050

TIME TO TRANSFORM

It is time to shift the focus to action and encourage collaboration.



TIME TO TRANSFORM 2030

How to become a sustainable city?

- **Mobility** - easy to get around (without cars)
- **Sustainable, renewable energy** based systems
- **Buildings** - green architecture, circularity, energy+
- **Green spaces**, parks, roofgardens
- **Water conservation** and **waste management**
- **Urban farming**

15-Minute City concept by Carlos Moreno wins Obel Award 2021



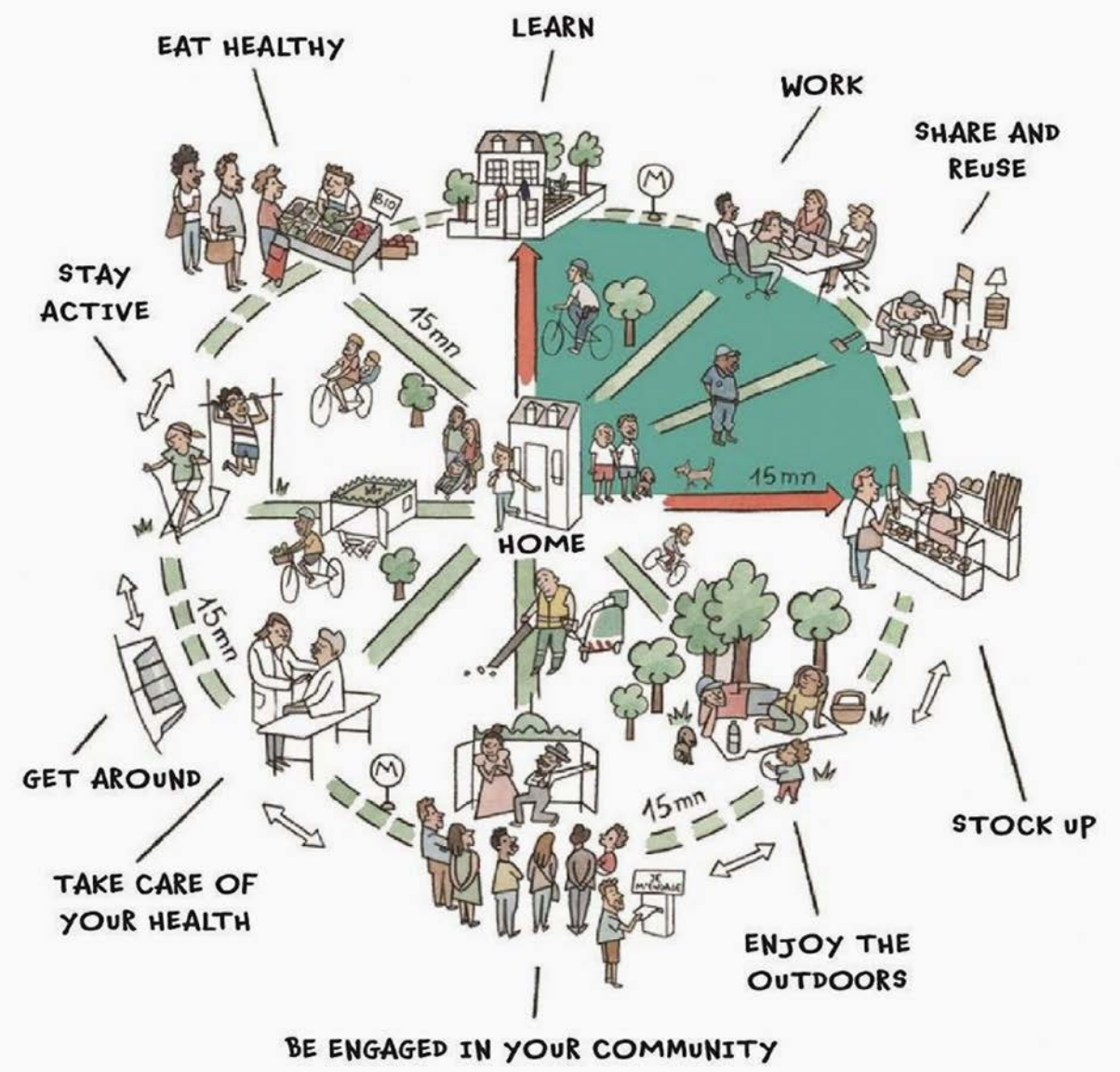
Lizzie Crook | 26 October 2021 | 3 comments

A concept for a city in which citizens can access their daily necessities by foot or bike within 15 minutes has won the Obel Award for 2021.

Aptly named the 15-Minute City, the urban planning model was developed by Fre Colombian scientist Carlos Moreno to help tackle car hegemony and create more sustainable human-centric urban environments.



THE 15-MINUTE PARIS

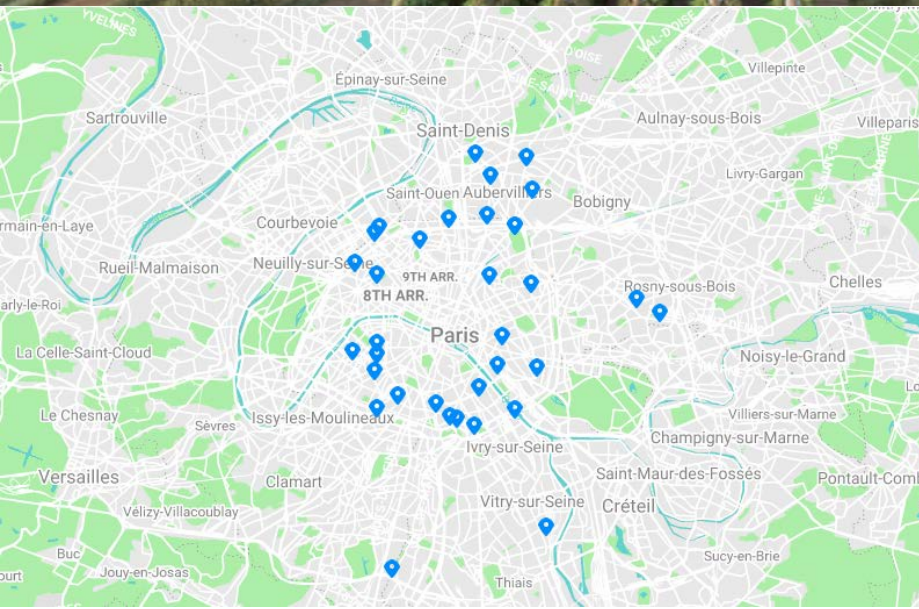




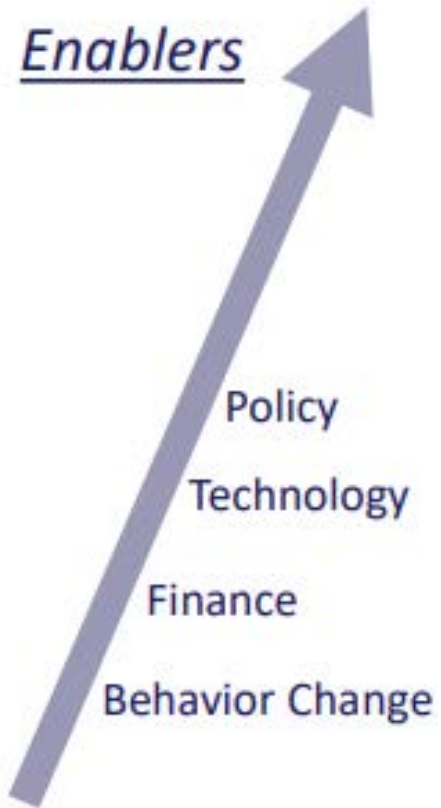
nih.la.com

ZT 396





Key succes factors:



- Stakeholder collaboration & involvement
 - Understand necessary policies
 - Involve new technologies
 - Financing collaborations
 - Public support
- Act as a company:
 - Assessment, longterm strategy, action plan, measure results
- Report on improvement & share best practices

26 game-changing climate initiatives

- WBCSD's [Business Manifesto for Climate Recovery](#) – built around 12 priority actions that businesses and policymakers should prioritize now to halt damaging global heating and begin the process of climate recovery.
- [Market Transformation Levers for a Net Zero Built Environment](#) – co-developed by WBCSD under the umbrella of the Global Alliance for Buildings and Construction (GlobalABC). This work highlights three fundamental actions to drive market transformation along the full value chain of the built environment.
- WGBC Net Zero Building Commitments <https://www.worldgbc.org/thecommitment>
- WBCSD's report [The Business Case for Circular Buildings](#) – showing that the business case for circular buildings is positive if we account for true cost and value on a life-cycle basis.

Thank You.

iren.marta@bcsdh.hu

Membership criteria - Imperatives

Extract from the WBCSD document

Set an ambition to reach Net Zero GHG emissions no later than 2050



Set ambitious goals that contribute to nature/biodiversity recovery by 2050



Declare support for Business and Human Rights and DEI (diversity, equality, inclusion)



Operate at the highest level of transparency

