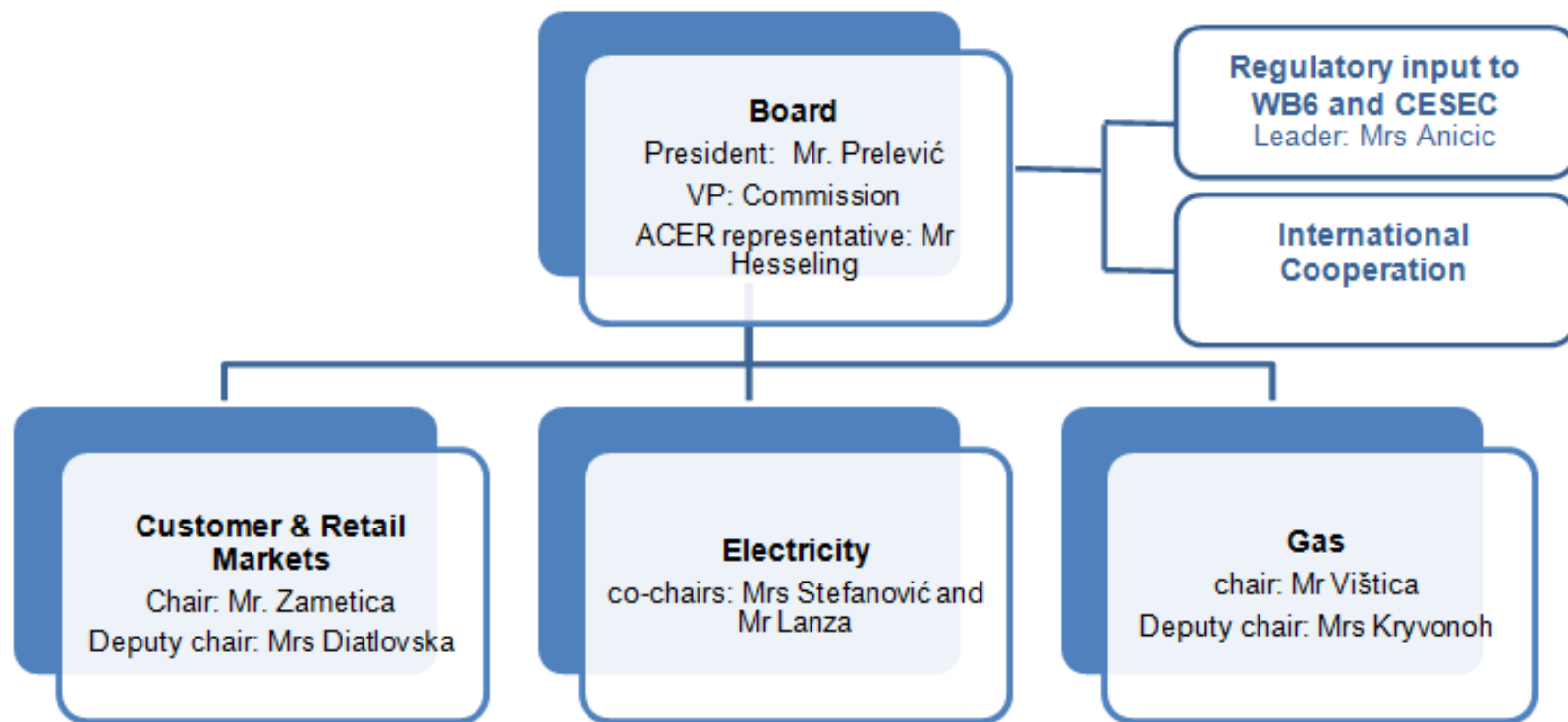


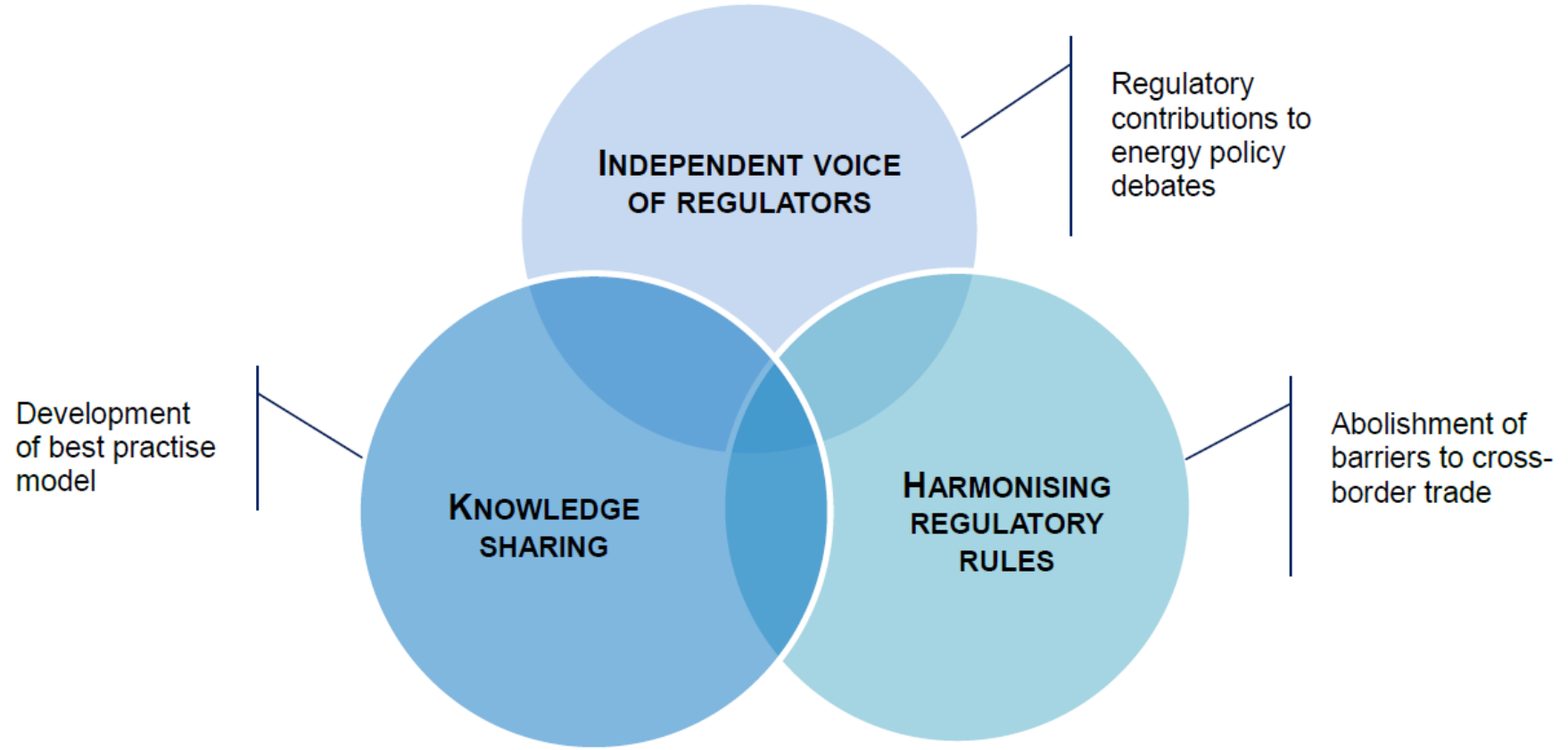
The background is a dark blue image of the Earth from space, with glowing blue energy lines and arcs connecting various points across the globe, particularly concentrated over Europe and the Mediterranean region.

ECRB activities 2016

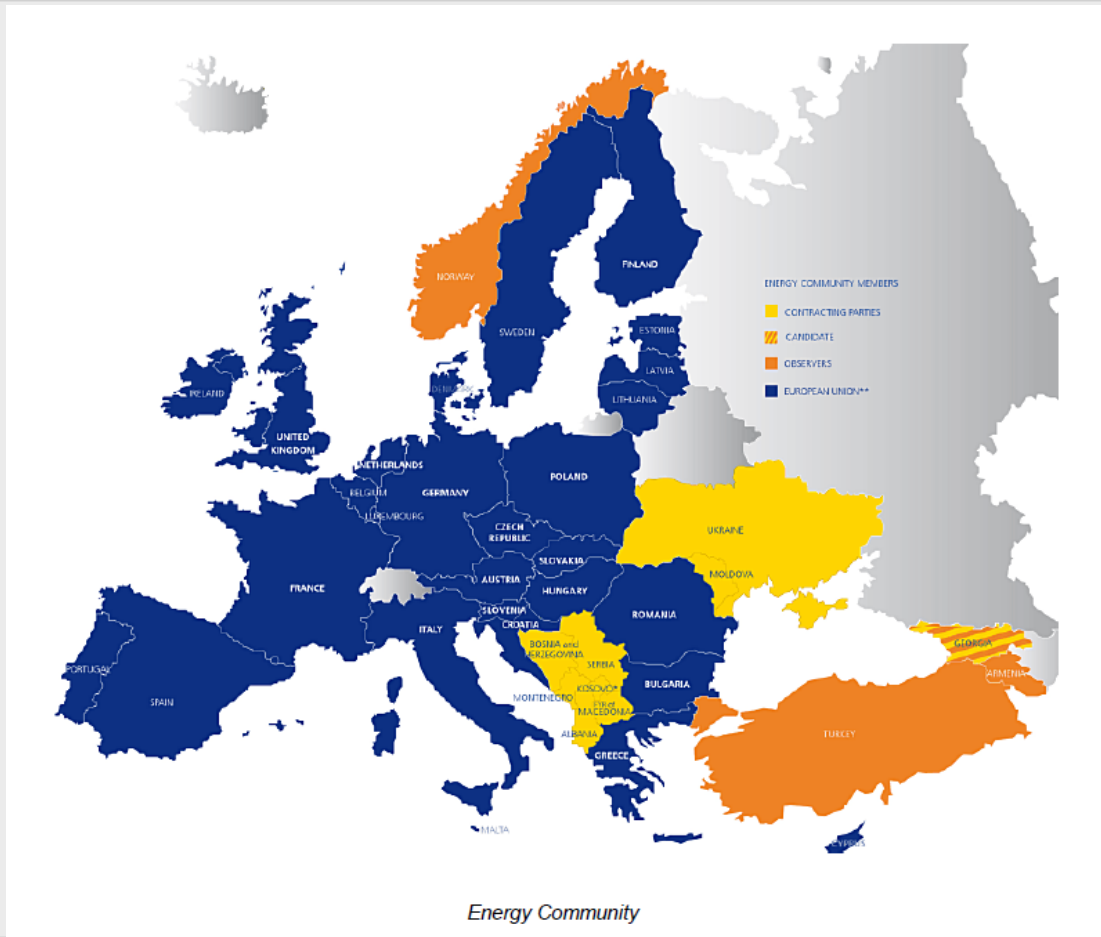
Nina Grall-Edler



Mission and principles



Geographic scope





- **Quality of supply**
 - Joint ECRB CEER report ✓
- **Retail market entry barriers**
 - Entry market requirement overview ✓
 - Template brochure for new entrants
- **ADR**
 - Survey on existing ADR mechanisms and to identify best practise ✓
 - GGP for complaint case classification
 - Template brochure on available ADR tools
- **Retail market functioning**
 - Retail market indicators for the EnC (basis: CEER)
- **Customer awareness**
 - Joint ECRB CEER WS



- **WMO**
 - Quarterly bulletin on major el sector development in the CPs
 - SEE RAP progress monitoring
 - Harmonised regulatory review of SEE CAO auction rules
 - Transparency monitoring (Regulations 714/2009 and 543/2013)
- **Balancing**
 - survey on existing imbalance settlement models in the EnC
 - Follow up on regional el balancing study
- **WM market monitoring**
 - MM report ✓
 - SEE MM Guidelines



- **Interoperability**
 - Compliance with Regulation 2015/703 (link: [GRI SSE pilot project](#))
- **Regulatory treatment of technical and commercial losses (TS | DS | SO)**
- **Tarification**
 - Experience sharing on regulatory accounts



- WB6 | CESEC
- CEER | MEDREG

The background is a satellite-style image of the Earth, showing the continents of Europe and Africa. Overlaid on this is a complex network of glowing blue lines that represent energy or data connections, with many points of convergence and divergence.

Thank you
for your attention!

Nina.grall@energy-community.org